



19151 E Hollow Creek Drive
Parker, CO 80134
COMMUNITY: Stroh Ranch

MLS # 2992484
PRICE \$660,000

Welcome to 19151 E Hollow Creek Dr Parker CO - Stroh Ranch



Single Family



3485 SQFT



5 Beds



3/1 Baths



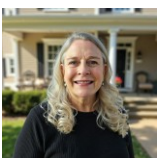
3 Car



0.15 Acre

PROPERTY DETAILS

Welcome to Stroh Ranch! This beautifully decorated home offers 5 spacious bedrooms and a finished basement ideal for game nights or guests. The kitchen features granite countertops and a center island, perfect for family gatherings. Enjoy cozy LVP flooring and a gas fireplace in the living area. The formal living and dining rooms are great for hosting, while the freshly stained deck is perfect for outdoor entertaining. Upstairs, find 4 bedrooms and a shared bath with a private area. The primary suite includes a luxurious 5-piece bath and walk-in closet. Recent updates include a new roof (2025) and carpet (2025). Stroh Ranch offers a clubhouse, pools, fitness room, and easy access to Cherry Creek Trail and I-25. Come see this home today!



Marianne Hayes Smith
303-915-0287

MarianneSellsHomes@msn.com

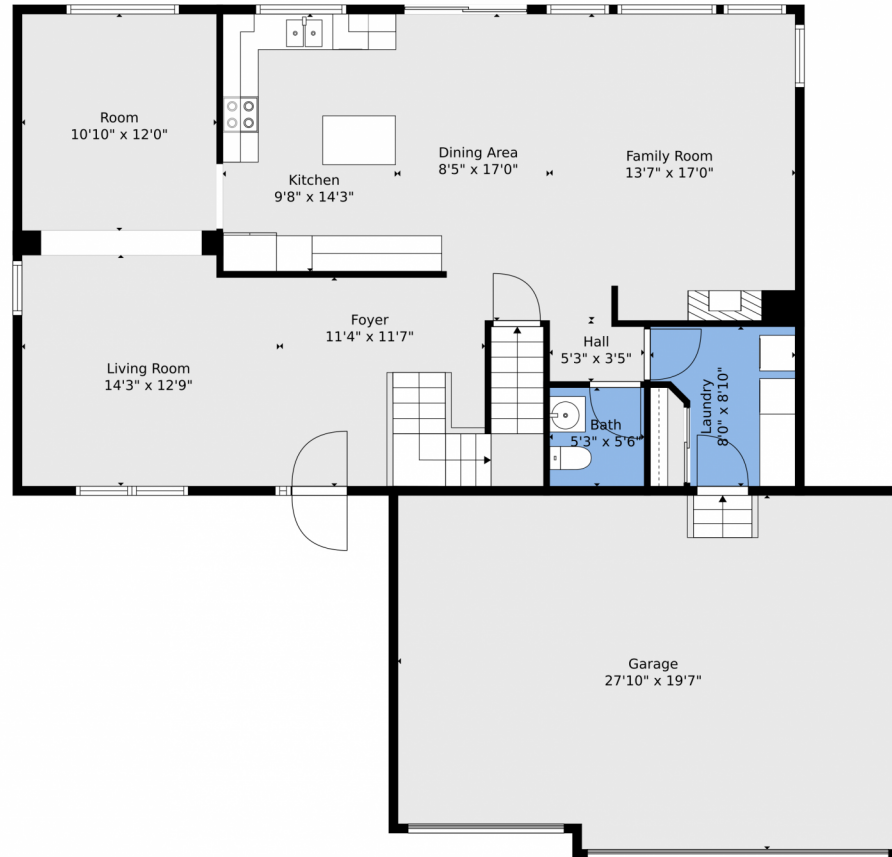
<https://www.coloradohomesmith.realtor/>



Scan code
for more
property
details



19151 E Hollow Creek Drive, Parker, CO 80134 — Main Level



TOTAL: 3105 sq. ft
BELOW GROUND: 936 sq. ft, FLOOR 2: 1121 sq. ft, FLOOR 3: 1048 sq. ft
EXCLUDED AREAS: UTILITY: 62 sq. ft, UNDEFINED: 9 sq. ft, GARAGE: 531 sq. ft,
OPEN TO BELOW: 99 sq. ft
WALLS: 244 sq. ft

Floor Plan Created By V1photos.com, Measurements Deamed Highly Reliable But Not Guaranteed.

Disclaimer: Sizes and Dimensions are Approximate, Actual May Vary.



Marianne Hayes Smith

303-915-0287

MarianneSellsHomes@msn.com

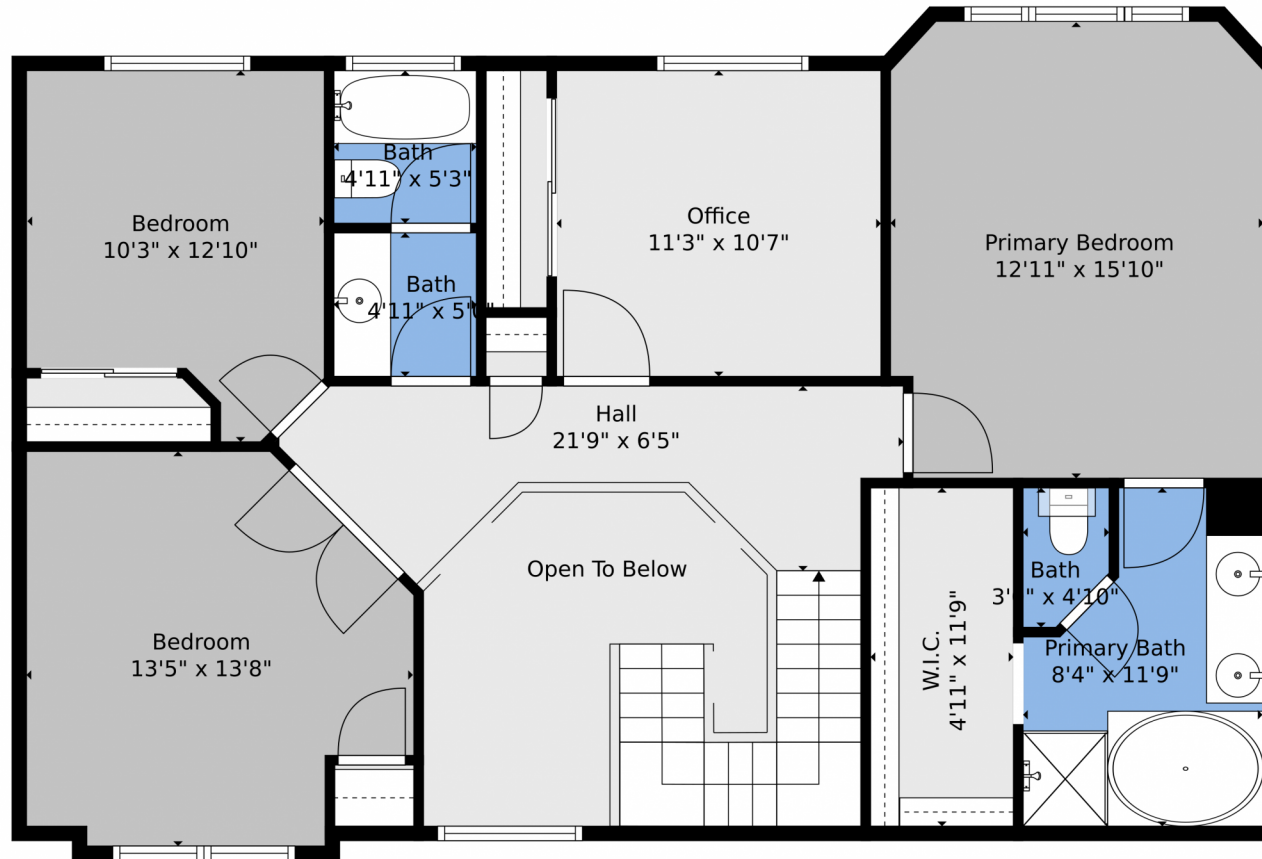
<https://www.coloradahomesmith.realtor/>



Scan code
for more
property
details



19151 E Hollow Creek Drive, Parker, CO 80134 – Upper Level



TOTAL: 3105 sq. ft
BELOW GROUND: 936 sq. ft, FLOOR 2: 1121 sq. ft, FLOOR 3: 1048 sq. ft
EXCLUDED AREAS: UTILITY: 62 sq. ft, UNDEFINED: 9 sq. ft, GARAGE: 531 sq. ft,
OPEN TO BELOW: 99 sq. ft
WALLS: 244 sq. ft

Floor Plan Created By V1photos.com, Measurements Deamed Highly Reliable But Not Guaranteed.

Disclaimer: Sizes and Dimensions are Approximate, Actual May Vary.



Marianne Hayes Smith

303-915-0287

MarianneSellsHomes@msn.com

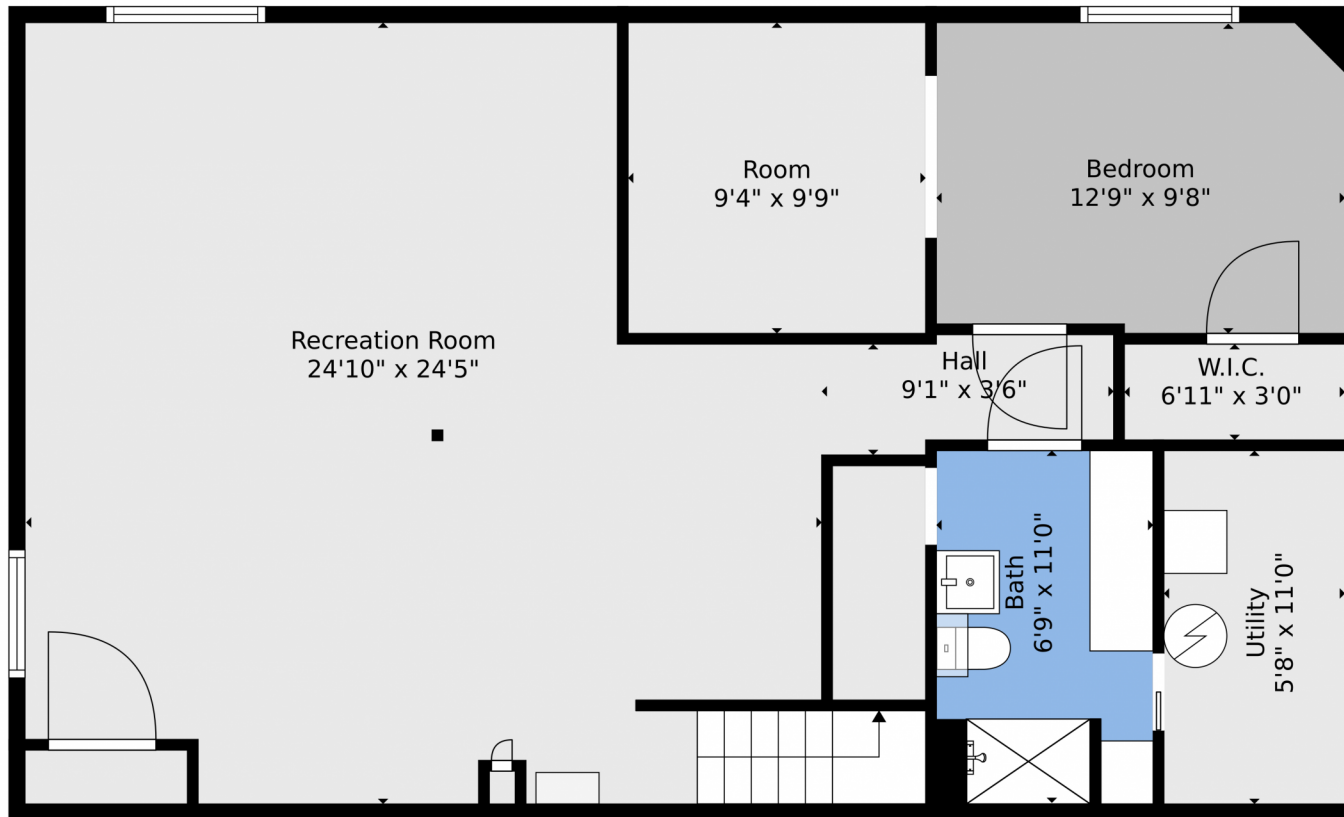
<https://www.coloradohomesmith.realtor/>



Scan code
for more
property
details



19151 E Hollow Creek Drive, Parker, CO 80134 — Lower Level



TOTAL: 3105 sq. ft
BELOW GROUND: 936 sq. ft, FLOOR 2: 1121 sq. ft, FLOOR 3: 1048 sq. ft
EXCLUDED AREAS: UTILITY: 62 sq. ft, UNDEFINED: 9 sq. ft, GARAGE: 531 sq. ft,
OPEN TO BELOW: 99 sq. ft
WALLS: 244 sq. ft

Floor Plan Created By V1photos.com, Measurements Deamed Highly Reliable But Not Guaranteed.



Disclaimer: Sizes and Dimensions are Approximate, Actual May Vary.



Marianne Hayes Smith

303-915-0287

MarianneSellsHomes@msn.com

<https://www.coloradohomesmith.realtor/>



Scan code
for more
property
details



19151 E Hollow Creek Drive, Parker, CO 80134 — All Levels



TOTAL: 3105 sq. ft
BELOW GROUND: 936 sq. ft, FLOOR 2: 1121 sq. ft, FLOOR 3: 1048 sq. ft
EXCLUDED AREAS: UTILITY: 62 sq. ft, UNDEFINED: 9 sq. ft, GARAGE: 531 sq. ft
OPEN TO BELOW: 99 sq. ft
WALLS: 244 sq. ft

Floor Plan Created By V1photos.com, Measurements Deamed Highly Reliable But Not Guaranteed.



Disclaimer: Sizes and Dimensions are Approximate, Actual May Vary.



Marianne Hayes Smith

303-915-0287

MarianneSellsHomes@msn.com

<https://www.coloradohomesmith.realtor/>

