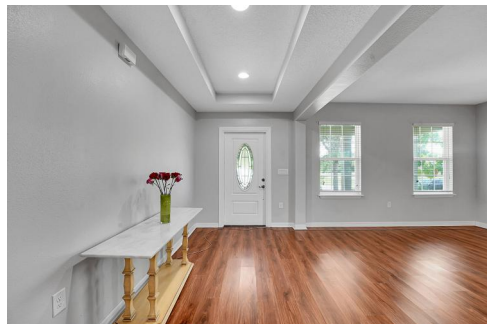


## Lush Backyard, Outdoor Enjoyment



Single Family



2501 SQFT



4 Beds



3/1 Baths



3 Car



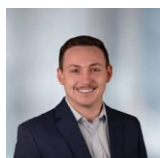
0.23 Acre

## PROPERTY DETAILS

This stunning single-family home at 4326 SW Calah Circle in Port St. Lucie, Florida, offers 2,501 sq. ft. of living space with 4 bedrooms, 3.5 bathrooms, and a 3-car garage. Located in a no-HOA community, it allows for personal customization.

Inside, a welcoming foyer with wood floors leads to an open floor plan. The kitchen features black appliances, an island with a sink, and stone countertops. The living room, with a ceiling fan and chandelier, is bright and inviting. The primary bedroom includes a raised ceiling and office area, while the primary bathroom boasts a garden tub and double vanity.

The serene backyard, with views of trees, is perfect for gatherings, and the enclosed patio allows for year-round enjoyment. Conveniently located near shopping and dining, this home is ideal for those seeking a vibrant lifestyle.



**Cameron Post**  
772-370-3990  
cameronpostsells@gmail.com



Scan code  
for more  
property  
details

