

1895 Canyonpoint Lane
Castle Pines, CO 80108
COMMUNITY: First Light at Canyons



Single Family



2736 SQFT



3 Beds



2 Baths



1 Car



0.1 Acre



Chris Crowley
303-921-1990
cc@crowleycapital.com



Scan code
for more
property
details



1895 Canyonpoint Lane, Castle Pines, CO 80108 — Main



TOTAL: 2508 sq. ft
BELOW GROUND: 895 sq. ft, FLOOR 2: 1613 sq. ft
EXCLUDED AREAS: BASEMENT: 622 sq. ft, GARAGE: 433 sq. ft, PORCH: 111 sq. ft,
PATIO: 130 sq. ft, COVERED PATIO: 121 sq. ft, COURTYARD: 387 sq. ft
WALLS: 215 sq. ft

Floor Plan Created By V1photos.com, Measurements Deamed Highly Reliable But Not Guaranteed.



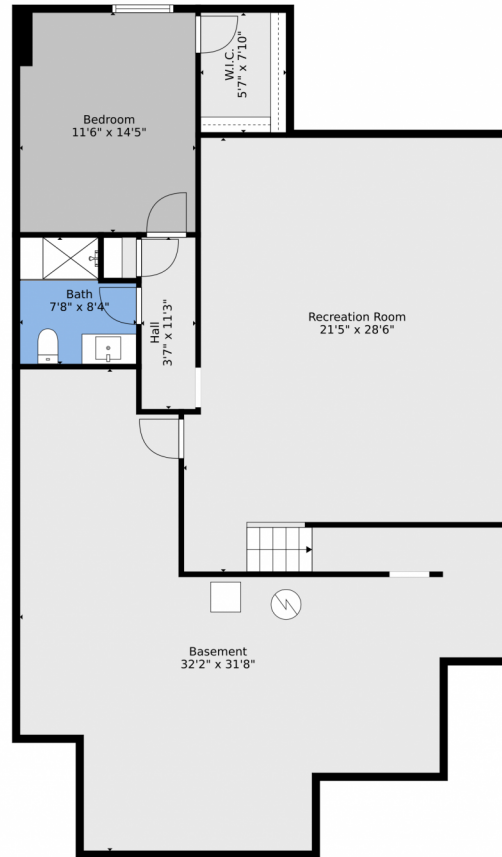
Disclaimer: Sizes and Dimensions are Approximate, Actual May Vary.



Chris Crowley
303-921-1990
cc@crowleycapital.com



1895 Canyonpoint Lane, Castle Pines, CO 80108 — Lower Level



TOTAL: 2508 sq. ft
BELOW GROUND: 895 sq. ft, FLOOR 2: 1613 sq. ft
EXCLUDED AREAS: BASEMENT: 622 sq. ft, GARAGE: 433 sq. ft, PORCH: 111 sq. ft,
PATIO: 130 sq. ft, COVERED PATIO: 121 sq. ft, COURTYARD: 387 sq. ft
WALLS: 215 sq. ft

Floor Plan Created By V1photos.com, Measurements Deamed Highly Reliable But Not Guaranteed.



Disclaimer: Sizes and Dimensions are Approximate, Actual May Vary.



Chris Crowley
303-921-1990
cc@crowleycapital.com



Scan code
for more
property
details



1895 Canyonpoint Lane, Castle Pines, CO 80108 — All Levels



TOTAL: 2508 sq. ft
BELOW GROUND: 895 sq. ft, FLOOR 2: 1613 sq. ft
EXCLUDED AREAS: BASEMENT: 622 sq. ft, GARAGE: 433 sq. ft, PORCH: 111 sq. ft,
PATIO: 130 sq. ft, COVERED PATIO: 121 sq. ft, COURTYARD: 387 sq. ft
WALLS: 215 sq. ft

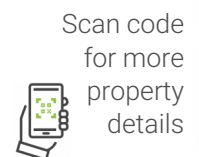
Floor Plan Created By V1photos.com, Measurements Deamed Highly Reliable But Not Guaranteed.



Disclaimer: Sizes and Dimensions are Approximate, Actual May Vary.



Chris Crowley
303-921-1990
cc@crowleycapital.com



Scan code
for more
property
details

