



670 Kensington Place
Wilton Manors, FL 33305
COMMUNITY: CYPRESS COVE CONDOMINIUM

PRICE \$434,900



floorplan_single_0



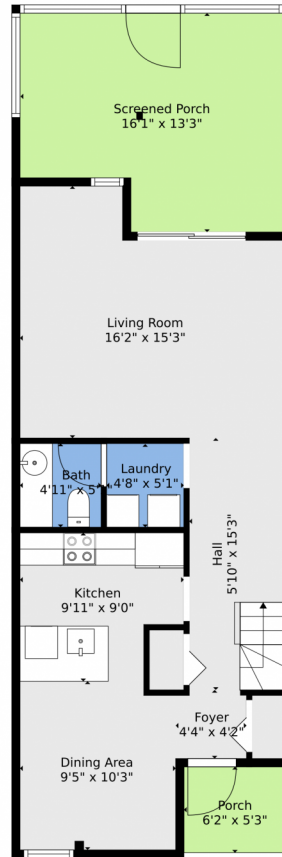
Townhouse 1200 SQFT 2 Beds 2/2 Baths 1 Car



Thomas (Tom) Wolf
954-709-2565
tom@tomwolfteam.com
<https://TomWolfTeam.com>



670 Kensington Place, Wilton Manors, FL 33305 – Main Level



TOTAL: 1199 sq. ft
FLOOR 1: 581 sq. ft, FLOOR 2: 618 sq. ft
EXCLUDED AREAS: SCREENED PORCH: 192 sq. ft, PORCH: 32 sq. ft, SCREENED BALCONY: 97 sq. ft
WALLS: 152 sq. ft

Floor Plan Created By V1photos.com, Measurements Deamed Highly Reliable But Not Guaranteed.



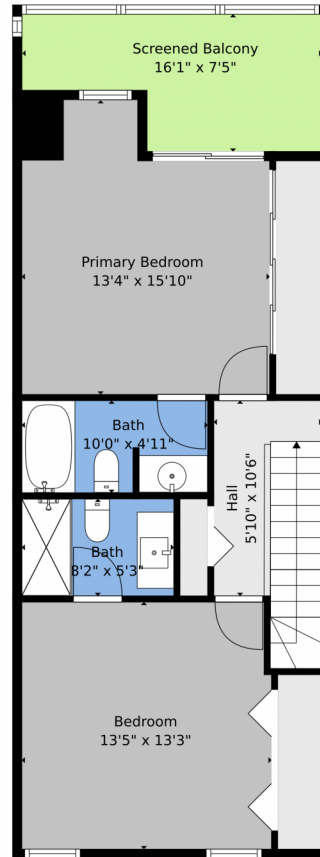
Disclaimer: Sizes and Dimensions are Approximate, Actual May Vary.



Thomas (Tom) Wolf
954-709-2565
tom@tomwolfteam.com
<https://TomWolfTeam.com>



670 Kensington Place, Wilton Manors, FL 33305 – 2nd Level



TOTAL: 1199 sq. ft
FLOOR 1: 581 sq. ft, FLOOR 2: 618 sq. ft
EXCLUDED AREAS: SCREENED PORCH: 192 sq. ft, PORCH: 32 sq. ft, SCREENED BALCONY: 97 sq. ft
WALLS: 152 sq. ft

Floor Plan Created By V1photos.com, Measurements Deamed Highly Reliable But Not Guaranteed.



Disclaimer: Sizes and Dimensions are Approximate, Actual May Vary.



Thomas (Tom) Wolf
954-709-2565
tom@tomwolfteam.com
<https://TomWolfTeam.com>



670 Kensington Place, Wilton Manors, FL 33305 – All Levels



TOTAL: 1199 sq. ft
FLOOR 1: 581 sq. ft, FLOOR 2: 618 sq. ft
EXCLUDED AREAS: SCREENED PORCH: 192 sq. ft, PORCH: 32 sq. ft, SCREENED BALCONY: 97 sq. ft
WALLS: 152 sq. ft

Floor Plan Created By V1photos.com, Measurements Deamed Highly Reliable But Not Guaranteed.



Disclaimer: Sizes and Dimensions are Approximate, Actual May Vary.



Thomas (Tom) Wolf
954-709-2565
tom@tomwolfteam.com
<https://TomWolfTeam.com>

