

2304 S Cypress Bend Dr  
Pompano Beach, FL 33069  
COMMUNITY: Cypress Bend I-B & I-C Co

MLS # F10517942  
PRICE \$1,799



Rental



1 Bed



1/1 Baths



7.86 Acre

## PROPERTY DETAILS

Welcome to this charming condominium at 2304 South Cypress Bend Drive, Pompano Beach, Florida. Spanning 810 square feet, it features an open floor plan ideal for coastal living. Enjoy easy access to local amenities and the waterfront, making it perfect for seasonal or year-round residents.

Upon entering, you're welcomed by a foyer leading into a spacious living area with light wood flooring and track lighting. The kitchen boasts light brown cabinetry and stainless steel appliances, complemented by a breakfast bar. The living room, filled with natural light, has a stylish accent wall. Step onto your private balcony for serene pond views.

Community amenities include a fenced outdoor pool, laundry facilities, and elevators. With parks, shopping, and dining nearby, this condo offers a vibrant lifestyle in Pompano Beach, blending relaxation and recreation.



**Silvia Maruri PA**  
954-471-0248  
silvia.maruri@outlook.com



Scan code  
for more  
property  
details



# Cypress Bend I-B

Pompano Beach, Broward, FL

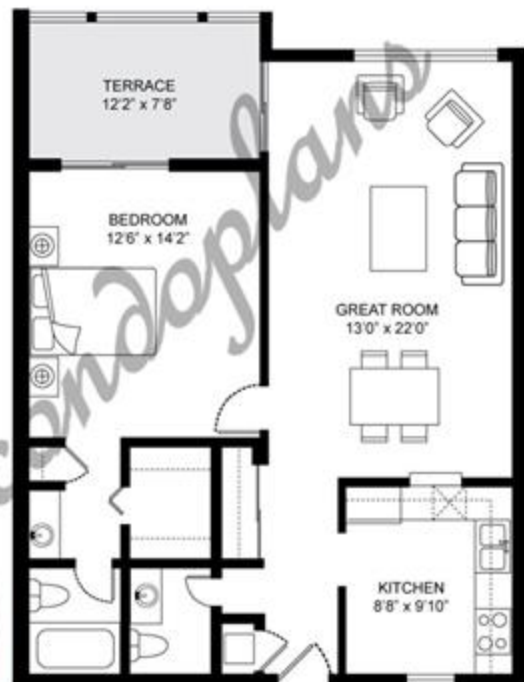
2304 S CYPRESS BEND DR

Unit 12 Floors 1-7

Bed 1 Full Bath 1 Half Bath 1 Levels 1

Living Area 810 Sq Ft / 75 m<sup>2</sup> approx.

Plan Type C



Floor plan may be mirrored, flipped, or not be oriented to site plan

