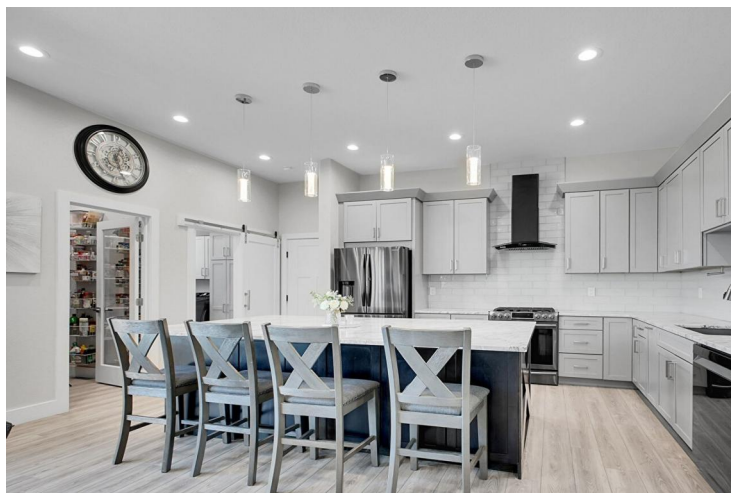




5328 Danvers Court
Castle Rock, CO 80104
COMMUNITY: Castlewood Ranch

PRICE
\$2,199,000

One-of-a-kind estate: 2 complete homes, 6 car garage & almost acre of beauty!



Single Family



9337 SQFT



9 Beds



8 Baths



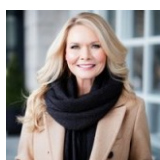
6 Car



0.92 Acre

PROPERTY DETAILS

Truly one-of-a-kind multi-generational estate featuring two complete, independent homes connected by an oversized 6+ car garage on nearly an acre of beautifully landscaped outdoor living. The main 2-story offers 5 bedrooms and 4 baths, a welcoming front porch, multiple living areas, a main-floor bedroom with full bath, an upstairs loft/theater, and a finished basement with mini kitchen, wine cellar, and large family/game room. The stunning ranch, built in 2021, boasts 4 bedrooms and 4 baths, an open-concept layout, custom kitchen with huge walk-in pantry, spa-like primary suite with sitting area, and a finished basement with home gym, playroom, wet bar, wine cellar, and abundant storage. The connecting garage can be divided into two oversized 3-car garages for privacy, making this ideal for extended family, guests, or rental income. Outdoor spaces include multiple patios for both private retreats and large gatherings.



Christine Garver

720-376-8261

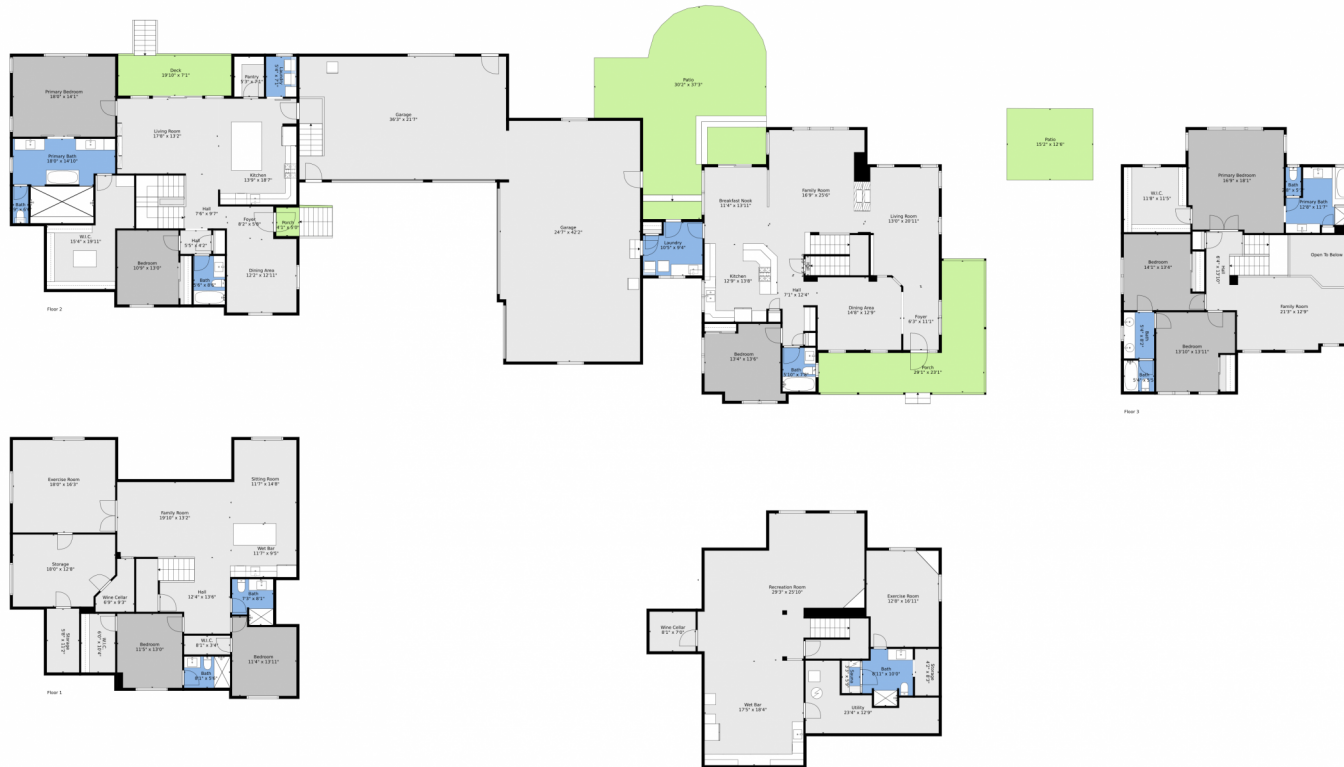
christinesellscolorado@yahoo.com

<https://christinegarver.myrealtyonegroup.com/>

Scan code
for more
property
details



5328 Danvers Court, Castle Rock, CO 80104 — All Levels

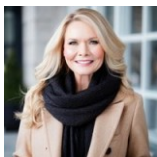


TOTAL: 7993 sq. ft
 BELOW GROUND: 2965 sq. ft, FLOOR 2: 3567 sq. ft, FLOOR 3: 1461 sq. ft
 EXCLUDED AREAS: STORAGE: 315 sq. ft, UTILITY: 179 sq. ft, GARAGE: 1795 sq. ft.
 PORCH: 397 sq. ft, PATIO: 931 sq. ft, DECK: 147 sq. ft,
 OPEN TO BELOW: 99 sq. ft
 WALLS: 594 sq. ft

Floor Plan Created By V1photos.com, Measurements Deamed Highly Reliable But Not Guaranteed.



Disclaimer: Sizes and Dimensions are Approximate, Actual May Vary.



Christine Garver
 720-376-8261
 christinesellscolorado@yahoo.com
<https://christinegarver.myrealtynegroup.com/>



Scan code
 for more
 property
 details

