



 Single Family  3378 SQFT  4 Beds  3 Baths  2 Car

PROPERTY DETAILS

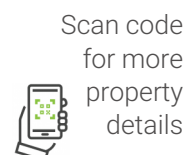
This exceptional single-family home in the Fairways of South Suburban, Centennial, Colorado, features 4 bedrooms and 3 bathrooms across 3,378 square feet. Its attractive brick exterior enhances energy efficiency. Inside, a foyer leads to a spacious living room with 10 foot ceilings and a gas fireplace, perfect for relaxation and entertaining. The spacious kitchen boasts oak cabinetry, a kitchen island and granite countertops, flowing into a dining area with crown molding and a chandelier.

Residents enjoy community amenities of a pool and tennis courts. Outdoor spaces like a deck and patio are ideal for gatherings or quiet evenings. With proximity to South Suburban Golf Course and the South Suburban Recreation Center, shopping, dining, easy access to DT and DTC as well as the foothills this property is a unique opportunity in an upscale community.

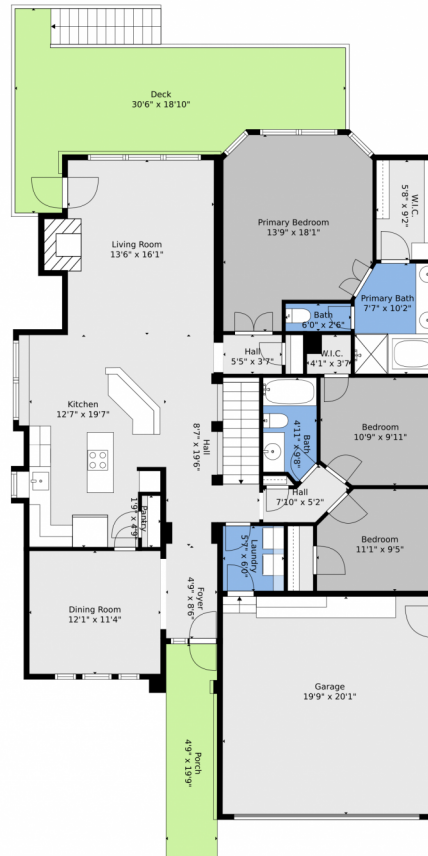


Carol Hoffman
303-378-6887
carolghoffman@gmail.com

Rob Hoffman
303-638-3529
robhoffman@kw.com



4179 East Phillips Place, Centennial, CO 80122 — Main



TOTAL: 1613 sq. ft
BELOW GROUND: 14 sq. ft, FLOOR 2: 1599 sq. ft.
EXCLUDED AREAS: W.I.C.: 42 sq. ft, BEDROOM: 144 sq. ft, FULL BATH: 62 sq. ft,
STORAGE: 176 sq. ft, BASEMENT: 890 sq. ft, COURTYARD: 461 sq. ft,
COVERED PATIO: 54 sq. ft, UTILITY: 217 sq. ft, GARAGE: 397 sq. ft,
PORCH: 94 sq. ft, DECK: 345 sq. ft, BAY WINDOW: 4 sq. ft
WALLS: 204 sq. ft

Floor Plan Created By V1photos.com, Measurements Deamed Highly Reliable But Not Guaranteed.



Disclaimer: Sizes and Dimensions are Approximate, Actual May Vary.



Carol Hoffman
303-378-6887
carolghoffman@gmail.com

Rob Hoffman
303-638-3529
robhoffman@kw.com



Scan code
for more
property
details



4179 East Phillips Place, Centennial, CO 80122 — Basement



TOTAL: 1613 sq. ft

BELOW GROUND: 14 sq. ft, FLOOR 2: 1599 sq. ft.
EXCLUDED AREAS: W.I.C.: 42 sq. ft, BEDROOM: 144 sq. ft, FULL BATH: 62 sq. ft,
STORAGE: 176 sq. ft, BASEMENT: 890 sq. ft, COURTYARD: 461 sq. ft,
COVERED PATIO: 54 sq. ft, UTILITY: 217 sq. ft, GARAGE: 397 sq. ft,
PORCH: 94 sq. ft, DECK: 345 sq. ft, BAY WINDOW: 4 sq. ft
WALLS: 204 sq. ft

Floor Plan Created By V1photos.com, Measurements Deamed Highly Reliable But Not Guaranteed.

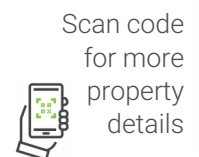


Disclaimer: Sizes and Dimensions are Approximate, Actual May Vary.



Carol Hoffman
303-378-6887
carolghoffman@gmail.com

Rob Hoffman
303-638-3529
robhoffman@kw.com



Scan code
for more
property
details



4179 East Phillips Place, Centennial, CO 80122 — All Levels



TOTAL: 1613 sq. ft
 BELOW GROUND: 14 sq. ft, FLOOR 2: 1599 sq. ft
 EXCLUDED AREAS: W.I.C.: 42 sq. ft, BEDROOM: 144 sq. ft, FULL BATH: 62 sq. ft,
 STORAGE: 176 sq. ft, BASEMENT: 890 sq. ft, COURTYARD: 461 sq. ft,
 COVERED PATIO: 54 sq. ft, UTILITY: 217 sq. ft, GARAGE: 397 sq. ft,
 PORCH: 94 sq. ft, DECK: 345 sq. ft, BAY WINDOW: 4 sq. ft
 WALLS: 204 sq. ft

Floor Plan Created By V1photos.com, Measurements Deamed Highly Reliable But Not Guaranteed.



Disclaimer: Sizes and Dimensions are Approximate, Actual May Vary.



Carol Hoffman
 303-378-6887
 carolghoffman@gmail.com

Rob Hoffman
 303-638-3529
 robhoffman@kw.com

