



510 Dukes  
Dacono, CO 80514  
COMMUNITY: Sharpe Farms

MLS # 7599927  
PRICE \$545,000



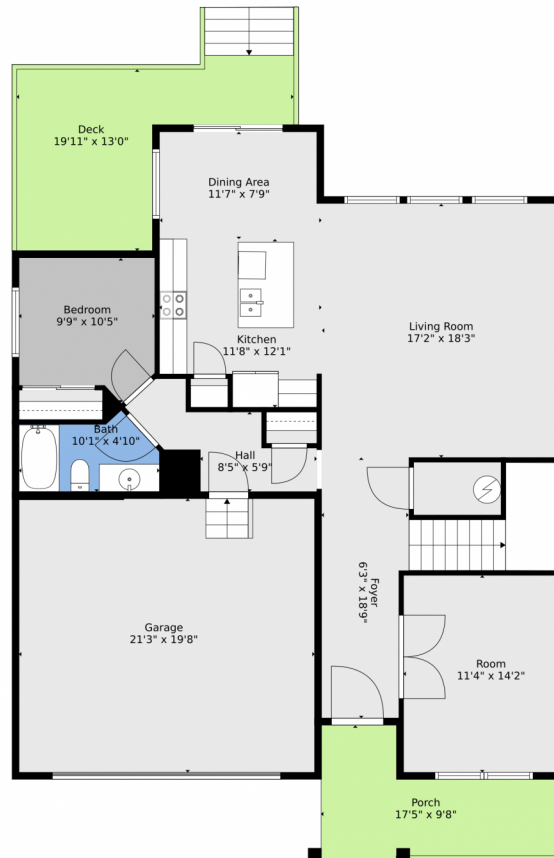
Single Family   2389 SQFT   4 Beds   3 Baths   2 Car



Lillian Jessop  
303-906-1966  
lillian.realtyonegroup@gmail.com



## 510 Dukes, Dacono, CO 80514 — Main Level



**TOTAL: 2127 sq. ft**  
FLOOR 1: 1151 sq. ft, FLOOR 2: 976 sq. ft  
EXCLUDED AREAS: GARAGE: 418 sq. ft, PORCH: 125 sq. ft, DECK: 210 sq. ft,  
OPEN TO BELOW: 23 sq. ft  
WALLS: 182 sq. ft

Floor Plan Created By V1photos.com, Measurements Deamed Highly Reliable But Not Guaranteed.



Disclaimer: Sizes and Dimensions are Approximate, Actual May Vary.



**Lillian Jessop**  
303-906-1966  
lillian.realtyonegroup@gmail.com



Scan code  
for more  
property  
details



## 510 Dukes, Dacono, CO 80514 — Lower Level



**TOTAL: 2127 sq. ft**  
FLOOR 1: 1151 sq. ft, FLOOR 2: 976 sq. ft  
EXCLUDED AREAS: GARAGE: 418 sq. ft, PORCH: 125 sq. ft, DECK: 210 sq. ft,  
OPEN TO BELOW: 23 sq. ft  
WALLS: 182 sq. ft

Floor Plan Created By V1photos.com, Measurements Deamed Highly Reliable But Not Guaranteed.



Disclaimer: Sizes and Dimensions are Approximate, Actual May Vary.



**Lillian Jessop**  
303-906-1966  
lillian.realtyonengroup@gmail.com



Scan code  
for more  
property  
details



# 510 Dukes, Dacono, CO 80514 — All Levels



**TOTAL: 2127 sq. ft**  
 FLOOR 1: 1151 sq. ft, FLOOR 2: 976 sq. ft  
 EXCLUDED AREAS: GARAGE: 418 sq. ft, PORCH: 125 sq. ft, DECK: 210 sq. ft,  
 OPEN TO BELOW: 23 sq. ft  
 WALLS: 182 sq. ft

Floor Plan Created By V1photos.com, Measurements Deamed Highly Reliable But Not Guaranteed.

Disclaimer: Sizes and Dimensions are Approximate, Actual May Vary.



**Lillian Jessop**  
 303-906-1966  
 lillian.realtyonegroup@gmail.com

