



Single Family



2000 SQFT



3 Beds



2/1 Baths



Taylor Haas

303-665-7368

taylorh@coloradorpm.com

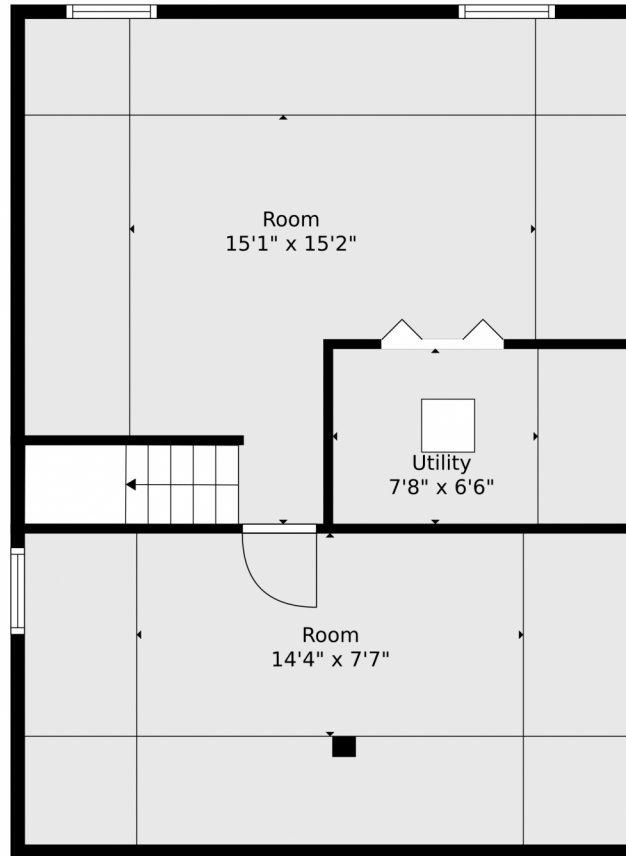
<https://www.coloradorpm.com/available-rental-properties-denv>



Scan code
for more
property
details



2520 Emerson Street, Denver, CO 80205 — Lower Level



TOTAL: 2000 sq. ft
BELOW GROUND: 617 sq. ft, FLOOR 2: 794 sq. ft, FLOOR 3: 589 sq. ft
EXCLUDED AREAS: UTILITY: 72 sq. ft, PORCH: 101 sq. ft, PATIO: 339 sq. ft,
GARAGE: 268 sq. ft, FIREPLACE: 12 sq. ft, LOW CEILING: 74 sq. ft
WALLS: 206 sq. ft

Floor Plan Created By V1photos.com, Measurements Deamed Highly Reliable But Not Guaranteed.



Disclaimer: Sizes and Dimensions are Approximate, Actual May Vary.



Taylor Haas

303-665-7368

taylorh@coloradorpm.com

<https://www.coloradorpm.com/available-rental-properties-denver>



Scan code
for more
property
details



2520 Emerson Street, Denver, CO 80205 — Main Level



TOTAL: 2000 sq. ft
BELOW GROUND: 617 sq. ft, FLOOR 2: 794 sq. ft, FLOOR 3: 589 sq. ft
EXCLUDED AREAS: UTILITY: 72 sq. ft, PORCH: 101 sq. ft, PATIO: 339 sq. ft,
GARAGE: 268 sq. ft, FIREPLACE: 12 sq. ft, LOW CEILING: 74 sq. ft
WALLS: 206 sq. ft

Floor Plan Created By V1photos.com, Measurements Deamed Highly Reliable But Not Guaranteed.



Disclaimer: Sizes and Dimensions are Approximate, Actual May Vary.



Taylor Haas

303-665-7368

taylorh@coloradorpm.com

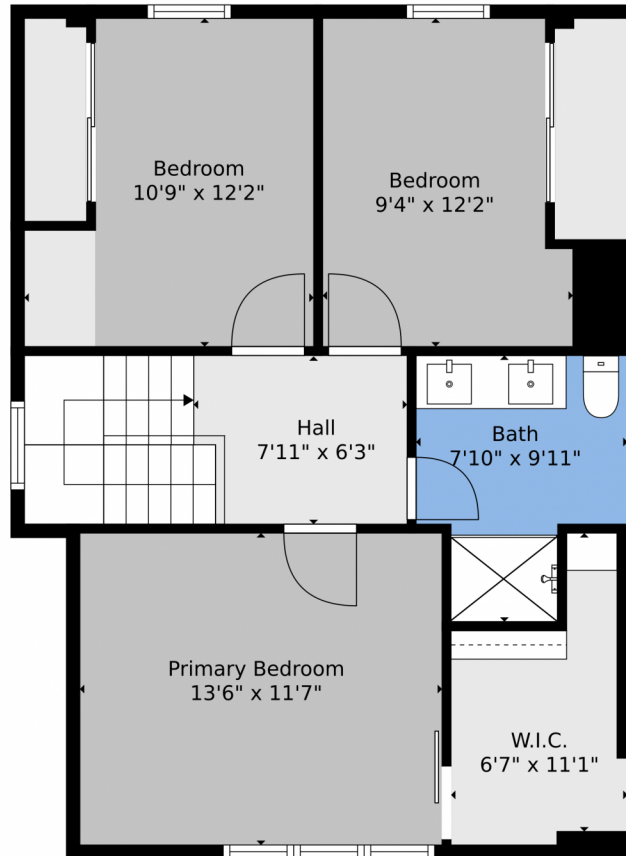
<https://www.coloradorpm.com/available-rental-properties-denver>



Scan code
for more
property
details



2520 Emerson Street, Denver, CO 80205 — Upper Level



TOTAL: 2000 sq. ft
BELOW GROUND: 617 sq. ft, FLOOR 2: 794 sq. ft, FLOOR 3: 589 sq. ft
EXCLUDED AREAS: UTILITY: 72 sq. ft, PORCH: 101 sq. ft, PATIO: 339 sq. ft,
GARAGE: 268 sq. ft, FIREPLACE: 12 sq. ft, LOW CEILING: 74 sq. ft
WALLS: 206 sq. ft

Floor Plan Created By V1photos.com, Measurements Deamed Highly Reliable But Not Guaranteed.



Disclaimer: Sizes and Dimensions are Approximate, Actual May Vary.



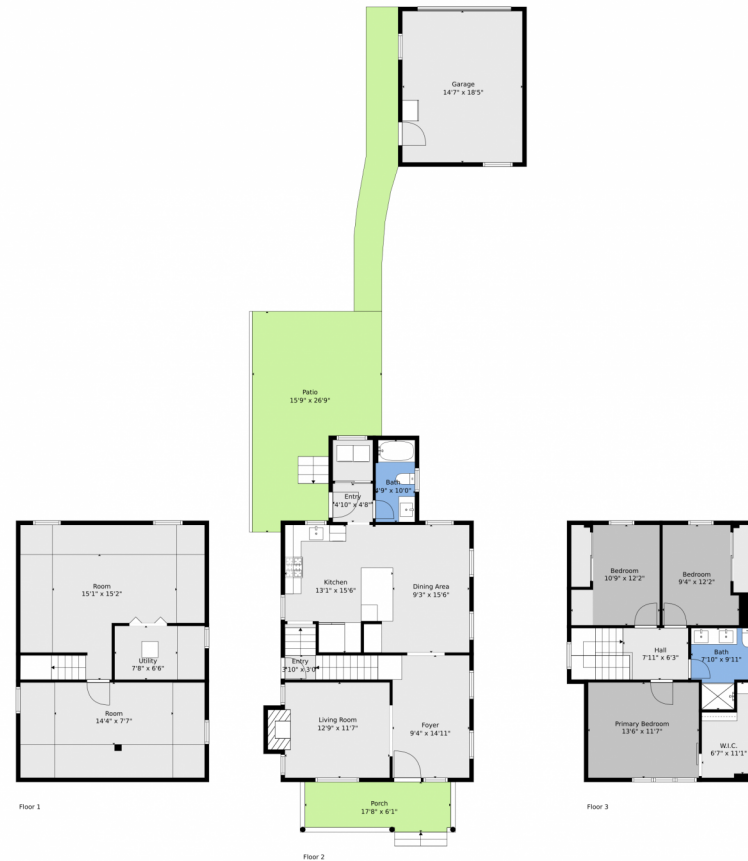
Taylor Haas
303-665-7368
taylorh@coloradorm.com
<https://www.coloradorm.com/available-rental-properties-denver>



Scan code
for more
property
details



2520 Emerson Street, Denver, CO 80205 — All Levels



TOTAL: 2000 sq. ft
BELOW GROUND: 617 sq. ft, FLOOR 2: 794 sq. ft, FLOOR 3: 589 sq. ft
EXCLUDED AREAS: UTILITY: 72 sq. ft, PORCH: 101 sq. ft, PATIO: 339 sq. ft,
GARAGE: 268 sq. ft, FIREPLACE: 12 sq. ft, LOW CEILING: 74 sq. ft
WALLS: 206 sq. ft

Floor Plan Created By V1photos.com, Measurements Deamed Highly Reliable But Not Guaranteed.

Disclaimer: Sizes and Dimensions are Approximate, Actual May Vary.



Taylor Haas
303-665-7368
taylorh@coloradorm.com
<https://www.coloradorm.com/available-rental-properties-denver>

