



601 East 19th Street Drive
Greeley, CO 80631



Single Family



3204 SQFT



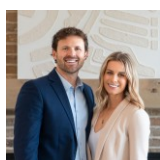
4 Beds



3 Baths



0.34 Acre



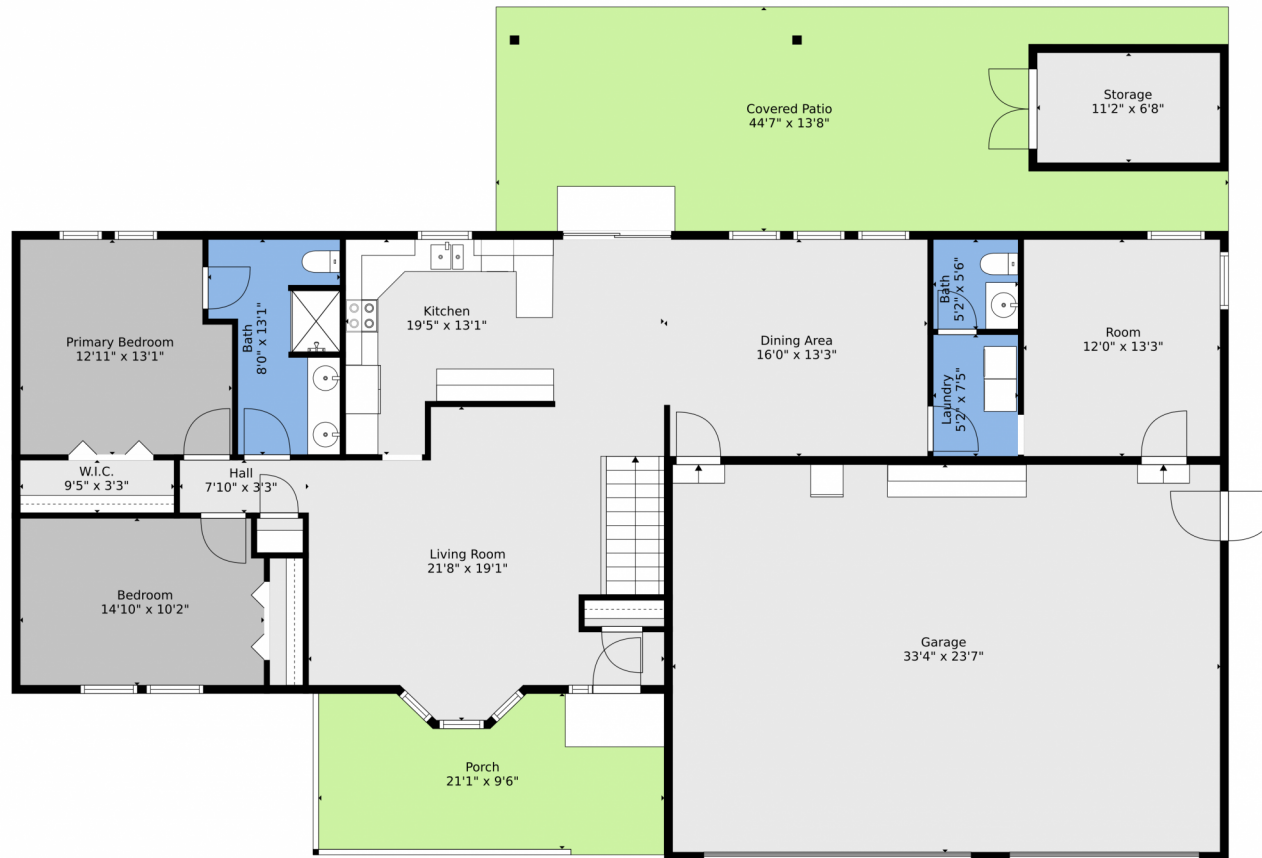
Scott & Carli Nitzel
970-590-5450
scott@nexthomefoundations.com



Scan code
for more
property
details



601 East 19th Street Drive, Greeley, CO 80631 — Main

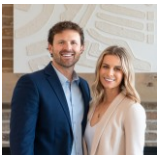


TOTAL: 2272 sq. ft
BELOW GROUND: 748 sq. ft, FLOOR 2: 1524 sq. ft
EXCLUDED AREAS: UTILITY: 251 sq. ft, GARAGE: 788 sq. ft, STORAGE: 75 sq. ft,
PORCH: 190 sq. ft, COVERED PATIO: 516 sq. ft
WALLS: 219 sq. ft

Floor Plan Created By V1photos.com, Measurements Deamed Highly Reliable But Not Guaranteed.



Disclaimer: Sizes and Dimensions are Approximate, Actual May Vary.



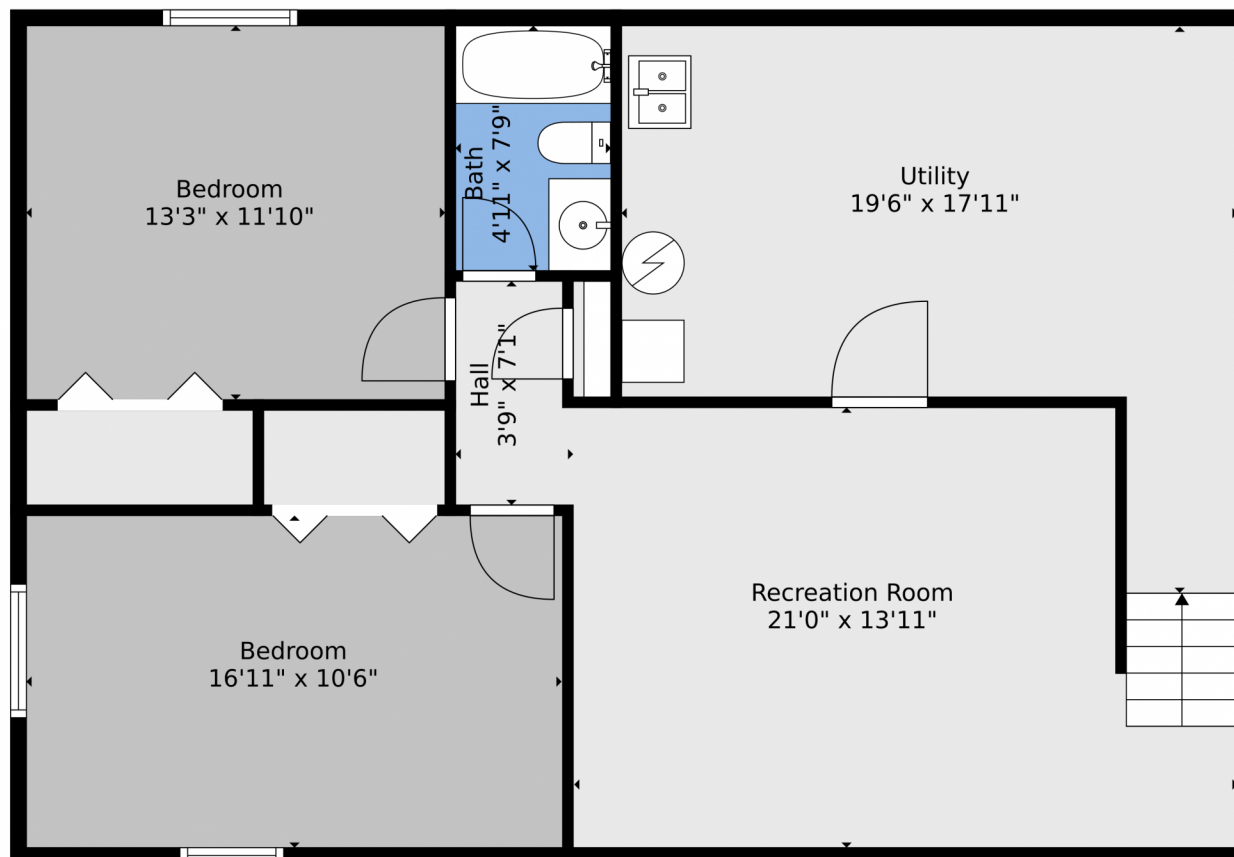
Scott & Carli Nitzel
970-590-5450
scott@nexthomefoundations.com



Scan code
for more
property
details



601 East 19th Street Drive, Greeley, CO 80631 — Basement

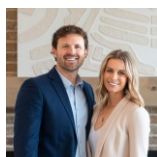


TOTAL: 2272 sq. ft
BELOW GROUND: 748 sq. ft, FLOOR 2: 1524 sq. ft
EXCLUDED AREAS: UTILITY: 251 sq. ft, GARAGE: 788 sq. ft, STORAGE: 75 sq. ft,
PORCH: 190 sq. ft, COVERED PATIO: 516 sq. ft
WALLS: 219 sq. ft

Floor Plan Created By V1photos.com, Measurements Deamed Highly Reliable But Not Guaranteed.



Disclaimer: Sizes and Dimensions are Approximate, Actual May Vary.



Scott & Carli Nitzel
970-590-5450
scott@nexthomefoundations.com



Scan code
for more
property
details



601 East 19th Street Drive, Greeley, CO 80631 — All Levels

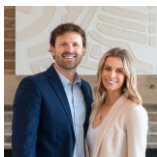


TOTAL: 2272 sq. ft
BELOW GROUND: 748 sq. ft, FLOOR 2: 1524 sq. ft
EXCLUDED AREAS: UTILITY: 251 sq. ft, GARAGE: 788 sq. ft, STORAGE: 75 sq. ft,
PORCH: 190 sq. ft, COVERED PATIO: 516 sq. ft
WALLS: 219 sq. ft

Floor Plan Created By V1photos.com, Measurements Deamed Highly Reliable But Not Guaranteed.



Disclaimer: Sizes and Dimensions are Approximate, Actual May Vary.



Scott & Carli Nitzel
970-590-5450
scott@nexthomefoundations.com



Scan code
for more
property
details

