




 Single Family

 2380 SQFT

 3 Beds

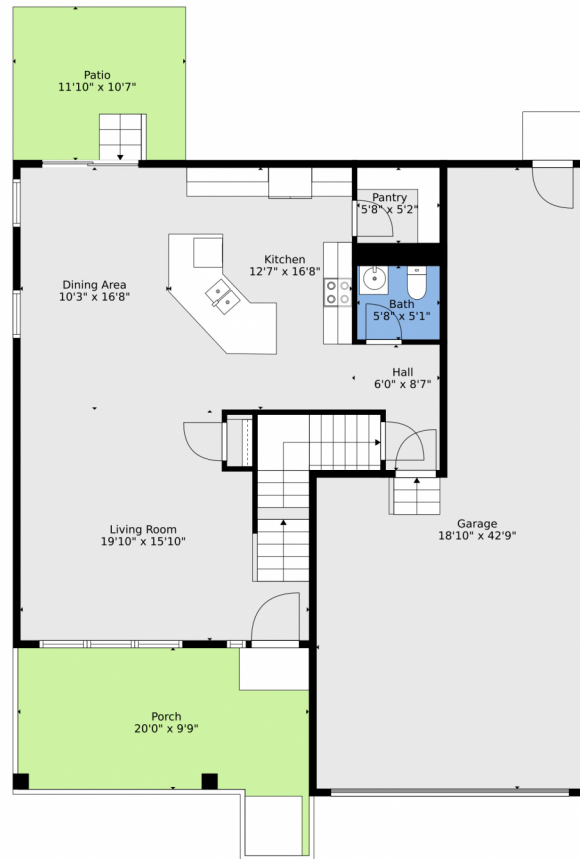
 2/1 Baths



Taylor Haas
 303-665-7368
 taylorh@coloradorpm.com
<https://www.coloradorpm.com/available-rental-properties-denver>



2427 Tempest Drive, Colorado Springs, CO 80939 — Main



TOTAL: 2230 sq. ft
BELOW GROUND: 0 sq. ft, FLOOR 2: 834 sq. ft, FLOOR 3: 1396 sq. ft
EXCLUDED AREAS: BASEMENT: 764 sq. ft, GARAGE: 612 sq. ft, PORCH: 215 sq. ft,
PATIO: 124 sq. ft
WALLS: 241 sq. ft

Floor Plan Created By V1photos.com, Measurements Deamed Highly Reliable But Not Guaranteed.



Disclaimer: Sizes and Dimensions are Approximate, Actual May Vary.



Taylor Haas
303-665-7368
taylorh@coloradorpm.com
<https://www.coloradorpm.com/available-rental-properties-denver>



Scan code
for more
property
details



2427 Tempest Drive, Colorado Springs, CO 80939 – 2nd Level



TOTAL: 2230 sq. ft
BELOW GROUND: 0 sq. ft, FLOOR 2: 834 sq. ft, FLOOR 3: 1396 sq. ft
EXCLUDED AREAS: BASEMENT: 764 sq. ft, GARAGE: 612 sq. ft, PORCH: 215 sq. ft,
PATIO: 124 sq. ft
WALLS: 241 sq. ft

Floor Plan Created By V1photos.com, Measurements Deamed Highly Reliable But Not Guaranteed.



Disclaimer: Sizes and Dimensions are Approximate, Actual May Vary.



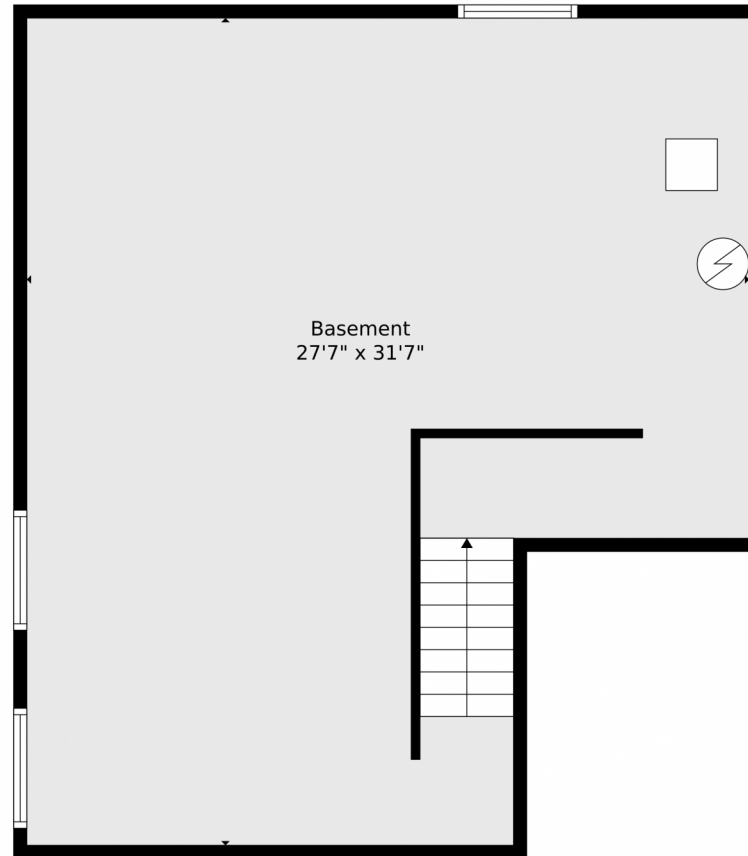
Taylor Haas
303-665-7368
taylorh@coloradorpm.com
<https://www.coloradorpm.com/available-rental-properties-denver>



Scan code
for more
property
details



2427 Tempest Drive, Colorado Springs, CO 80939 — Basement



TOTAL: 2230 sq. ft
BELOW GROUND: 0 sq. ft, FLOOR 2: 834 sq. ft, FLOOR 3: 1396 sq. ft
EXCLUDED AREAS: BASEMENT: 764 sq. ft, GARAGE: 612 sq. ft, PORCH: 215 sq. ft,
PATIO: 124 sq. ft
WALLS: 241 sq. ft

Floor Plan Created By V1photos.com, Measurements Deamed Highly Reliable But Not Guaranteed.



Disclaimer: Sizes and Dimensions are Approximate, Actual May Vary.



Taylor Haas

303-665-7368

taylorh@coloradorpm.com

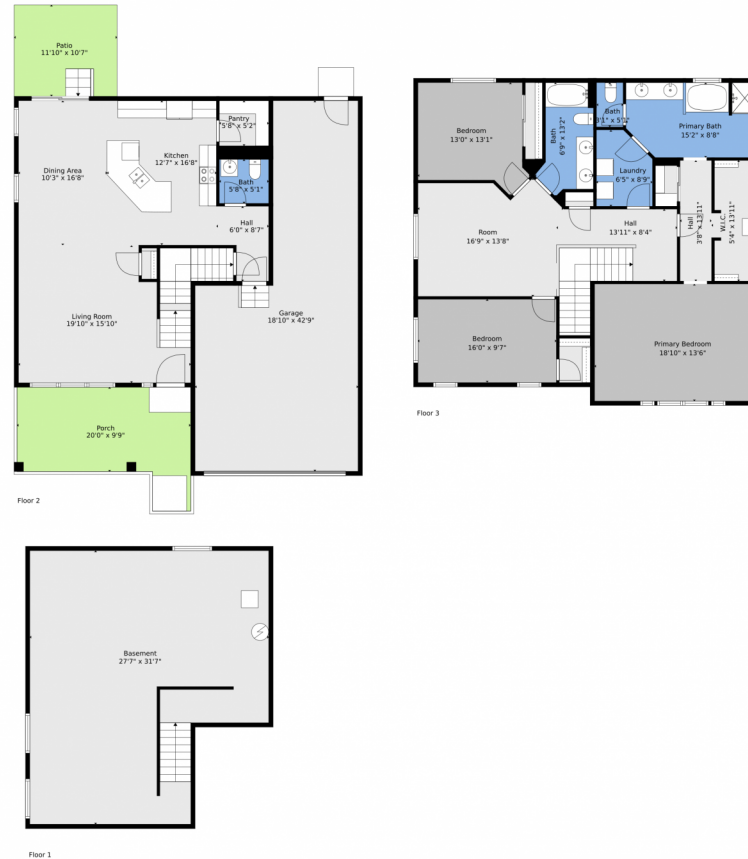
<https://www.coloradorpm.com/available-rental-properties-denver>



Scan code
for more
property
details



2427 Tempest Drive, Colorado Springs, CO 80939 — All Levels



TOTAL: 2230 sq. ft
BELOW GROUND: 0 sq. ft, FLOOR 2: 834 sq. ft, FLOOR 3: 1396 sq. ft
EXCLUDED AREAS: BASEMENT: 764 sq. ft, GARAGE: 612 sq. ft, PORCH: 215 sq. ft,
PATIO: 124 sq. ft
WALLS: 241 sq. ft

Floor Plan Created By V1photos.com, Measurements Deamed Highly Reliable But Not Guaranteed.



Disclaimer: Sizes and Dimensions are Approximate, Actual May Vary.



Taylor Haas

303-665-7368

taylorh@coloradorpm.com

<https://www.coloradorpm.com/available-rental-properties-denver>



Scan code
for more
property
details

