

Red Slipper
Realty

2362 Beech Court
Golden, CO 80401
COMMUNITY: Apple Valley

MLS # 3120966
PRICE \$499,900



Single Family



1820 SQFT



3 Beds



2 Baths



2 Car



0.21 Acre



Beverly Tompkins
303-523-4343
cloud_nine@q.com



Scan code
for more
property
details



2362 Beech Court, Golden, CO 80401 — Main



TOTAL: 1535 sq. ft
FLOOR 1: 682 sq. ft, FLOOR 2: 853 sq. ft
EXCLUDED AREAS: UTILITY: 145 sq. ft, FIREPLACE: 26 sq. ft, GARAGE: 360 sq. ft,
STORAGE: 55 sq. ft, DECK: 794 sq. ft, PORCH: 33 sq. ft
WALLS: 163 sq. ft

Floor Plan Created By V1photos.com, Measurements Deamed Highly Reliable But Not Guaranteed.



Disclaimer: Sizes and Dimensions are Approximate, Actual May Vary.



Beverly Tompkins
303-523-4343
cloud_nine@q.com



2362 Beech Court, Golden, CO 80401 — 2nd Level



TOTAL: 1535 sq. ft
FLOOR 1: 682 sq. ft, FLOOR 2: 853 sq. ft
EXCLUDED AREAS: UTILITY: 145 sq. ft, FIREPLACE: 26 sq. ft, GARAGE: 360 sq. ft,
STORAGE: 55 sq. ft, DECK: 794 sq. ft, PORCH: 33 sq. ft
WALLS: 163 sq. ft

Floor Plan Created By V1photos.com, Measurements Deamed Highly Reliable But Not Guaranteed.



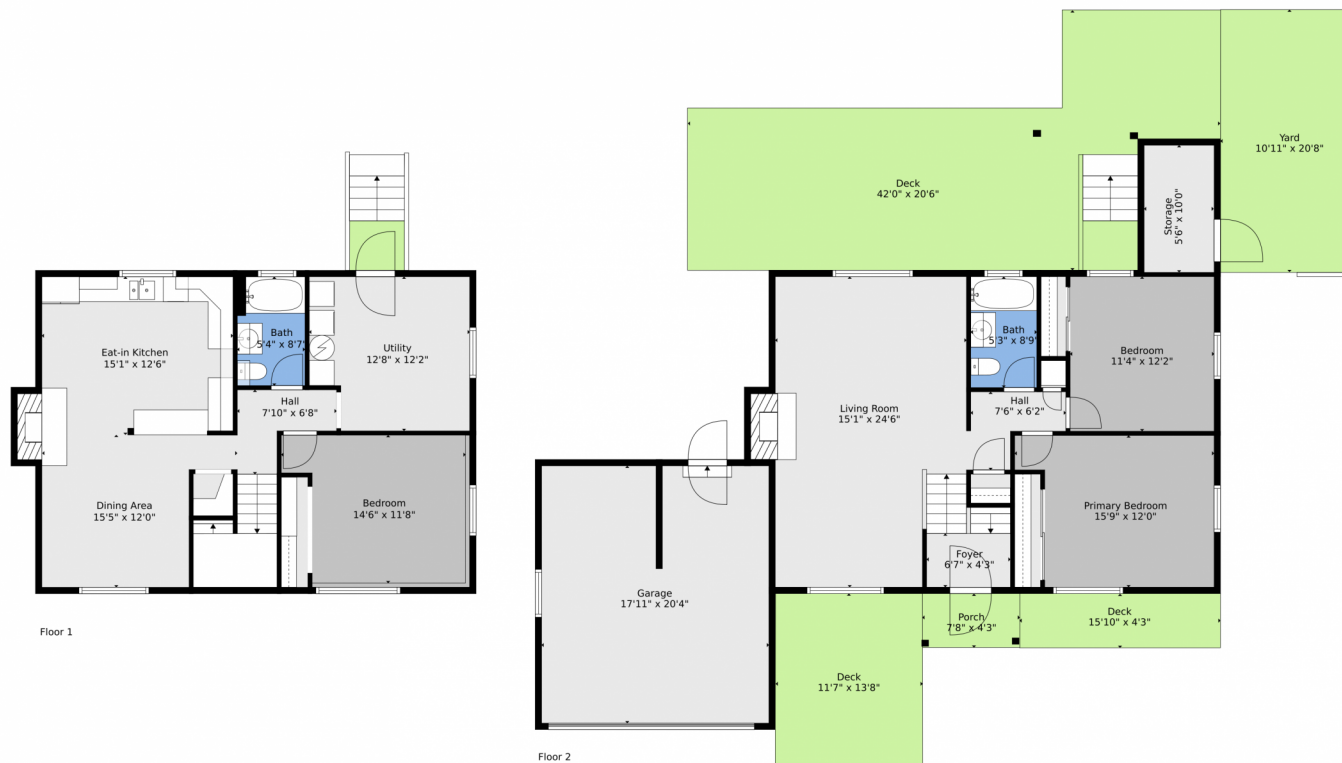
Disclaimer: Sizes and Dimensions are Approximate, Actual May Vary.



Beverly Tompkins
303-523-4343
cloud_nine@q.com



2362 Beech Court, Golden, CO 80401 — All Levels



TOTAL: 1535 sq. ft
FLOOR 1: 682 sq. ft, FLOOR 2: 853 sq. ft
EXCLUDED AREAS: UTILITY: 145 sq. ft, FIREPLACE: 26 sq. ft, GARAGE: 360 sq. ft,
STORAGE: 55 sq. ft, DECK: 794 sq. ft, PORCH: 33 sq. ft
WALLS: 163 sq. ft

Floor Plan Created By V1photos.com, Measurements Deamed Highly Reliable But Not Guaranteed.



Disclaimer: Sizes and Dimensions are Approximate, Actual May Vary.



Beverly Tompkins
303-523-4343
cloud_nine@q.com



Scan code
for more
property
details

