




 Single Family

 3520 SQFT

 3 Beds

 3 Baths



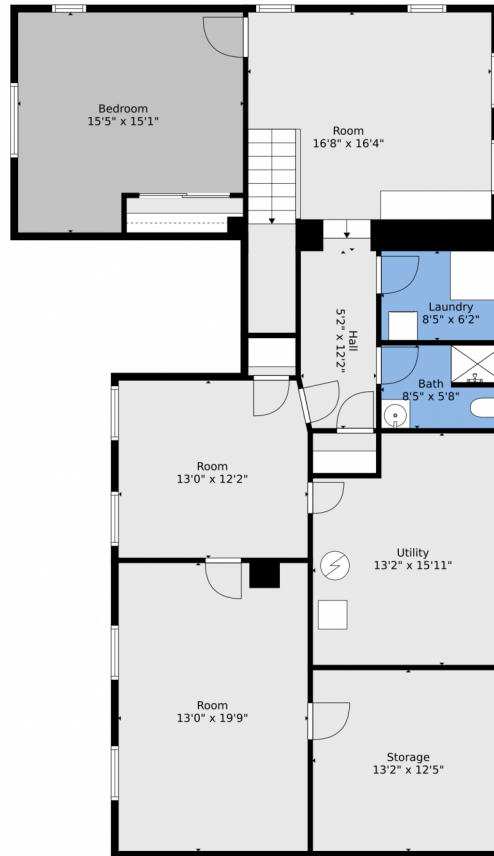
Taylor Haas
303-665-7368
taylorh@coloradorpm.com
<https://www.coloradorpm.com/available-rental-properties-denv>



Scan code
for more
property
details



975 South Vine Street, Denver, CO 80209 — Lower Level



TOTAL: 2776 sq. ft
BELOW GROUND: 1161 sq. ft, FLOOR 2: 1615 sq. ft
EXCLUDED AREAS: STORAGE: 167 sq. ft, UTILITY: 194 sq. ft, GARAGE: 231 sq. ft,
PORCH: 165 sq. ft, DECK: 110 sq. ft
WALLS: 229 sq. ft

Floor Plan Created By V1photos.com, Measurements Deamed Highly Reliable But Not Guaranteed.



Disclaimer: Sizes and Dimensions are Approximate, Actual May Vary.



Taylor Haas

303-665-7368

taylorh@coloradorpm.com

<https://www.coloradorpm.com/available-rental-properties-denver>



Scan code
for more
property
details



975 South Vine Street, Denver, CO 80209 — Main



TOTAL: 2776 sq. ft
BELOW GROUND: 1161 sq. ft, FLOOR 2: 1615 sq. ft
EXCLUDED AREAS: STORAGE: 167 sq. ft, UTILITY: 194 sq. ft, GARAGE: 231 sq. ft,
PORCH: 165 sq. ft, DECK: 110 sq. ft
WALLS: 229 sq. ft

Floor Plan Created By V1photos.com, Measurements Deamed Highly Reliable But Not Guaranteed.



Disclaimer: Sizes and Dimensions are Approximate, Actual May Vary.



Taylor Haas
303-665-7368
taylorh@coloradorpm.com
<https://www.coloradorpm.com/available-rental-properties-denver>



975 South Vine Street, Denver, CO 80209 – All Levels



TOTAL: 2776 sq. ft
BELOW GROUND: 1161 sq. ft, FLOOR 2: 1615 sq. ft
EXCLUDED AREAS: STORAGE: 167 sq. ft, UTILITY: 194 sq. ft, GARAGE: 231 sq. ft,
PORCH: 165 sq. ft, DECK: 110 sq. ft
WALLS: 229 sq. ft

Floor Plan Created By V1photos.com, Measurements Deamed Highly Reliable But Not Guaranteed.



Disclaimer: Sizes and Dimensions are Approximate, Actual May Vary.



Taylor Haas

303-665-7368

taylorh@coloradorpm.com

<https://www.coloradorpm.com/available-rental-properties-denver>



Scan code
for more
property
details

