

Great Location!!!



Condominium 975 SQFT 2 Beds 2 Baths

PROPERTY DETAILS

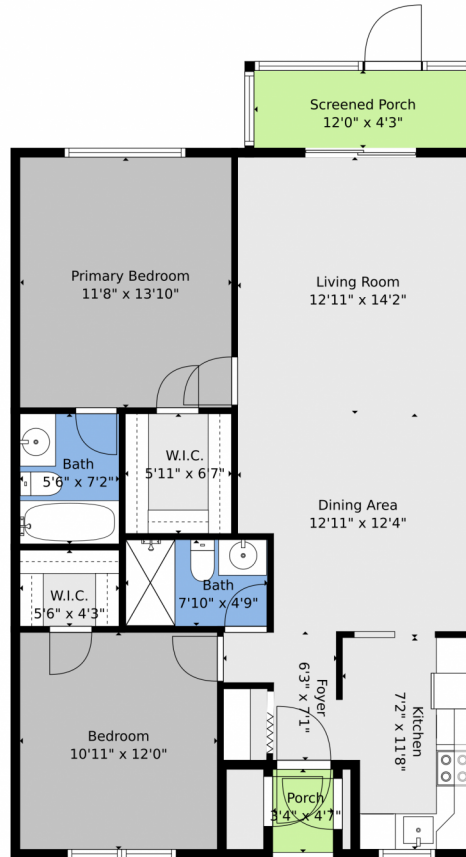
Amazing Corner Location!! This charming corner unit is the perfect place to call home. Lovely view of the the river and all the beautiful vegetation in the backyard, wonderfully private, feels like a Villa, and there is a brand new community BBQ very close to the back door. The Kitchen boasts a 2024 sink, Oven/Stove, Microwave and Washer/Dryer in one machine, Smart Thermostat installed for the A/C. Lovely Laminate flooring and new LVP flooring in the second bedroom and the primary bathroom. Easy access to Wilton Drive and Downtown Ft. Lauderdale. Corner Unit offers amazing privacy and an extra window! Great Association, up to date on all certifications and inspections, they also have reserves.



**Susan Markowitz Lewis**  
954-494-4960  
slewis512@aol.com



1785 North Andrews Square, Fort Lauderdale, FL 33311 – Main



**TOTAL: 928 sq. ft**  
FLOOR 1: 928 sq. ft  
EXCLUDED AREAS: SCREENED PORCH: 52 sq. ft, PORCH: 15 sq. ft  
WALLS: 87 sq. ft

Floor Plan Created By V1photos.com, Measurements Deamed Highly Reliable But Not Guaranteed.



Disclaimer: Sizes and Dimensions are Approximate, Actual May Vary.



**Susan Markowitz Lewis**  
954-494-4960  
slewis512@aol.com



Scan code for more property details

