



Single Family



2000 SQFT

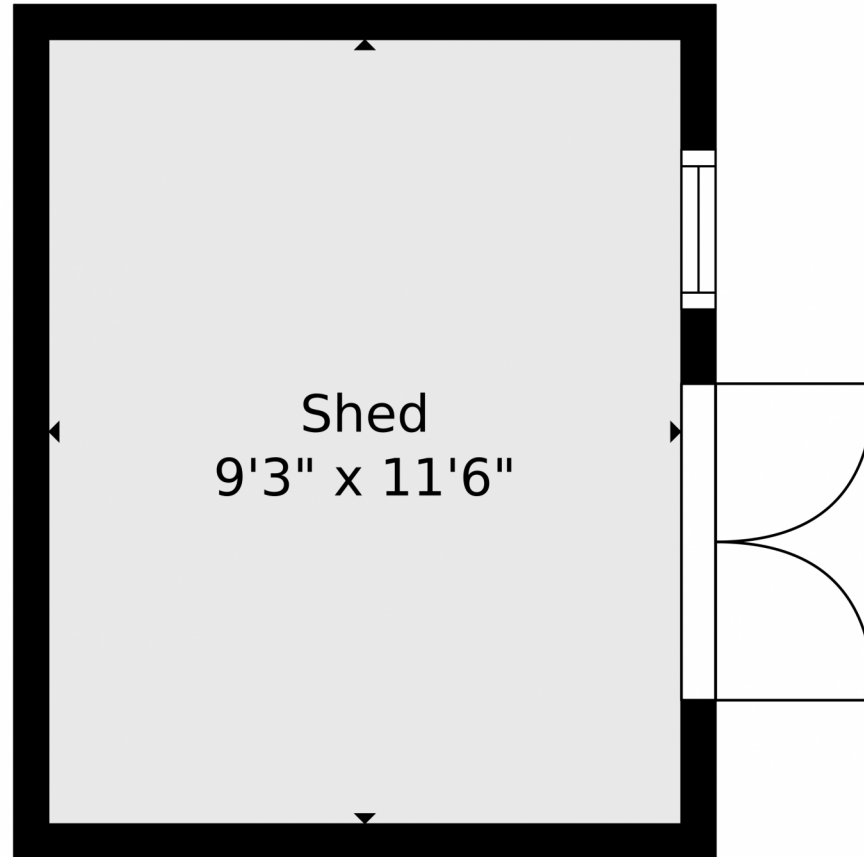


Victoria Merchant
303-328-8800
vmerchant@kw.com



Scan code
for more
property
details





TOTAL: 2354 sq. ft
BELOW GROUND: 0 sq. ft, FLOOR 2: 0 sq. ft, FLOOR 3: 0 sq. ft, FLOOR 4: 1177 sq. ft, FLOOR 5: 1177 sq. ft
EXCLUDED AREAS: SHED: 421 sq. ft, GARAGE: 393 sq. ft, COVERED DECK: 676 sq. ft,
PORCH: 171 sq. ft, WALLS: 252 sq. ft

Floor Plan Created By V1photos.com, Measurements Deamed Highly Reliable But Not Guaranteed.



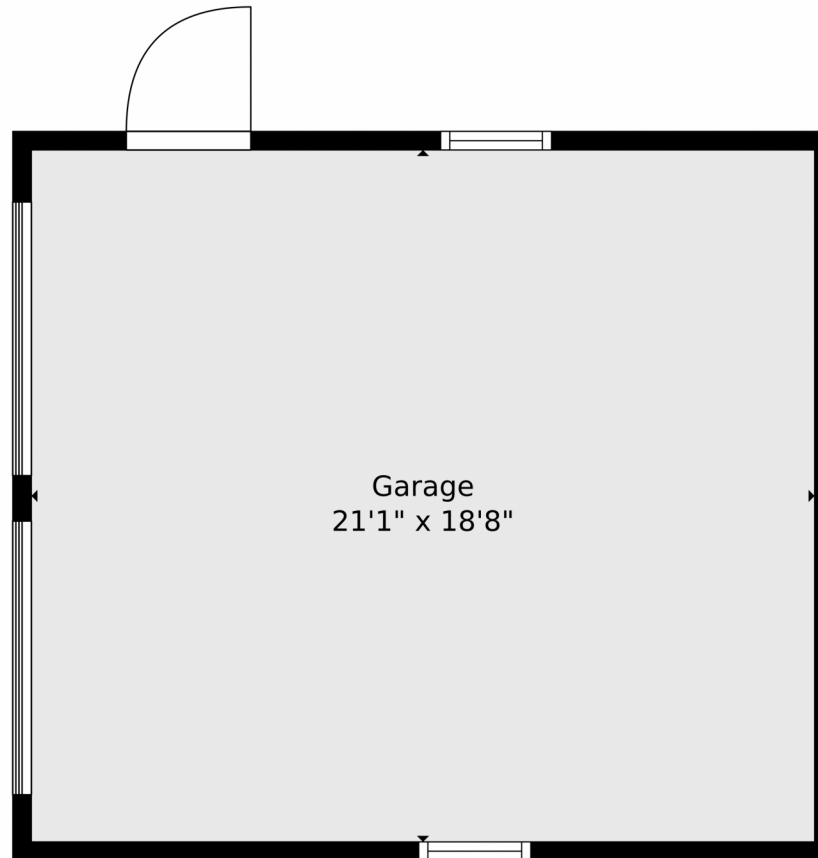
Disclaimer: Sizes and Dimensions are Approximate, Actual May Vary.



Victoria Merchant
303-328-8800
vmerchant@kw.com



11908 Black Hawk Dr., Conifer, CO 80433 — Detached Garage



TOTAL: 2354 sq. ft
BELOW GROUND: 0 sq. ft, FLOOR 2: 0 sq. ft, FLOOR 3: 0 sq. ft, FLOOR 4: 1177 sq. ft, FLOOR 5: 1177 sq. ft
EXCLUDED AREAS: SHED: 421 sq. ft, GARAGE: 393 sq. ft, COVERED DECK: 676 sq. ft,
PORCH: 171 sq. ft, WALLS: 252 sq. ft

Floor Plan Created By V1photos.com, Measurements Deamed Highly Reliable But Not Guaranteed.



Disclaimer: Sizes and Dimensions are Approximate, Actual May Vary.



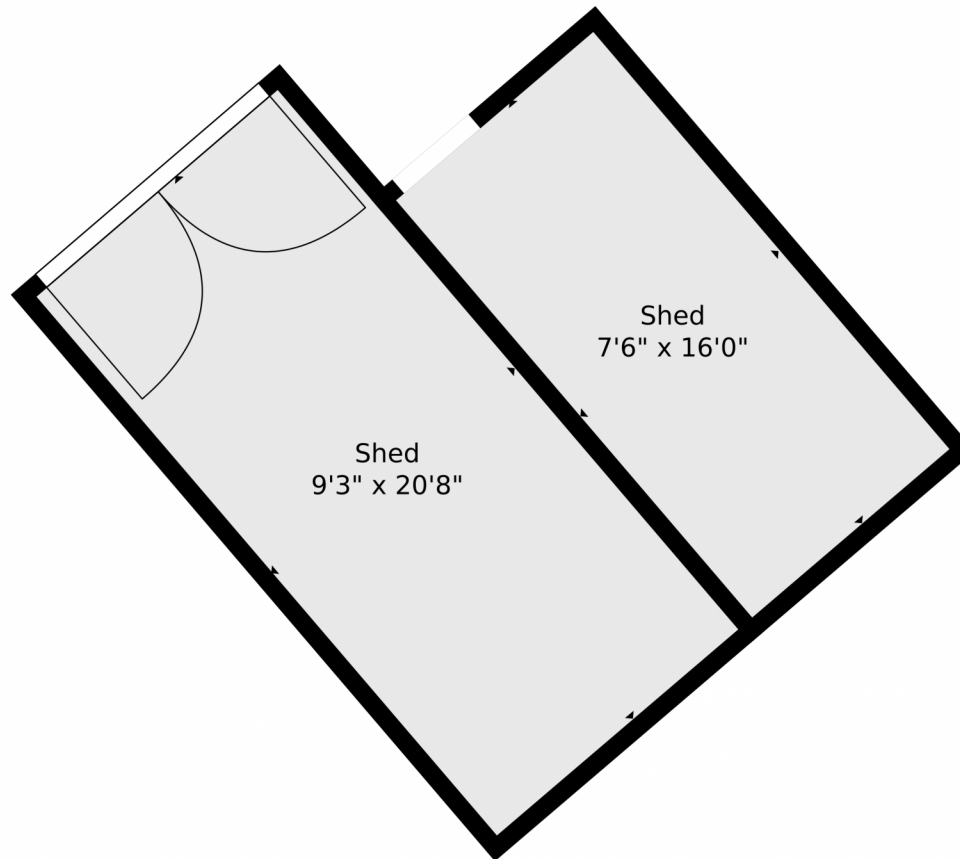
Victoria Merchant
303-328-8800
vmerchant@kw.com



Scan code
for more
property
details



11908 Black Hawk Dr., Conifer, CO 80433 — Detached Garage



TOTAL: 2354 sq. ft
BELOW GROUND: 0 sq. ft, FLOOR 2: 0 sq. ft, FLOOR 3: 0 sq. ft, FLOOR 4: 1177 sq. ft, FLOOR 5: 1177 sq. ft
EXCLUDED AREAS: SHED: 421 sq. ft, GARAGE: 393 sq. ft, COVERED DECK: 676 sq. ft,
PORCH: 171 sq. ft, WALLS: 252 sq. ft

Floor Plan Created By V1photos.com, Measurements Deamed Highly Reliable But Not Guaranteed.



Disclaimer: Sizes and Dimensions are Approximate, Actual May Vary.



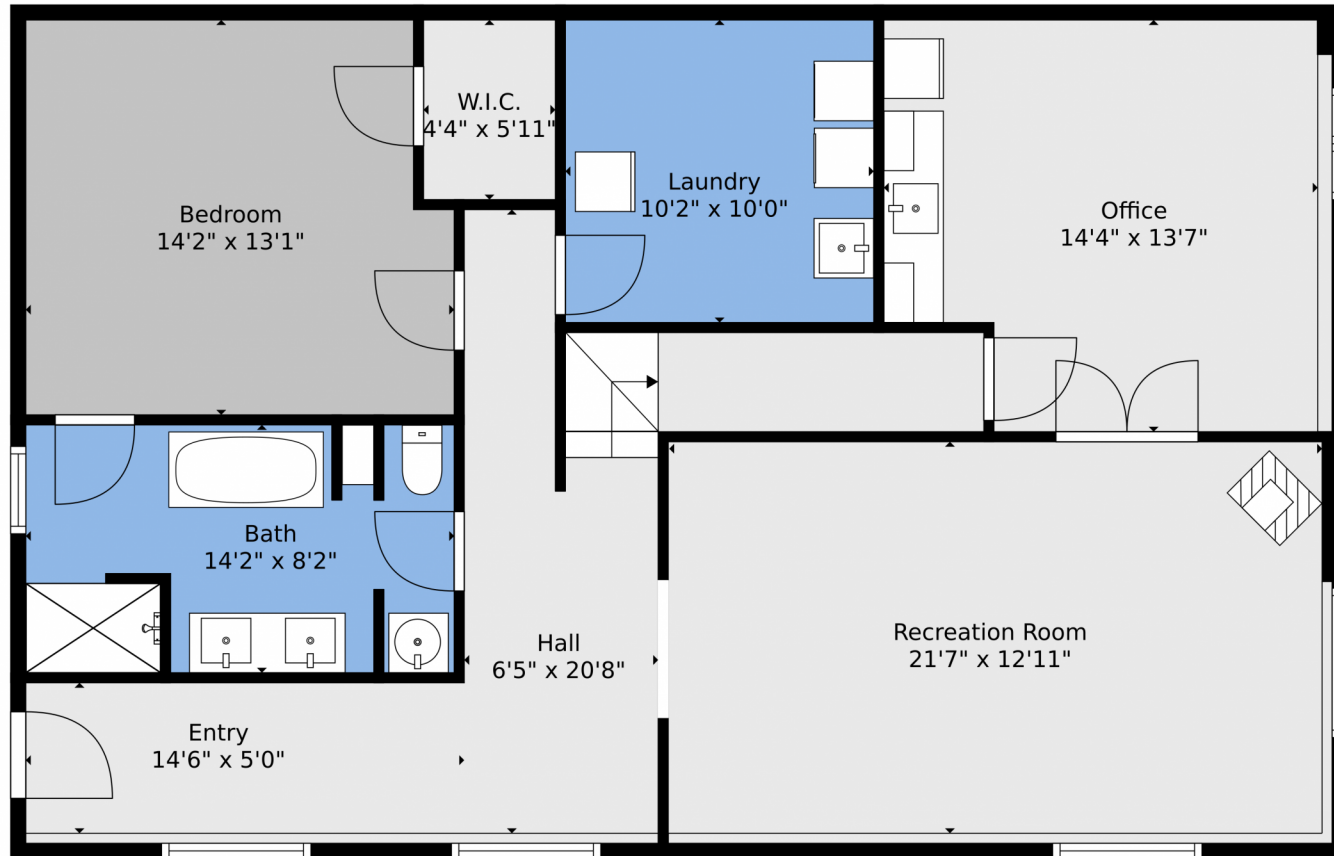
Victoria Merchant
303-328-8800
vmerchant@kw.com



Scan code
for more
property
details



11908 Black Hawk Dr., Conifer, CO 80433 – Lower Level



TOTAL: 2354 sq. ft
BELOW GROUND: 0 sq. ft, FLOOR 2: 0 sq. ft, FLOOR 3: 0 sq. ft, FLOOR 4: 1177 sq. ft, FLOOR 5: 1177 sq. ft
EXCLUDED AREAS: SHED: 421 sq. ft, GARAGE: 393 sq. ft, COVERED DECK: 676 sq. ft,
PORCH: 171 sq. ft, WALLS: 252 sq. ft

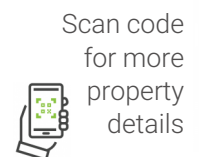
Floor Plan Created By V1photos.com, Measurements Deamed Highly Reliable But Not Guaranteed.



Disclaimer: Sizes and Dimensions are Approximate, Actual May Vary.



Victoria Merchant
303-328-8800
vmerchant@kw.com



11908 Black Hawk Dr., Conifer, CO 80433 — Main



TOTAL: 2354 sq. ft
BELOW GROUND: 0 sq. ft, FLOOR 2: 0 sq. ft, FLOOR 3: 0 sq. ft, FLOOR 4: 1177 sq. ft, FLOOR 5: 1177 sq. ft
EXCLUDED AREAS: SHED: 421 sq. ft, GARAGE: 393 sq. ft, COVERED DECK: 676 sq. ft,
PORCH: 171 sq. ft, WALLS: 252 sq. ft

Floor Plan Created By V1photos.com, Measurements Deamed Highly Reliable But Not Guaranteed.



Disclaimer: Sizes and Dimensions are Approximate, Actual May Vary.



Victoria Merchant
303-328-8800
vmerchant@kw.com



11908 Black Hawk Dr., Conifer, CO 80433 — All Levels



TOTAL: 2354 sq. ft
 BELOW GROUND: 0 sq. ft, FLOOR 2: 0 sq. ft, FLOOR 3: 0 sq. ft, FLOOR 4: 1177 sq. ft, FLOOR 5: 1177 sq. ft
 EXCLUDED AREAS: SHED: 421 sq. ft, GARAGE: 393 sq. ft, COVERED DECK: 676 sq. ft,
 PORCH: 171 sq. ft, WALLS: 252 sq. ft

Floor Plan Created By V1photos.com, Measurements Deamed Highly Reliable But Not Guaranteed.



Disclaimer: Sizes and Dimensions are Approximate, Actual May Vary.



Victoria Merchant
 303-328-8800
 vmerchant@kw.com



Scan code
 for more
 property
 details

