



Single Family



3180 SQFT



3 Beds



2 Baths



1 Car



0.19 Acre



Julio Quezada

720-882-3970

julio@thepristineproperties.com



Scan code
for more
property
details



1345 Northwestern Road, Longmont, CO 80503 — Main



TOTAL: 1536 sq. ft
BELOW GROUND: 0 sq. ft, FLOOR 2: 1536 sq. ft
EXCLUDED AREAS: ROOM: 729 sq. ft, UTILITY: 221 sq. ft, HALL: 206 sq. ft,
BEDROOM: 340 sq. ft, GARAGE: 274 sq. ft, SCREENED PORCH: 283 sq. ft,
PORCH: 100 sq. ft, WALLS: 210 sq. ft

Floor Plan Created By V1photos.com, Measurements Deamed Highly Reliable But Not Guaranteed.



Disclaimer: Sizes and Dimensions are Approximate, Actual May Vary.



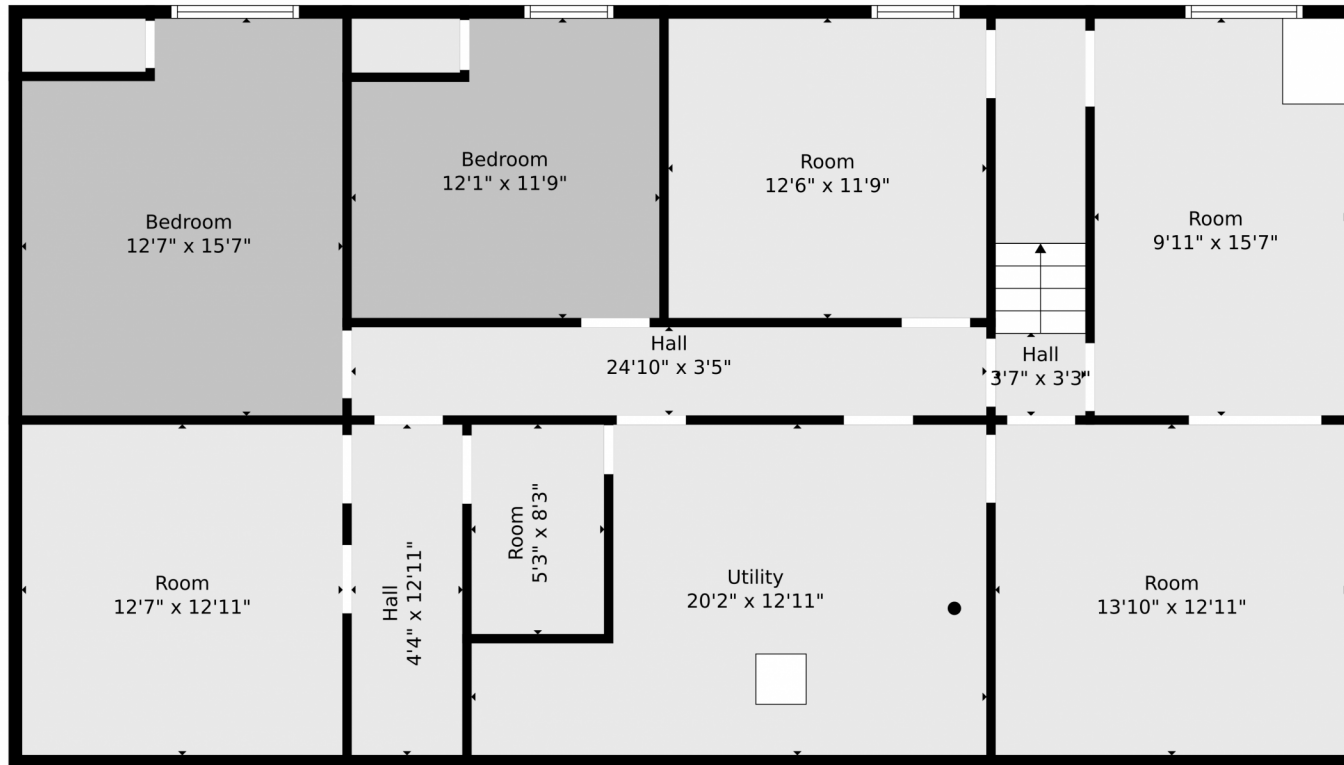
Julio Quezada
720-882-3970
julio@thepristineproperties.com



Scan code
for more
property
details



1345 Northwestern Road, Longmont, CO 80503 — Basement



TOTAL: 1536 sq. ft
BELOW GROUND: 0 sq. ft, FLOOR 2: 1536 sq. ft
EXCLUDED AREAS: ROOM: 729 sq. ft, UTILITY: 221 sq. ft, HALL: 206 sq. ft,
BEDROOM: 340 sq. ft, GARAGE: 274 sq. ft, SCREENED PORCH: 283 sq. ft,
PORCH: 100 sq. ft, WALLS: 210 sq. ft

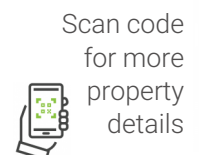
Floor Plan Created By V1photos.com, Measurements Deamed Highly Reliable But Not Guaranteed.



Disclaimer: Sizes and Dimensions are Approximate, Actual May Vary.



Julio Quezada
720-882-3970
julio@thepristineproperties.com



Scan code
for more
property
details



1345 Northwestern Road, Longmont, CO 80503 — All Levels



TOTAL: 1536 sq. ft
 BELOW GROUND: 0 sq. ft, FLOOR 2: 1536 sq. ft
 EXCLUDED AREAS: ROOM: 729 sq. ft, UTILITY: 221 sq. ft, HALL: 206 sq. ft,
 BEDROOM: 340 sq. ft, GARAGE: 274 sq. ft, SCREENED PORCH: 283 sq. ft,
 PORCH: 100 sq. ft, WALLS: 210 sq. ft

Floor Plan Created By V1photos.com, Measurements Deamed Highly Reliable But Not Guaranteed.



Disclaimer: Sizes and Dimensions are Approximate, Actual May Vary.



Julio Quezada
 720-882-3970
julio@thepristineproperties.com



Scan code
 for more
 property
 details

