

Single Family



1700 SQFT



3 Beds



2/1 Baths



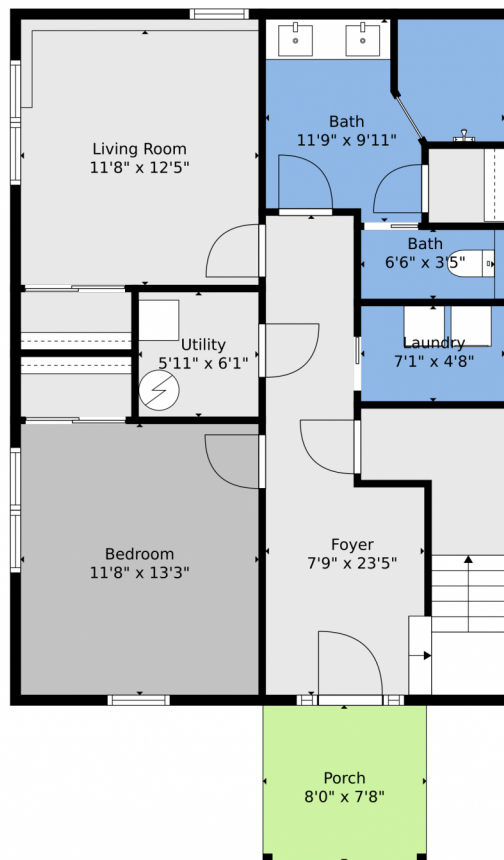
Victoria Merchant
303-328-8800
vmerchant@kw.com



Scan code
for more
property
details



116 Goldfinch Place, Alma, CO 80420 — Lower Level



TOTAL: 1530 sq. ft
BELOW GROUND: 747 sq. ft, FLOOR 2: 783 sq. ft
EXCLUDED AREAS: UTILITY: 36 sq. ft, PORCH: 61 sq. ft, DECK: 431 sq. ft,
WALLS: 115 sq. ft

Floor Plan Created By V1photos.com, Measurements Deamed Highly Reliable But Not Guaranteed.



Disclaimer: Sizes and Dimensions are Approximate, Actual May Vary.



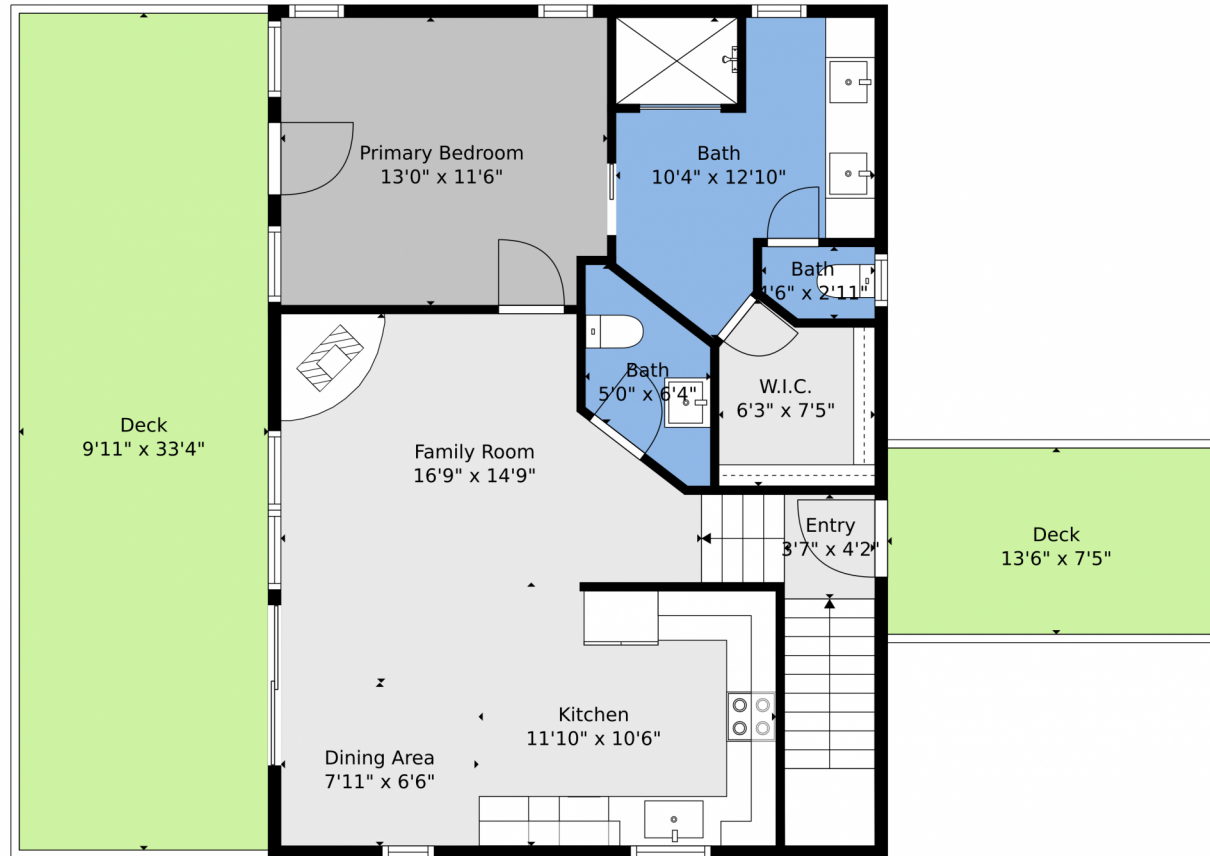
Victoria Merchant
303-328-8800
vmerchant@kw.com



Scan code
for more
property
details



116 Goldfinch Place, Alma, CO 80420 — Main



TOTAL: 1530 sq. ft
BELOW GROUND: 747 sq. ft, FLOOR 2: 783 sq. ft
EXCLUDED AREAS: UTILITY: 36 sq. ft, PORCH: 61 sq. ft, DECK: 431 sq. ft,
WALLS: 115 sq. ft

Floor Plan Created By V1photos.com, Measurements Deamed Highly Reliable But Not Guaranteed.



Disclaimer: Sizes and Dimensions are Approximate, Actual May Vary.



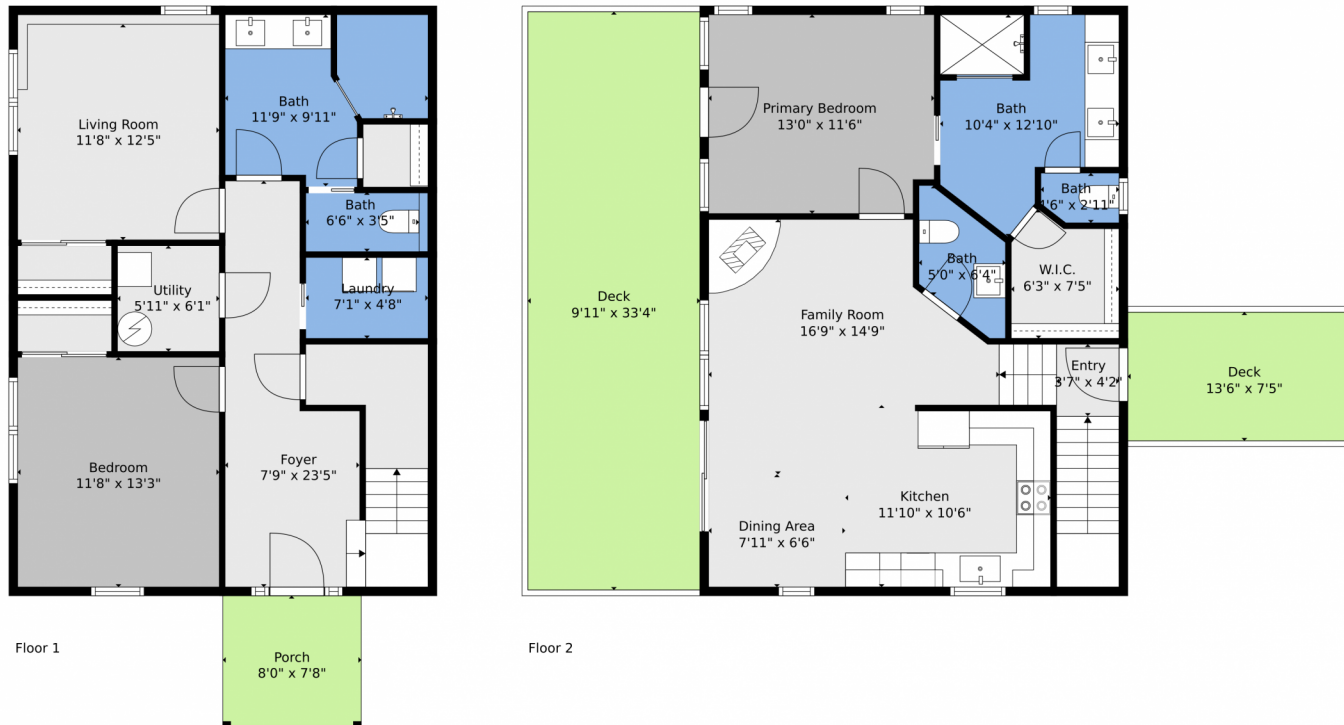
Victoria Merchant
303-328-8800
vmerchant@kw.com



Scan code
for more
property
details



116 Goldfinch Place, Alma, CO 80420 — All Levels



TOTAL: 1530 sq. ft
BELOW GROUND: 747 sq. ft, FLOOR 2: 783 sq. ft
EXCLUDED AREAS: UTILITY: 36 sq. ft, PORCH: 61 sq. ft, DECK: 431 sq. ft,
WALLS: 115 sq. ft

Floor Plan Created By V1photos.com, Measurements Deamed Highly Reliable But Not Guaranteed.



Disclaimer: Sizes and Dimensions are Approximate, Actual May Vary.



Victoria Merchant
303-328-8800
vmerchant@kw.com



Scan code
for more
property
details

