

2915 Depew Street
Wheat Ridge, CO 80214



 Single Family  2144 SQFT



Will Story
720-975-7227
Will@StoryHomeGroup.com



2915 Depew Street, Wheat Ridge, CO 80214 — Main



TOTAL: 1901 sq. ft
BELOW GROUND: 935 sq. ft, FLOOR 2: 966 sq. ft
EXCLUDED AREAS: GARAGE: 550 sq. ft, PORCH: 93 sq. ft, COVERED PATIO: 240 sq. ft,
PATIO: 108 sq. ft, WALLS: 193 sq. ft

Floor Plan Created By V1photos.com, Measurements Deamed Highly Reliable But Not Guaranteed.



Disclaimer: Sizes and Dimensions are Approximate, Actual May Vary.



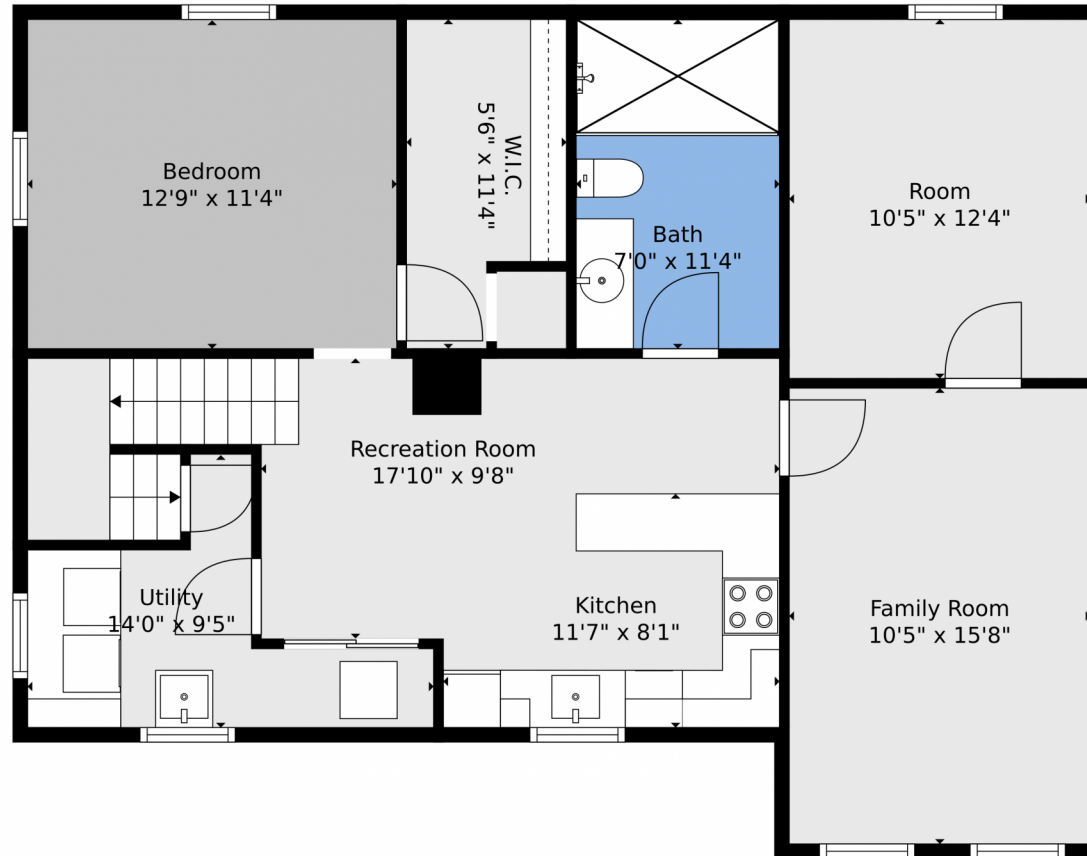
Will Story
720-975-7227
Will@StoryHomeGroup.com



Scan code
for more
property
details



2915 Depew Street, Wheat Ridge, CO 80214 — Lower Level



TOTAL: 1901 sq. ft
BELOW GROUND: 935 sq. ft, FLOOR 2: 966 sq. ft
EXCLUDED AREAS: GARAGE: 550 sq. ft, PORCH: 93 sq. ft, COVERED PATIO: 240 sq. ft,
PATIO: 108 sq. ft, WALLS: 193 sq. ft

Floor Plan Created By V1photos.com, Measurements Deamed Highly Reliable But Not Guaranteed.



Disclaimer: Sizes and Dimensions are Approximate, Actual May Vary.



Will Story
720-975-7227
Will@StoryHomeGroup.com



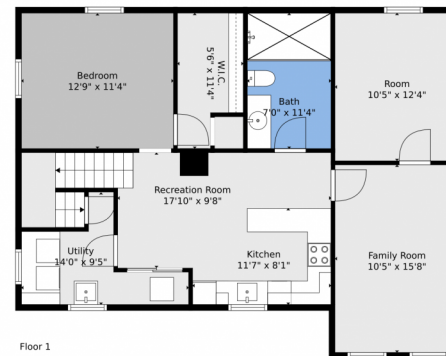
Scan code
for more
property
details



2915 Depew Street, Wheat Ridge, CO 80214 — All Levels



Floor 2



Floor 1

TOTAL: 1901 sq. ft
BELOW GROUND: 935 sq. ft, FLOOR 2: 966 sq. ft
EXCLUDED AREAS: GARAGE: 550 sq. ft, PORCH: 93 sq. ft, COVERED PATIO: 240 sq. ft,
PATIO: 108 sq. ft, WALLS: 193 sq. ft

Floor Plan Created By V1photos.com, Measurements Deamed Highly Reliable But Not Guaranteed.



Disclaimer: Sizes and Dimensions are Approximate, Actual May Vary.



Will Story
720-975-7227
Will@StoryHomeGroup.com



Scan code
for more
property
details

