

Townhouse



1301 SQFT



2 Beds



2 Baths



1 Car



0.05 Acre

PROPERTY DETAILS

Located in the Heart of Evergreen!



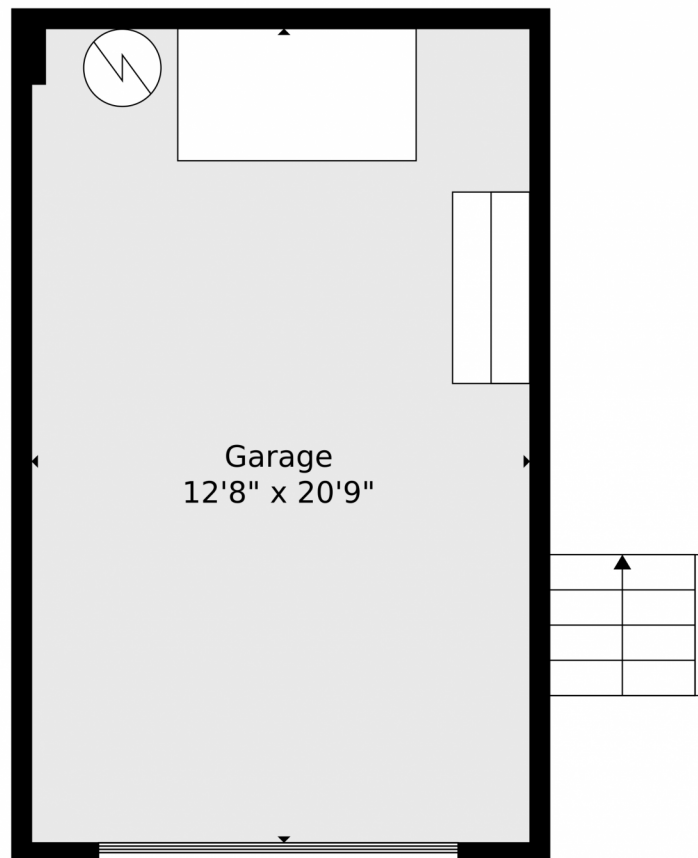
Peg Schroeder
303-885-4404
peg@tuppersteam.com



Scan code
for more
property
details



3661 Joyful Way Unit D, Evergreen, CO 80439 — Detached Garage



TOTAL: 1177 sq. ft
BELOW GROUND: 0 sq. ft, FLOOR 2: 765 sq. ft, FLOOR 3: 412 sq. ft
EXCLUDED AREAS: GARAGE: 263 sq. ft, DECK: 227 sq. ft, PORCH: 63 sq. ft,
FIREPLACE: 9 sq. ft, OPEN TO BELOW: 239 sq. ft, WALLS: 123 sq. ft

Floor Plan Created By V1photos.com, Measurements Deamed Highly Reliable But Not Guaranteed.



Disclaimer: Sizes and Dimensions are Approximate, Actual May Vary.



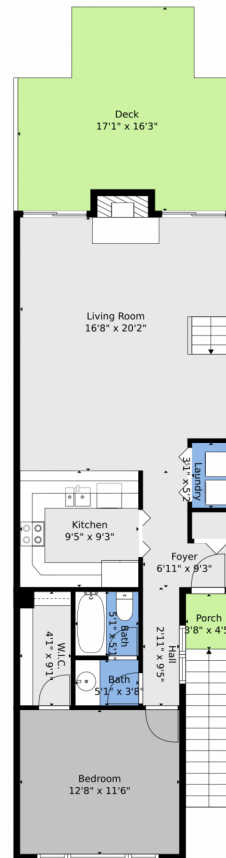
Peg Schroeder
303-885-4404
peg@tuppersteam.com



Scan code
for more
property
details



3661 Joyful Way Unit D, Evergreen, CO 80439 — Main



TOTAL: 1177 sq. ft

BELOW GROUND: 0 sq. ft, FLOOR 2: 765 sq. ft, FLOOR 3: 412 sq. ft
EXCLUDED AREAS: GARAGE: 263 sq. ft, DECK: 227 sq. ft, PORCH: 63 sq. ft,
FIREPLACE: 9 sq. ft, OPEN TO BELOW: 239 sq. ft, WALLS: 123 sq. ft

Floor Plan Created By V1photos.com, Measurements Deamed Highly Reliable But Not Guaranteed.



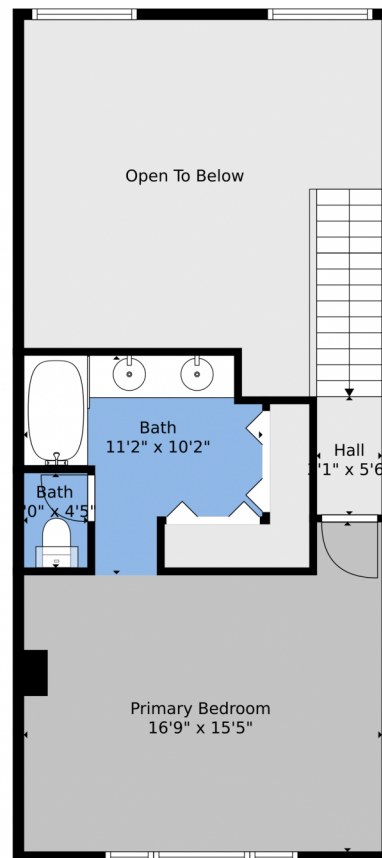
Disclaimer: Sizes and Dimensions are Approximate, Actual May Vary.



Peg Schroeder
303-885-4404
peg@tuppersteam.com



3661 Joyful Way Unit D, Evergreen, CO 80439 — 2nd Level



TOTAL: 1177 sq. ft

BELOW GROUND: 0 sq. ft, FLOOR 2: 765 sq. ft, FLOOR 3: 412 sq. ft
EXCLUDED AREAS: GARAGE: 263 sq. ft, DECK: 227 sq. ft, PORCH: 63 sq. ft,
FIREPLACE: 9 sq. ft, OPEN TO BELOW: 239 sq. ft, WALLS: 123 sq. ft

Floor Plan Created By V1photos.com, Measurements Deamed Highly Reliable But Not Guaranteed.



Disclaimer: Sizes and Dimensions are Approximate, Actual May Vary.



Peg Schroeder
303-885-4404
peg@tuppersteam.com



Scan code
for more
property
details



3661 Joyful Way Unit D, Evergreen, CO 80439 — 3rd Level



TOTAL: 1177 sq. ft
BELOW GROUND: 0 sq. ft, FLOOR 2: 765 sq. ft, FLOOR 3: 412 sq. ft
EXCLUDED AREAS: GARAGE: 263 sq. ft, DECK: 227 sq. ft, PORCH: 63 sq. ft,
FIREPLACE: 9 sq. ft, OPEN TO BELOW: 239 sq. ft, WALLS: 123 sq. ft

Floor Plan Created By V1photos.com, Measurements Deamed Highly Reliable But Not Guaranteed.



Disclaimer: Sizes and Dimensions are Approximate, Actual May Vary.



Peg Schroeder
303-885-4404
peg@tuppersteam.com



Scan code
for more
property
details

