



9250 Rifle Street
Commerce City, CO 80022
COMMUNITY: Buffalo Highlands

MLS # 5631478
PRICE \$535,000



Single Family



2753 SQFT



4 Beds



2/1 Baths



2 Car



0.14 Acre

PROPERTY DETAILS

Welcome to this beautiful 2019 home in Buffalo Highlands, featuring 4 bedrooms and 2.5 bathrooms. The open floor plan includes a spacious loft and a flexible space ideal for a home office or playroom. Upgrades like engineered hardwood flooring and window blinds enhance the style. The chef's kitchen boasts granite countertops, stainless steel appliances, and ample cabinet space. Enjoy outdoor living on the composite deck. Smart home features include a doorbell, garage opener, and sprinkler system. Additional perks are a tankless water heater, two-car garage, and a builder warranty. Buffalo Highlands offers a Fit & Play park and access to the Rocky Mountain Arsenal National Wildlife Refuge, all close to Denver International Airport, dining, and shopping.



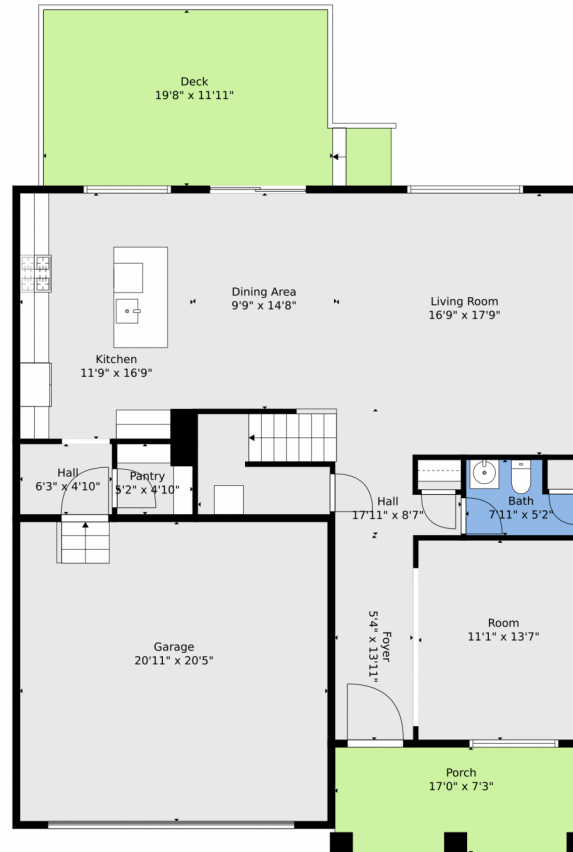
Shelby Fifer
303-249-9242
shelbyafifer@gmail.com



Scan code
for more
property
details



9250 Rifle Street, Commerce City, CO 80022 — Main



TOTAL: 2635 sq. ft
FLOOR 1: 1096 sq. ft, FLOOR 2: 1539 sq. ft
EXCLUDED AREAS: GARAGE: 427 sq. ft, PORCH: 123 sq. ft, DECK: 249 sq. ft,
WALLS: 180 sq. ft

Floor Plan Created By V1photos.com, Measurements Deamed Highly Reliable But Not Guaranteed.



Disclaimer: Sizes and Dimensions are Approximate, Actual May Vary.



Shelby Fifer
303-249-9242
shelbyafifer@gmail.com



Scan code
for more
property
details



9250 Rifle Street, Commerce City, CO 80022 – 2nd Level



TOTAL: 2635 sq. ft
FLOOR 1: 1096 sq. ft, FLOOR 2: 1539 sq. ft
EXCLUDED AREAS: GARAGE: 427 sq. ft, PORCH: 123 sq. ft, DECK: 249 sq. ft,
WALLS: 180 sq. ft

Floor Plan Created By V1photos.com, Measurements Deamed Highly Reliable But Not Guaranteed.



Disclaimer: Sizes and Dimensions are Approximate, Actual May Vary.



Shelby Fifer
303-249-9242
shelbyafifer@gmail.com



Scan code
for more
property
details



9250 Rifle Street, Commerce City, CO 80022 — All Levels



TOTAL: 2635 sq. ft
 FLOOR 1: 1096 sq. ft, FLOOR 2: 1539 sq. ft
 EXCLUDED AREAS: GARAGE: 427 sq. ft, PORCH: 123 sq. ft, DECK: 249 sq. ft,
 WALLS: 180 sq. ft

Floor Plan Created By V1photos.com, Measurements Deamed Highly Reliable But Not Guaranteed.



Disclaimer: Sizes and Dimensions are Approximate, Actual May Vary.



Shelby Fifer
 303-249-9242
 shelbyafifer@gmail.com

