



10228 Fort Worth Court
Parker, CO 80134
COMMUNITY: Sierra Ridge



Single Family



4508 SQFT



4 Beds



3 Baths



3 Car



0.23 Acre



Rich Segrist
720-208-6495
rich@segristproperties.com



Scan code
for more
property
details



10228 Fort Worth Court, Parker, CO 80134 — Main



TOTAL: 3530 sq. ft
BELOW GROUND: 1355 sq. ft, FLOOR 2: 2175 sq. ft
EXCLUDED AREAS: STORAGE: 707 sq. ft, GARAGE: 636 sq. ft, PATIO: 550 sq. ft,
PORCH: 141 sq. ft, WALLS: 260 sq. ft

Floor Plan Created By V1photos.com, Measurements Deamed Highly Reliable But Not Guaranteed.



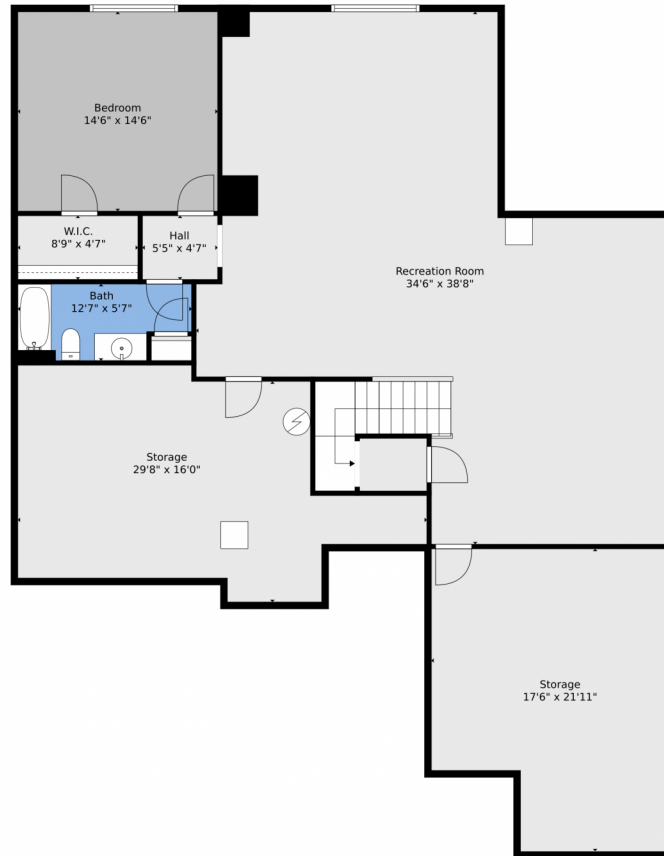
Disclaimer: Sizes and Dimensions are Approximate, Actual May Vary.



Rich Segrist
720-208-6495
rich@segristproperties.com



10228 Fort Worth Court, Parker, CO 80134 — Lower Level



TOTAL: 3530 sq. ft
BELOW GROUND: 1355 sq. ft, FLOOR 2: 2175 sq. ft
EXCLUDED AREAS: STORAGE: 707 sq. ft, GARAGE: 636 sq. ft, PATIO: 550 sq. ft,
PORCH: 141 sq. ft, WALLS: 260 sq. ft

Floor Plan Created By V1photos.com, Measurements Deamed Highly Reliable But Not Guaranteed.

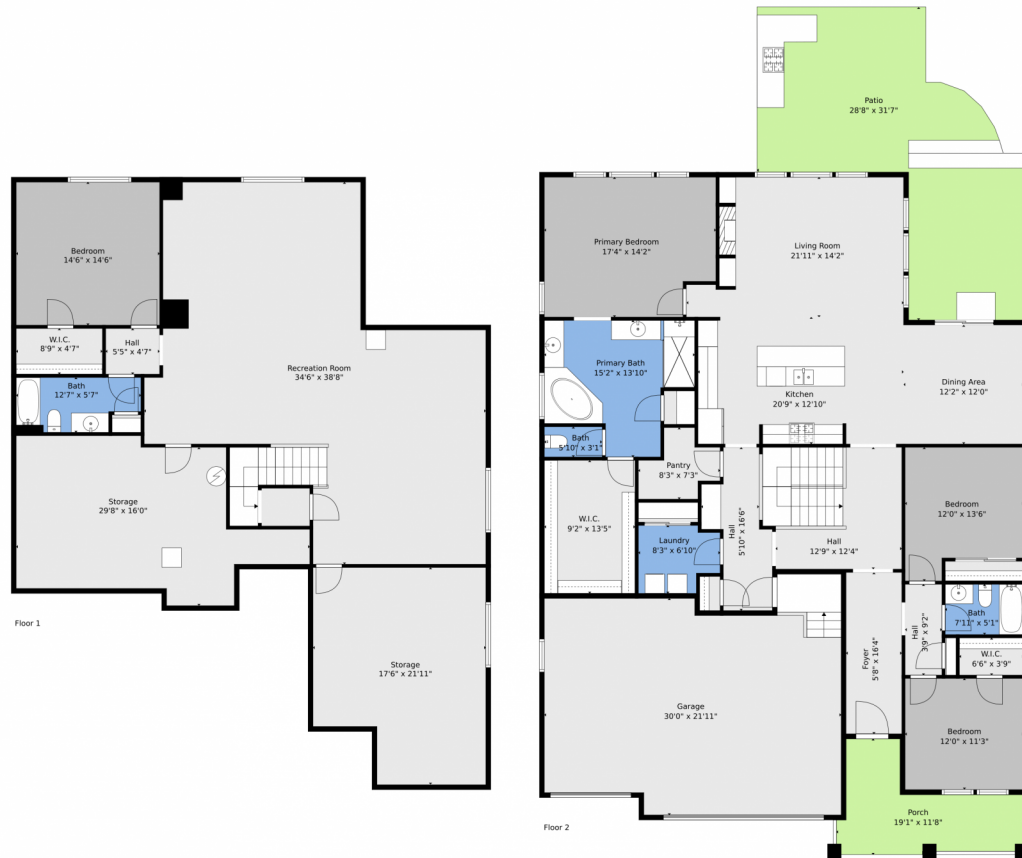
Disclaimer: Sizes and Dimensions are Approximate, Actual May Vary.



Rich Segrist
720-208-6495
rich@segristproperties.com



10228 Fort Worth Court, Parker, CO 80134 — All Levels



TOTAL: 3530 sq. ft
BELOW GROUND: 1355 sq. ft, FLOOR 2: 2175 sq. ft
EXCLUDED AREAS: STORAGE: 707 sq. ft, GARAGE: 636 sq. ft, PATIO: 550 sq. ft,
PORCH: 141 sq. ft, WALLS: 260 sq. ft

Floor Plan Created By V1photos.com, Measurements Deamed Highly Reliable But Not Guaranteed.



Disclaimer: Sizes and Dimensions are Approximate, Actual May Vary.



Rich Segrist
720-208-6495
rich@segristproperties.com

