
 Single Family

 1197 SQFT

 3 Beds

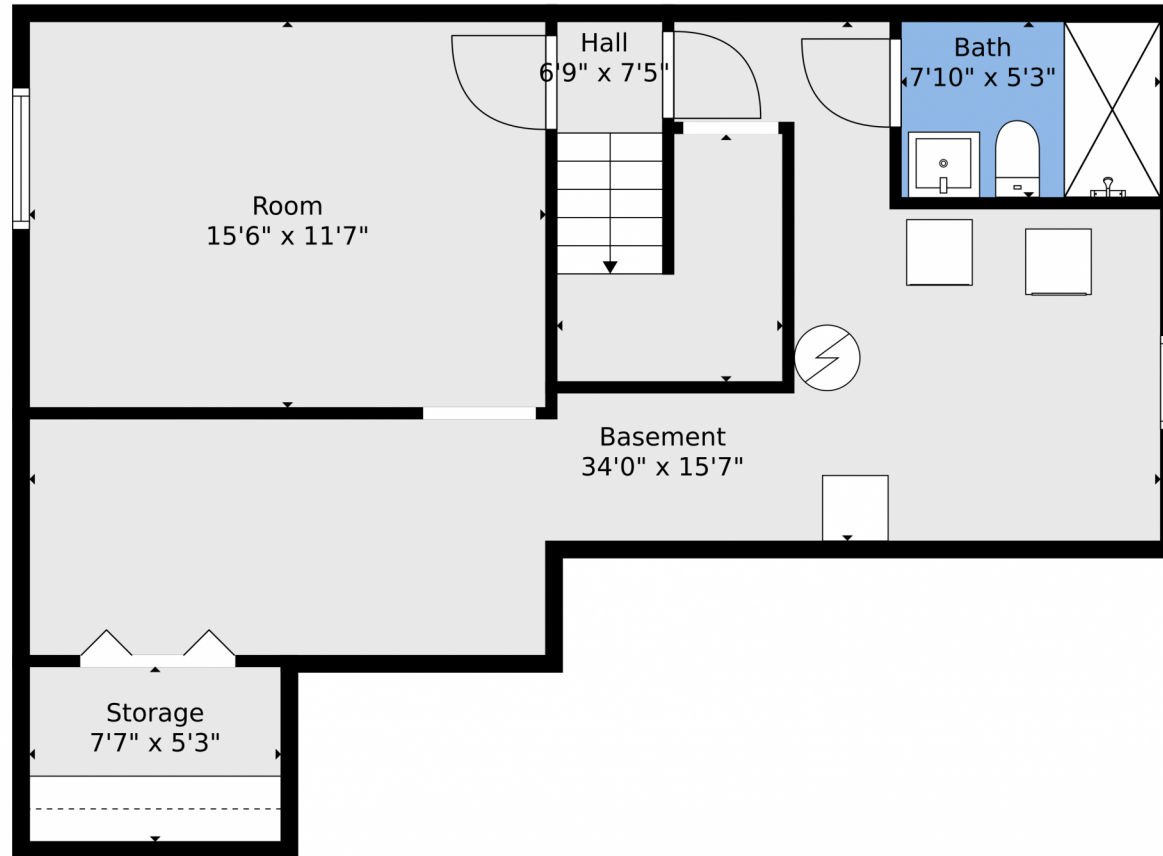
 3 Baths



Taylor Haas
303-665-7368
taylorh@coloradorpm.com
<https://www.coloradorpm.com/available-rental-properties-denver>



19572 East 46th Avenue, Denver, CO 80249 – lower level



TOTAL: 1682 sq. ft
BELOW GROUND: 303 sq. ft, FLOOR 2: 1104 sq. ft, FLOOR 3: 275 sq. ft
EXCLUDED AREAS: STORAGE: 42 sq. ft, BASEMENT: 280 sq. ft, GARAGE: 375 sq. ft,
OPEN TO BELOW: 394 sq. ft, WALLS: 231 sq. ft
Floor Plan Created By V1photos.com, Measurements Deamed Highly Reliable But Not Guaranteed.



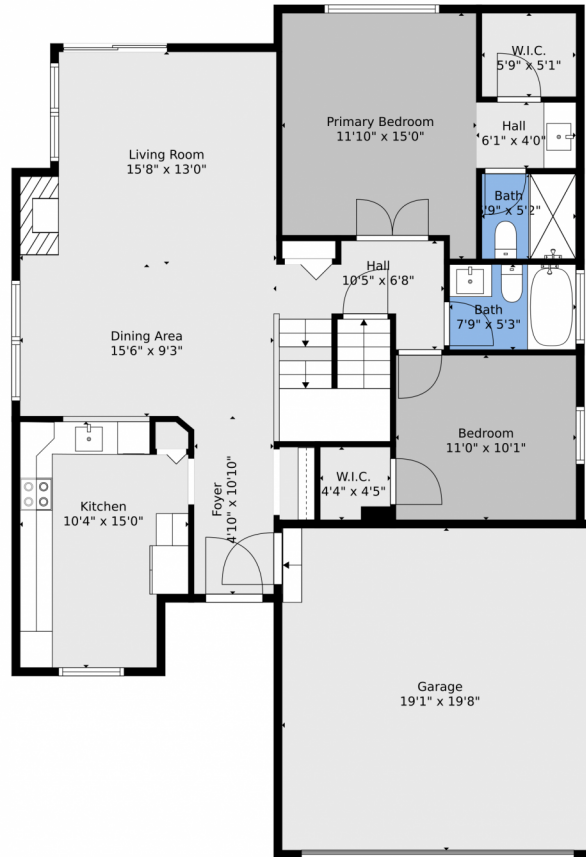
Disclaimer: Sizes and Dimensions are Approximate, Actual May Vary.



Taylor Haas
303-665-7368
taylorh@coloradorpm.com
<https://www.coloradorpm.com/available-rental-properties-denver>



19572 East 46th Avenue, Denver, CO 80249 — main level



TOTAL: 1682 sq. ft
BELOW GROUND: 303 sq. ft, FLOOR 2: 1104 sq. ft, FLOOR 3: 275 sq. ft
EXCLUDED AREAS: STORAGE: 42 sq. ft, BASEMENT: 280 sq. ft, GARAGE: 375 sq. ft,
OPEN TO BELOW: 394 sq. ft, WALLS: 231 sq. ft

Floor Plan Created By V1photos.com, Measurements Deamed Highly Reliable But Not Guaranteed.



Disclaimer: Sizes and Dimensions are Approximate, Actual May Vary.



Taylor Haas

303-665-7368

taylorh@coloradorpm.com

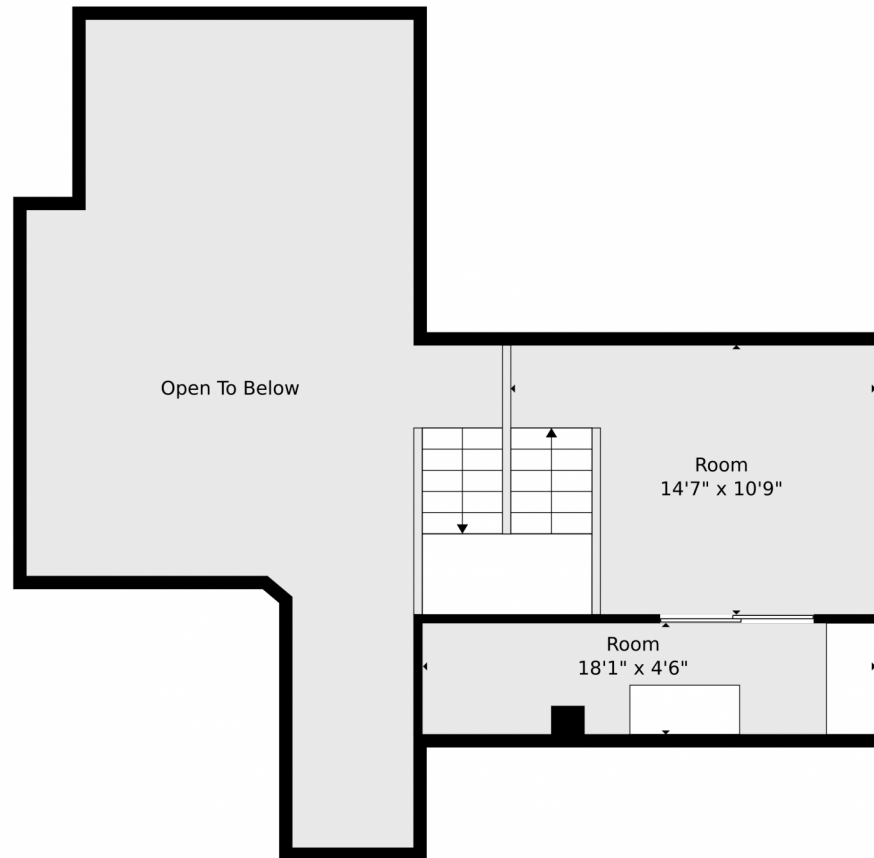
<https://www.coloradorpm.com/available-rental-properties-denver>



Scan code
for more
property
details



19572 East 46th Avenue, Denver, CO 80249 — second level



TOTAL: 1682 sq. ft
BELOW GROUND: 303 sq. ft, FLOOR 2: 1104 sq. ft, FLOOR 3: 275 sq. ft
EXCLUDED AREAS: STORAGE: 42 sq. ft, BASEMENT: 280 sq. ft, GARAGE: 375 sq. ft,
OPEN TO BELOW: 394 sq. ft, WALLS: 231 sq. ft

Floor Plan Created By V1photos.com, Measurements Deamed Highly Reliable But Not Guaranteed.



Disclaimer: Sizes and Dimensions are Approximate, Actual May Vary.



Taylor Haas

303-665-7368

taylorh@coloradorpm.com

<https://www.coloradorpm.com/available-rental-properties-denver>



Scan code
for more
property
details



19572 East 46th Avenue, Denver, CO 80249 — all levels



TOTAL: 1682 sq. ft
BELOW GROUND: 303 sq. ft, FLOOR 2: 1104 sq. ft, FLOOR 3: 275 sq. ft
EXCLUDED AREAS: STORAGE: 42 sq. ft, BASEMENT: 280 sq. ft, GARAGE: 375 sq. ft,
OPEN TO BELOW: 394 sq. ft, WALLS: 231 sq. ft

Floor Plan Created By V1photos.com, Measurements Deamed Highly Reliable But Not Guaranteed.



Disclaimer: Sizes and Dimensions are Approximate, Actual May Vary.



Taylor Haas

303-665-7368

taylorh@coloradorm.com

<https://www.coloradorm.com/available-rental-properties-denver>



Scan code
for more
property
details

