

1013 Compass Drive
Erie, CO 80516
COMMUNITY: Compass Flg 3

MLS # 6415446
PRICE \$1,500,000



 Single Family  5696 SQFT  5 Beds  5/1 Baths  4 Car  0.46 Acre

PROPERTY DETAILS

Experience Colorado living in this stunning ranch-style home with breathtaking Rocky Mountain views. Set on a prime lot, it combines elegance and comfort. The open-concept design features large windows that fill the space with light and mountain vistas. The kitchen boasts an induction cooktop, stainless appliances, and a spacious island connecting dining and living areas, perfect for entertaining or relaxing. The primary suite offers mountain views, a walk-in closet, and a luxurious five-piece bathroom. Two additional main-floor bedrooms provide flexible space. The finished basement includes a rec room, two bedrooms, a kitchenette, and storage. Enjoy the backyard with its unobstructed views, covered patio, fire pit, and water feature. With a four-car garage and access to trails and downtown Erie, this home offers a lifestyle you'll cherish. Schedule your private tour today.

Shawn Bandel
720-318-7639
shawn@goodliferealestatellc.com



1013 Compass Drive, Erie, CO 80516 — Main



TOTAL: 4383 sq. ft
BELOW GROUND: 1611 sq. ft, FLOOR 2: 2772 sq. ft
EXCLUDED AREAS: BASEMENT: 1101 sq. ft, GARAGE: 1037 sq. ft, PORCH: 109 sq. ft,
DECK: 391 sq. ft, COVERED PATIO: 204 sq. ft, PATIO: 232 sq. ft,
WALLS: 301 sq. ft

Floor Plan Created By V1photos.com, Measurements Deamed Highly Reliable But Not Guaranteed.



Disclaimer: Sizes and Dimensions are Approximate, Actual May Vary.

Shawn Bandel
720-318-7639
shawn@goodliferealestatellc.com



1013 Compass Drive, Erie, CO 80516 — Lower Level



TOTAL: 4383 sq. ft
BELOW GROUND: 1611 sq. ft, FLOOR 2: 2772 sq. ft
EXCLUDED AREAS: BASEMENT: 1101 sq. ft, GARAGE: 1037 sq. ft, PORCH: 109 sq. ft,
DECK: 391 sq. ft, COVERED PATIO: 204 sq. ft, PATIO: 232 sq. ft,
WALLS: 301 sq. ft

Floor Plan Created By V1photos.com, Measurements Deamed Highly Reliable But Not Guaranteed.

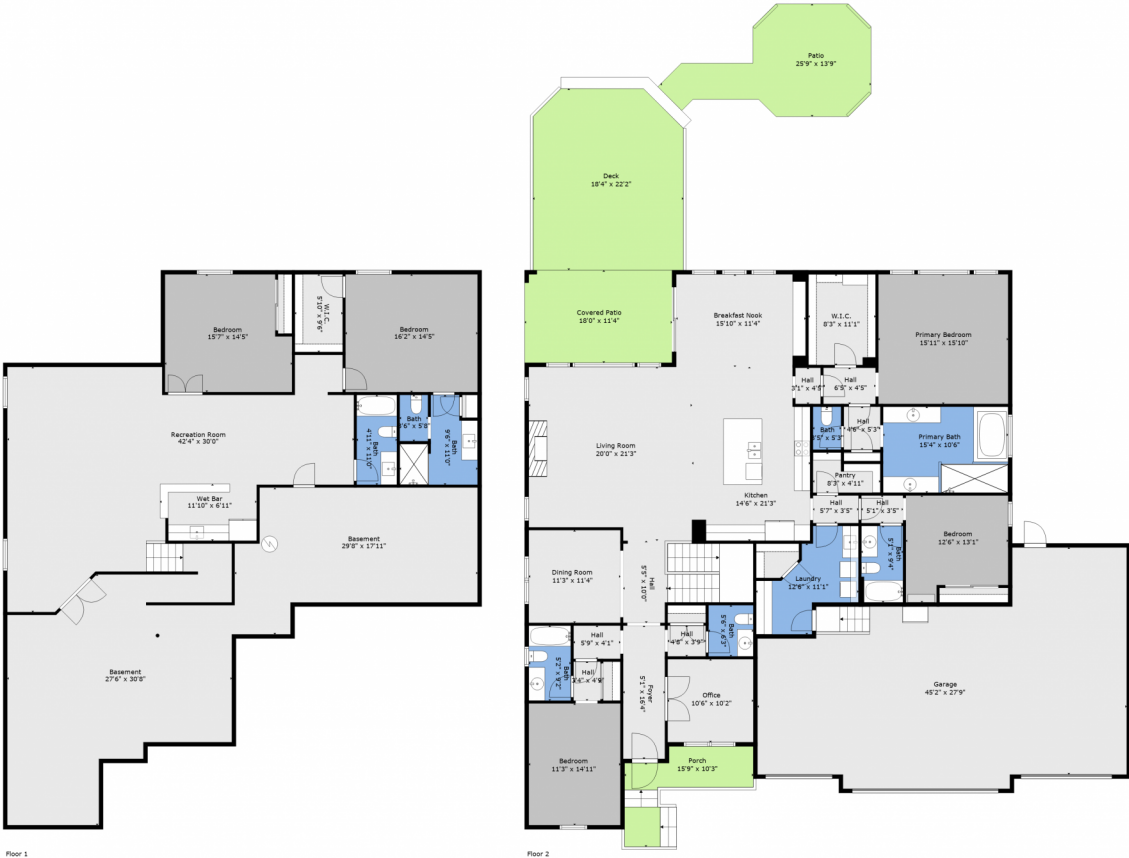


Disclaimer: Sizes and Dimensions are Approximate, Actual May Vary.

Shawn Bandel
720-318-7639
shawn@goodliferealestatellc.com



1013 Compass Drive, Erie, CO 80516 — All Levels



TOTAL: 4383 sq. ft
BELOW GROUND: 1611 sq. ft, FLOOR 2: 2772 sq. ft
EXCLUDED AREAS: BASEMENT: 1101 sq. ft, GARAGE: 1037 sq. ft, PORCH: 109 sq. ft,
DECK: 391 sq. ft, COVERED PATIO: 204 sq. ft, PATIO: 232 sq. ft,
WALLS: 301 sq. ft

Floor Plan Created By V1photos.com, Measurements Deamed Highly Reliable But Not Guaranteed.



Disclaimer: Sizes and Dimensions are Approximate, Actual May Vary.



Scan code
for more
property
details

