

Grand Home on Bingham Lake



Single Family



4676 SQFT



4 Beds



3/1 Baths



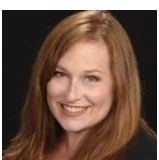
3 Car



0.62 Acre

PROPERTY DETAILS

Stunning mountain and lake views highlight this spacious home in the desirable Pinery area. Built in 1991, it features a traditional layout with a large kitchen, oversized dining room, and generous living spaces. Enjoy two patios, a private balcony in the primary suite, and ample windows showcasing views of Bingham Lake and Pikes Peak. A new roof and fresh exterior paint are already completed, allowing you to focus on personalizing the interior. The property boasts beautiful landscaping, perfect for outdoor relaxation and entertaining. With a full-price offer, a carpet allowance is included. Don't miss this opportunity for a well-built home with endless potential and an assumable VA loan!



Audrey Schoeppner
720-539-1220
aschoeppner@kw.com



Scan code
for more
property
details

