

9200 E Cherry Creek South Drive
Denver, CO 80231

COMMUNITY: Highline Club

MLS # 4573928

PRICE \$475,000



Townhouse



2441 SQFT



2 Beds



2/2 Baths



2 Car



0.05 Acre

PROPERTY DETAILS

Welcome to this updated 2-bedroom, 4-bath townhome in the Highline Club community, surrounded by greenery and near the Highline Canal Trail! The open floor plan features fresh paint and new flooring, with large windows for natural light. Enjoy the cozy fireplace, stylish kitchen with breakfast bar, and a patio with a fenced yard for outdoor relaxation. Each primary suite includes a walk-in shower and ample closet space, plus a main floor powder room for guests. The finished basement offers extra living space, ideal for a family room or office. With a 2-car garage and low-maintenance living, this home is perfect for outdoor enthusiasts, close to parks and amenities like a clubhouse, swimming pool, and sports courts. Don't miss this opportunity!

Trish Kelly

720-331-6377

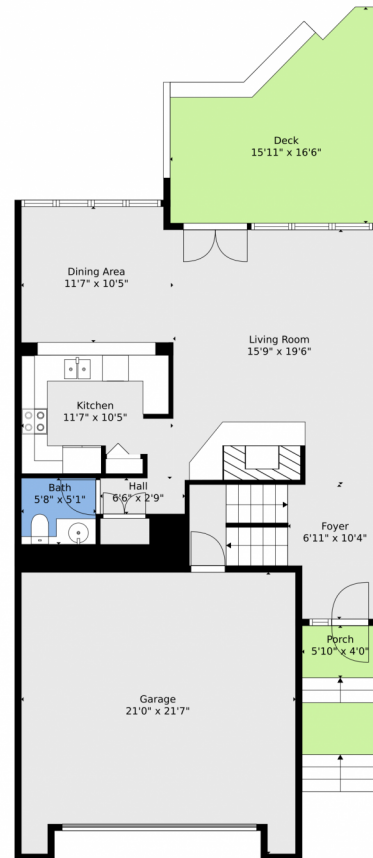
trish@trishkelly.com

<https://www.trishkelly.com>

Scan code
for more
property
details



9200 E Cherry Creek South Drive, Denver, CO 80231 — Main



TOTAL: 2290 sq. ft

BELOW GROUND: 635 sq. ft, FLOOR 2: 745 sq. ft, FLOOR 3: 438 sq. ft, FLOOR 4: 472 sq. ft
EXCLUDED AREAS: STORAGE: 23 sq. ft, UTILITY: 55 sq. ft, GARAGE: 414 sq. ft,
DECK: 210 sq. ft, PORCH: 74 sq. ft, BALCONY: 168 sq. ft,
OPEN TO BELOW: 18 sq. ft, WALLS: 209 sq. ft

Floor Plan Created By V1photos.com, Measurements Deamed Highly Reliable But Not Guaranteed.



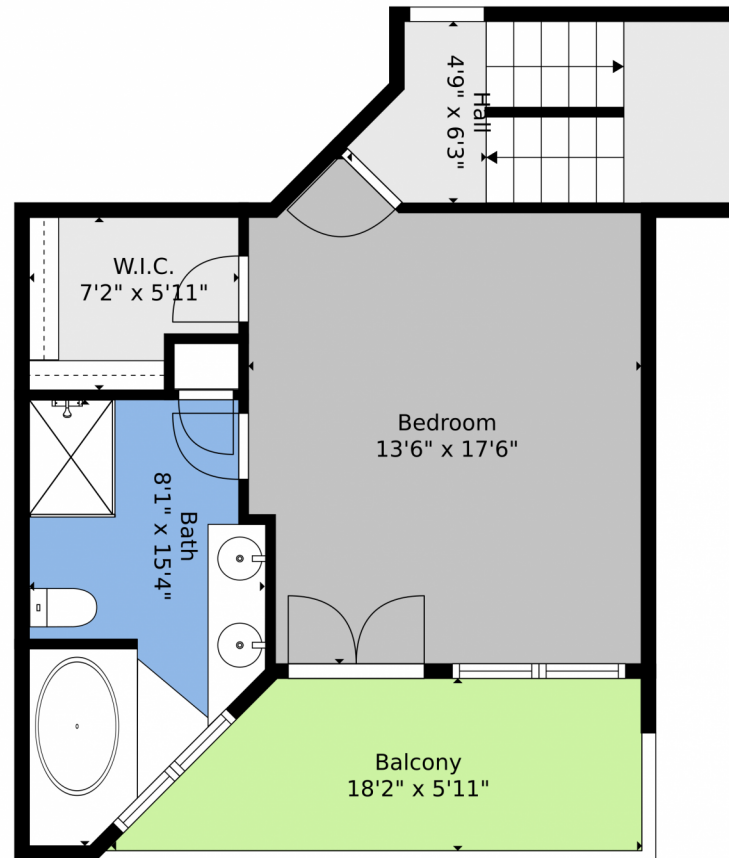
Disclaimer: Sizes and Dimensions are Approximate, Actual May Vary.

Trish Kelly
720-331-6377
trish@trishkelly.com
<https://www.trishkelly.com>

Scan code
for more
property
details



9200 E Cherry Creek South Drive, Denver, CO 80231 — 2nd Level



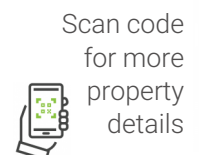
TOTAL: 2290 sq. ft
BELOW GROUND: 635 sq. ft, FLOOR 2: 745 sq. ft, FLOOR 3: 438 sq. ft, FLOOR 4: 472 sq. ft
EXCLUDED AREAS: STORAGE: 23 sq. ft, UTILITY: 55 sq. ft, GARAGE: 414 sq. ft,
DECK: 210 sq. ft, PORCH: 74 sq. ft, BALCONY: 168 sq. ft,
OPEN TO BELOW: 18 sq. ft, WALLS: 209 sq. ft

Floor Plan Created By V1photos.com, Measurements Deamed Highly Reliable But Not Guaranteed.



Disclaimer: Sizes and Dimensions are Approximate, Actual May Vary.

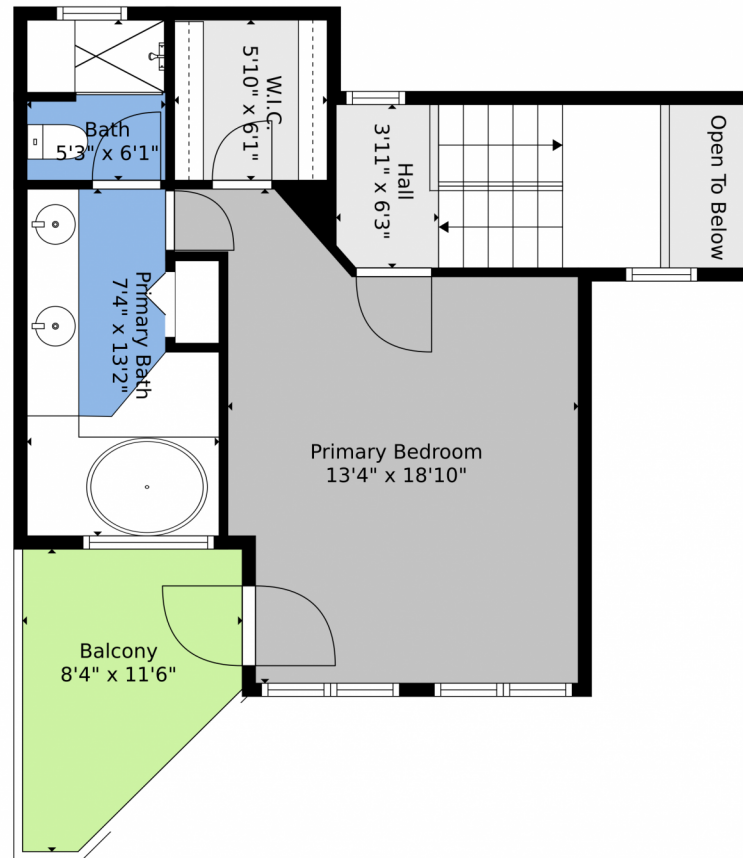
Trish Kelly
720-331-6377
trish@trishkelly.com
<https://www.trishkelly.com>



Scan code
for more
property
details



9200 E Cherry Creek South Drive, Denver, CO 80231 — 3rd Level



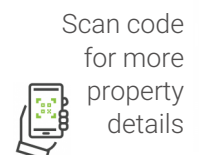
TOTAL: 2290 sq. ft
BELOW GROUND: 635 sq. ft, FLOOR 2: 745 sq. ft, FLOOR 3: 438 sq. ft, FLOOR 4: 472 sq. ft
EXCLUDED AREAS: STORAGE: 23 sq. ft, UTILITY: 55 sq. ft, GARAGE: 414 sq. ft,
DECK: 210 sq. ft, PORCH: 74 sq. ft, BALCONY: 168 sq. ft,
OPEN TO BELOW: 18 sq. ft, WALLS: 209 sq. ft

Floor Plan Created By V1photos.com, Measurements Deamed Highly Reliable But Not Guaranteed.

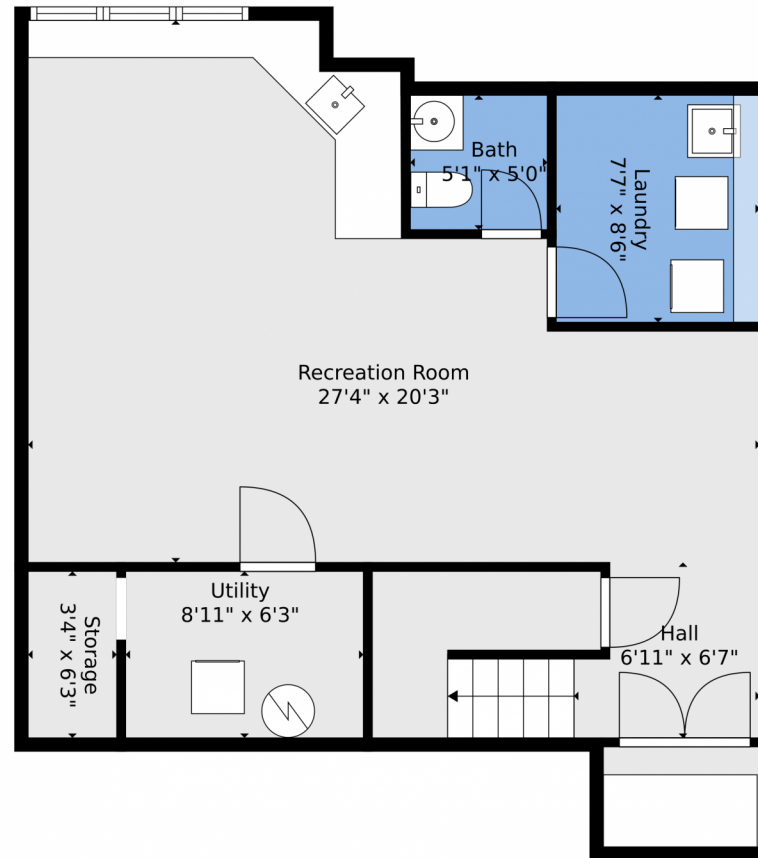


Disclaimer: Sizes and Dimensions are Approximate, Actual May Vary.

Trish Kelly
720-331-6377
trish@trishkelly.com
<https://www.trishkelly.com>



9200 E Cherry Creek South Drive, Denver, CO 80231 — Lower Level



TOTAL: 2290 sq. ft
BELOW GROUND: 635 sq. ft, FLOOR 2: 745 sq. ft, FLOOR 3: 438 sq. ft, FLOOR 4: 472 sq. ft
EXCLUDED AREAS: STORAGE: 23 sq. ft, UTILITY: 55 sq. ft, GARAGE: 414 sq. ft,
DECK: 210 sq. ft, PORCH: 74 sq. ft, BALCONY: 168 sq. ft,
OPEN TO BELOW: 18 sq. ft, WALLS: 209 sq. ft

Floor Plan Created By V1photos.com, Measurements Deamed Highly Reliable But Not Guaranteed.



Disclaimer: Sizes and Dimensions are Approximate, Actual May Vary.

9200 E Cherry Creek South Drive, Denver, CO 80231 — All Levels



TOTAL: 2290 sq. ft
 BELOW GROUND: 635 sq. ft, FLOOR 2: 745 sq. ft, FLOOR 3: 438 sq. ft, FLOOR 4: 472 sq. ft
 EXCLUDED AREAS: STORAGE: 23 sq. ft, UTILITY: 55 sq. ft, GARAGE: 414 sq. ft,
 DECK: 210 sq. ft, PORCH: 74 sq. ft, BALCONY: 168 sq. ft,
 OPEN TO BELOW: 18 sq. ft, WALLS: 209 sq. ft

Floor Plan Created By V1photos.com, Measurements Deamed Highly Reliable But Not Guaranteed.



Disclaimer: Sizes and Dimensions are Approximate, Actual May Vary.

Trish Kelly
 720-331-6377
 trish@trishkelly.com
<https://www.trishkelly.com>

