




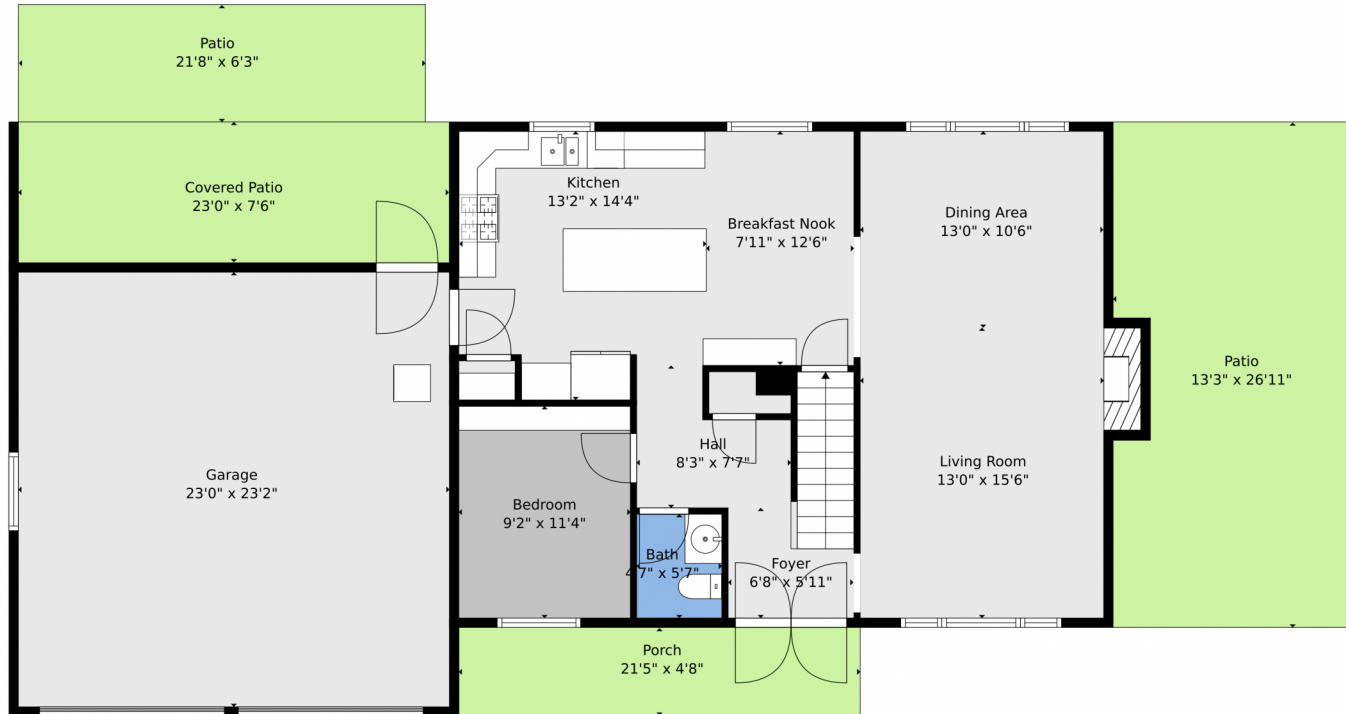
 Single Family    2619 SQFT    4 Beds    3 Baths    2 Car    1 Acre



**Brianna Griffin**  
720-272-9710  
brianna@wealthbyre.com  
<https://www.WealthbyRE.com>





**TOTAL: 2549 sq. ft**  
BELOW GROUND: 760 sq. ft, FLOOR 2: 896 sq. ft, FLOOR 3: 893 sq. ft  
EXCLUDED AREAS: STORAGE: 101 sq. ft, UTILITY: 32 sq. ft, GARAGE: 533 sq. ft,  
PORCH: 101 sq. ft, COVERED PATIO: 173 sq. ft, PATIO: 480 sq. ft,  
FIREPLACE: 13 sq. ft, WALLS: 223 sq. ft

Floor Plan Created By V1photos.com, Measurements Deamed Highly Reliable But Not Guaranteed.



Disclaimer: Sizes and Dimensions are Approximate, Actual May Vary.



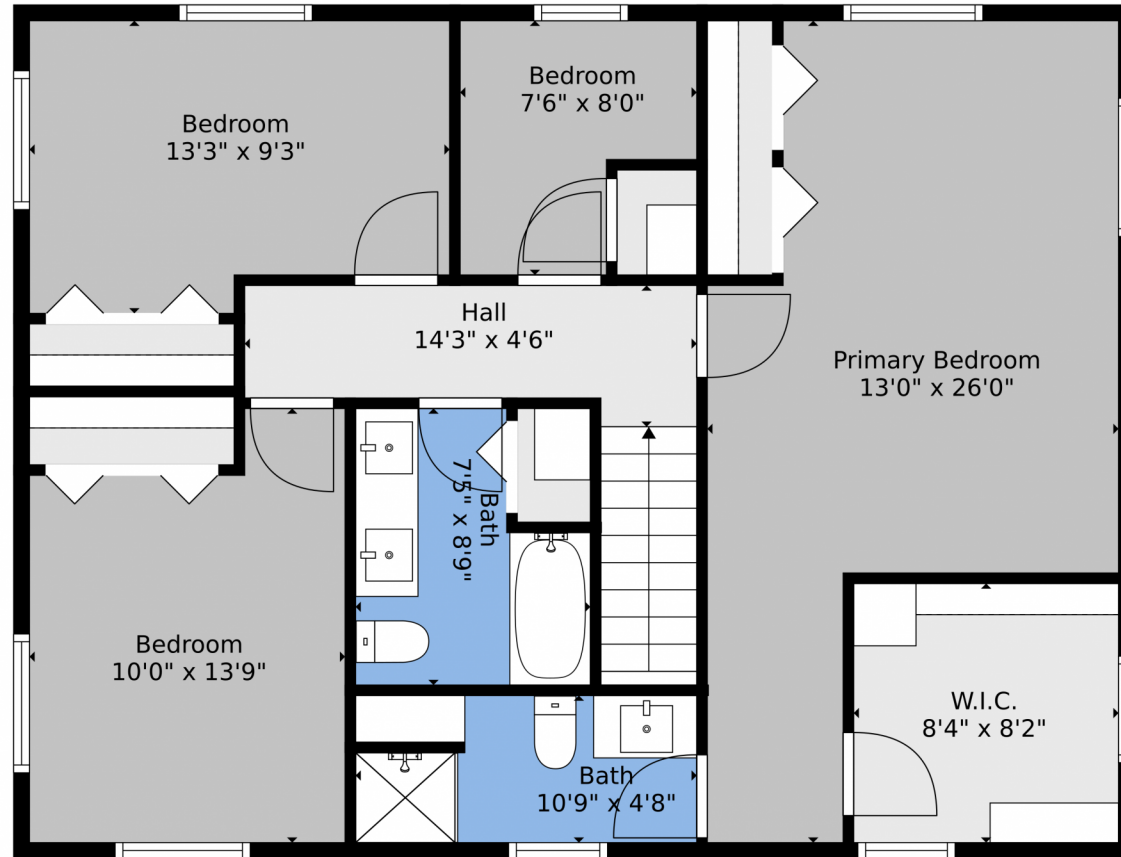
**Brianna Griffin**  
720-272-9710  
brianna@wealthbyre.com  
<https://www.WealthbyRE.com>



Scan code  
for more  
property  
details



5390 Nile Street, Golden, CO 80403 – 2nd Level



**TOTAL: 2549 sq. ft**  
BELOW GROUND: 760 sq. ft, FLOOR 2: 896 sq. ft, FLOOR 3: 893 sq. ft  
EXCLUDED AREAS: STORAGE: 101 sq. ft, UTILITY: 32 sq. ft, GARAGE: 533 sq. ft,  
PORCH: 101 sq. ft, COVERED PATIO: 173 sq. ft, PATIO: 480 sq. ft,  
FIREPLACE: 13 sq. ft, WALLS: 223 sq. ft

Floor Plan Created By V1photos.com, Measurements Deamed Highly Reliable But Not Guaranteed.



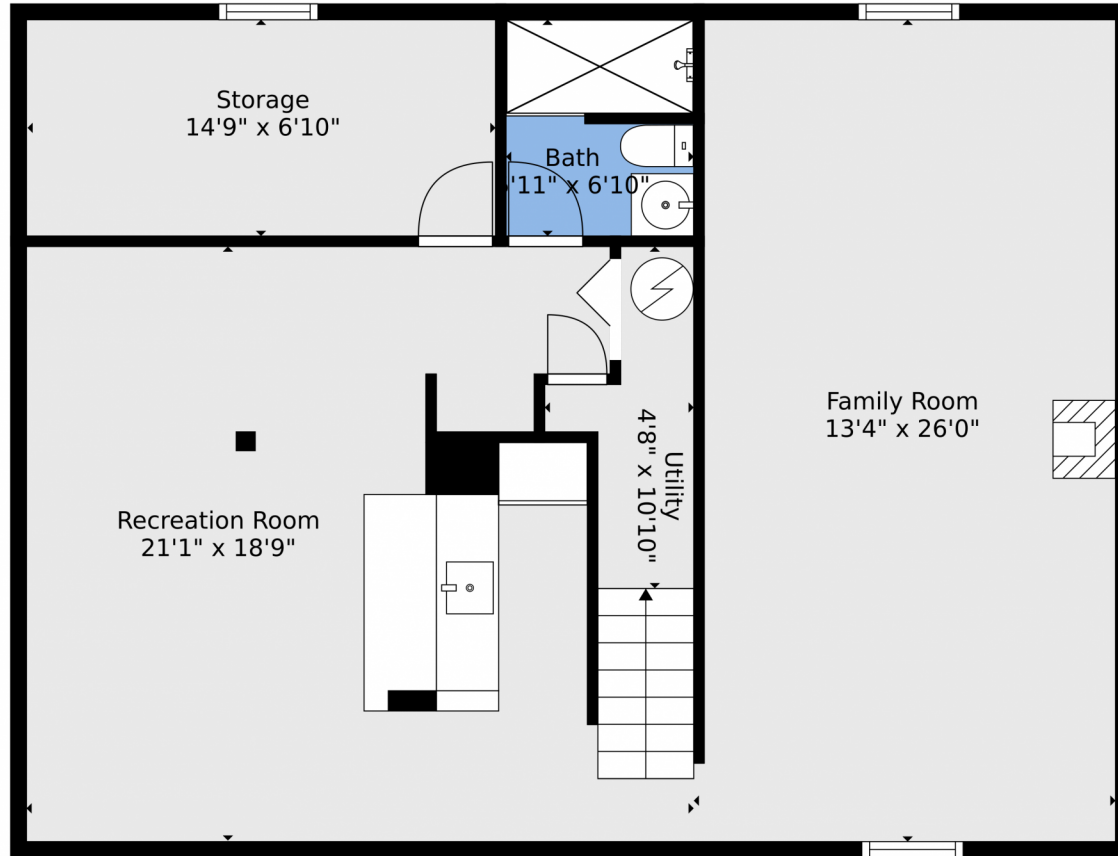
Disclaimer: Sizes and Dimensions are Approximate, Actual May Vary.



**Brianna Griffin**  
720-272-9710  
brianna@wealthbyre.com  
<https://www.WealthbyRE.com>



5390 Nile Street, Golden, CO 80403 – Basement



**TOTAL: 2549 sq. ft**  
BELOW GROUND: 760 sq. ft, FLOOR 2: 896 sq. ft, FLOOR 3: 893 sq. ft  
EXCLUDED AREAS: STORAGE: 101 sq. ft, UTILITY: 32 sq. ft, GARAGE: 533 sq. ft,  
PORCH: 101 sq. ft, COVERED PATIO: 173 sq. ft, PATIO: 480 sq. ft,  
FIREPLACE: 13 sq. ft, WALLS: 223 sq. ft

Floor Plan Created By V1photos.com, Measurements Deamed Highly Reliable But Not Guaranteed.

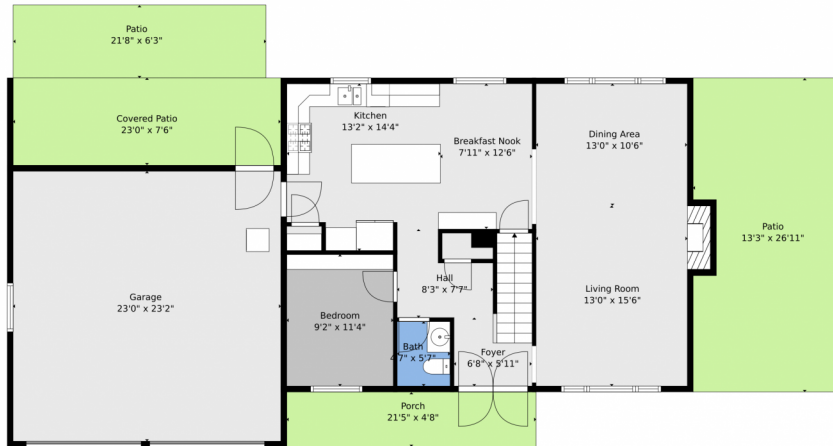
Disclaimer: Sizes and Dimensions are Approximate, Actual May Vary.



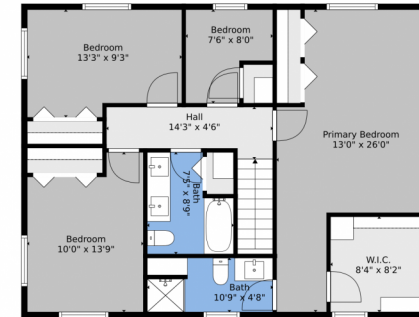
**Brianna Griffin**  
720-272-9710  
brianna@wealthbyre.com  
<https://www.WealthbyRE.com>



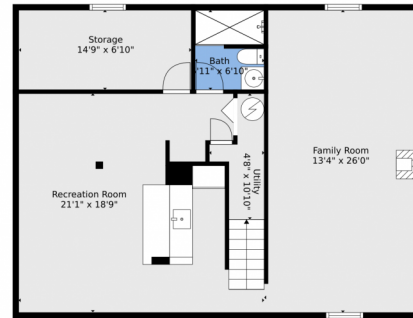
# 5390 Nile Street, Golden, CO 80403 – All Levels



Floor 2



Floor 3



Floor 1

**TOTAL: 2549 sq. ft**  
BELOW GROUND: 760 sq. ft, FLOOR 2: 896 sq. ft, FLOOR 3: 893 sq. ft  
EXCLUDED AREAS: STORAGE: 101 sq. ft, UTILITY: 32 sq. ft, GARAGE: 533 sq. ft,  
PORCH: 101 sq. ft, COVERED PATIO: 173 sq. ft, PATIO: 480 sq. ft,  
FIREPLACE: 13 sq. ft, WALLS: 223 sq. ft

Floor Plan Created By V1photos.com, Measurements Deamed Highly Reliable But Not Guaranteed.



Disclaimer: Sizes and Dimensions are Approximate, Actual May Vary.



**Brianna Griffin**  
720-272-9710  
brianna@wealthbyre.com  
<https://www.WealthbyRE.com>



Scan code  
for more  
property  
details

