



16540 Mesquite Road
Peyton, CO 80831
COMMUNITY: Reata



Single Family



5287 SQFT



7 Beds



4/1 Baths



3 Car



5 Acre



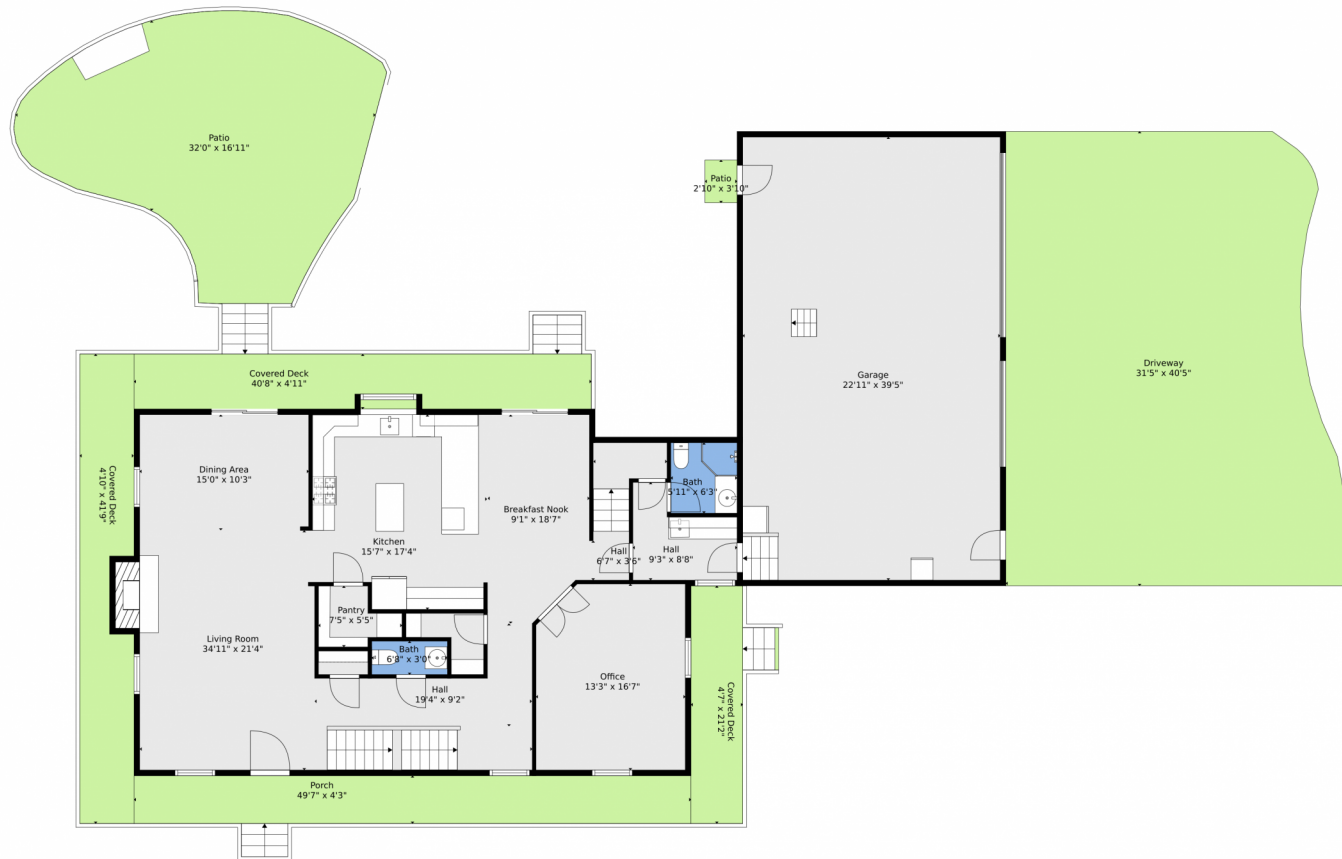
Vonnetta Johnson
719-661-3747
vonniejohnson@comcast.net



Scan code
for more
property
details



16540 Mesquite Road, Peyton, CO 80831 — Main



TOTAL: 4965 sq. ft
BELOW GROUND: 1348 sq. ft, FLOOR 2: 1567 sq. ft, FLOOR 3: 2050 sq. ft
EXCLUDED AREAS: UTILITY: 83 sq. ft, GARAGE: 903 sq. ft, DRIVEWAY: 1131 sq. ft,
PATIO: 578 sq. ft, COVERED DECK: 520 sq. ft, PORCH: 223 sq. ft,
BAY WINDOW: 8 sq. ft, FIREPLACE: 30 sq. ft, WALLS: 370 sq. ft

Floor Plan Created By V1photos.com, Measurements Deamed Highly Reliable But Not Guaranteed.



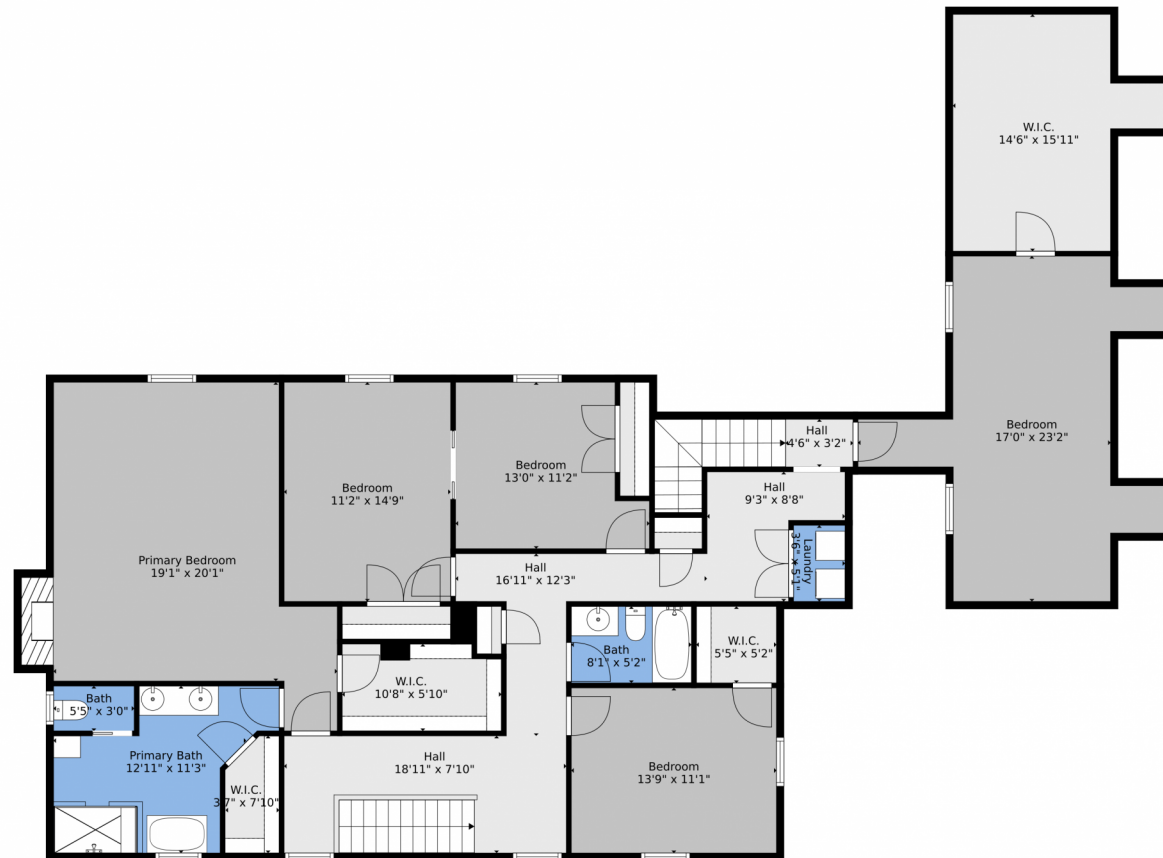
Disclaimer: Sizes and Dimensions are Approximate, Actual May Vary.



Vonnetta Johnson
719-661-3747
vonniejohnson@comcast.net



16540 Mesquite Road, Peyton, CO 80831 — 2nd Level



TOTAL: 4965 sq. ft
BELOW GROUND: 1348 sq. ft, FLOOR 2: 1567 sq. ft, FLOOR 3: 2050 sq. ft
EXCLUDED AREAS: UTILITY: 83 sq. ft, GARAGE: 903 sq. ft, DRIVEWAY: 1131 sq. ft,
PATIO: 578 sq. ft, COVERED DECK: 520 sq. ft, PORCH: 223 sq. ft,
BAY WINDOW: 8 sq. ft, FIREPLACE: 30 sq. ft, WALLS: 370 sq. ft

Floor Plan Created By V1photos.com, Measurements Deamed Highly Reliable But Not Guaranteed.



Disclaimer: Sizes and Dimensions are Approximate, Actual May Vary.



Vonnetta Johnson
719-661-3747
vonniejohnson@comcast.net



16540 Mesquite Road, Peyton, CO 80831 — Basement



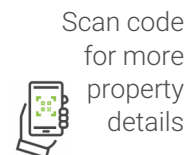
TOTAL: 4965 sq. ft
BELOW GROUND: 1348 sq. ft, FLOOR 2: 1567 sq. ft, FLOOR 3: 2050 sq. ft
EXCLUDED AREAS: UTILITY: 83 sq. ft, GARAGE: 903 sq. ft, DRIVEWAY: 1131 sq. ft,
PATIO: 578 sq. ft, COVERED DECK: 520 sq. ft, PORCH: 223 sq. ft,
BAY WINDOW: 8 sq. ft, FIREPLACE: 30 sq. ft, WALLS: 370 sq. ft
Floor Plan Created By V1photos.com, Measurements Deamed Highly Reliable But Not Guaranteed.



Disclaimer: Sizes and Dimensions are Approximate, Actual May Vary.



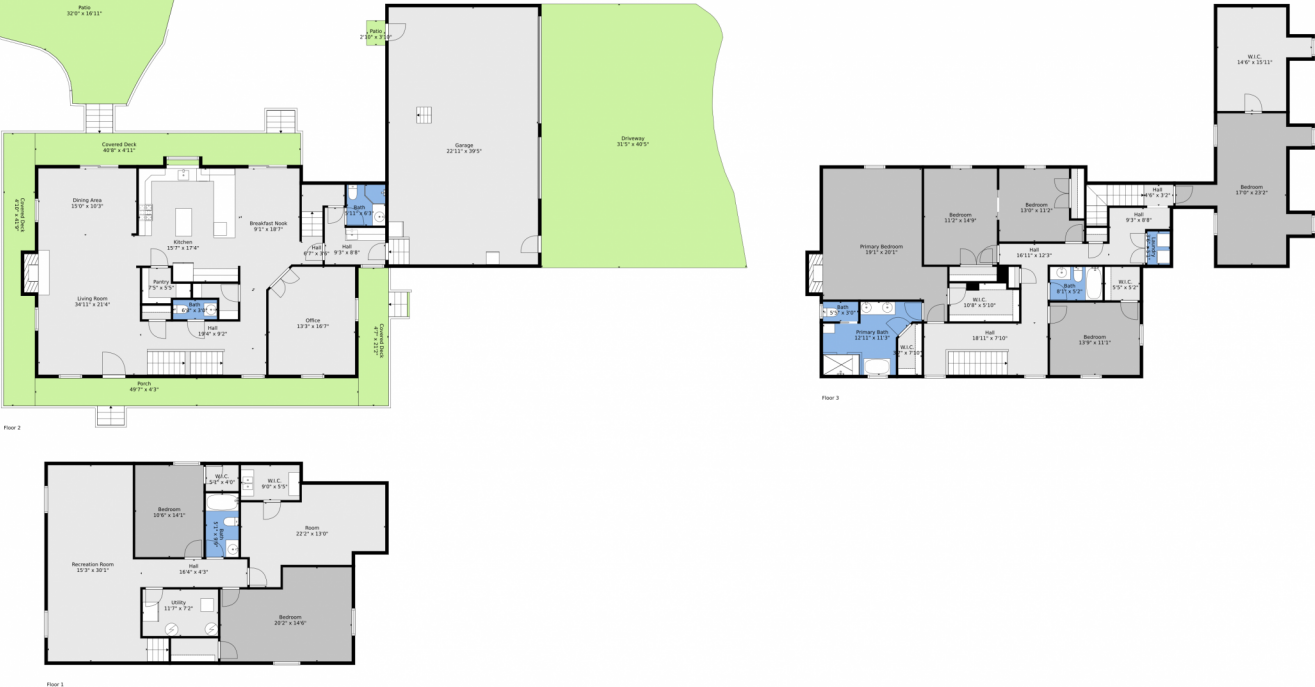
Vonnetta Johnson
719-661-3747
vonniejohnson@comcast.net



Scan code
for more
property
details



16540 Mesquite Road, Peyton, CO 80831 — All Levels



TOTAL: 4965 sq. ft
BELOW GROUND: 1348 sq. ft, FLOOR 2: 1567 sq. ft, FLOOR 3: 2050 sq. ft
EXCLUDED AREAS: UTILITY: 83 sq. ft, GARAGE: 903 sq. ft, DRIVEWAY: 1131 sq. ft,
PATIO: 578 sq. ft, COVERED DECK: 520 sq. ft, PORCH: 223 sq. ft,
BAY WINDOW: 8 sq. ft, FIREPLACE: 30 sq. ft, WALLS: 370 sq. ft

Floor Plan Created By V1photos.com, Measurements Deamed Highly Reliable But Not Guaranteed.



Disclaimer: Sizes and Dimensions are Approximate, Actual May Vary.



Vonnetta Johnson
719-661-3747
vonniejohnson@comcast.net



Scan code
for more
property
details

