



22990 County Road 30
 Hudson, CO 80642
 COMMUNITY: Re#1213-26-4 Re-3453

MLS
 # IR1044751
 PRICE \$899,000



Single Family 2168 SQFT 3 Beds 2 Baths 10+ Car 21.45 Acre

PROPERTY DETAILS

Escape the city's hustle and bustle to this serene ranch-style home on 21+ acres with stunning mountain views. Ideal for hobbyists, it features a 60x40 shop with utilities and large access doors. Inside, enjoy 3 spacious bedrooms plus a versatile 4th room, an open layout with vaulted ceilings, and a cozy gas fireplace. The main-floor primary suite includes a luxurious bath and patio access. Additional amenities include a laundry room, mudroom, and attached two-car garage. Outdoors, you'll find an irrigated lawn, fenced backyard, and room for livestock with no HOA restrictions. Conveniently located near Platteville and major roads, this property combines country living with modern comfort. A home warranty is included.



Jennifer Hart
 720-935-1137
 hartrealty1@gmail.com



22990 County Road 30, Hudson, CO 80642 – Main



TOTAL: 2097 sq. ft
FLOOR 1: 0 sq. ft, FLOOR 2: 2097 sq. ft
EXCLUDED AREAS: GARAGE: 2796 sq. ft, PORCH: 207 sq. ft, COVERED PATIO: 78 sq. ft,
BAY WINDOW: 9 sq. ft, WALLS: 249 sq. ft

Floor Plan Created By V1photos.com. Measurements Deamed Highly Reliable But Not Guaranteed.



Disclaimer: Sizes and Dimensions are Approximate, Actual May Vary.



Jennifer Hart
720-935-1137
hartrealty1@gmail.com



Scan code
for more
property
details



22990 County Road 30, Hudson, CO 80642 – Detached Garage



TOTAL: 2097 sq. ft
FLOOR 1: 0 sq. ft, FLOOR 2: 2097 sq. ft
EXCLUDED AREAS: GARAGE: 2796 sq. ft, PORCH: 207 sq. ft, COVERED PATIO: 78 sq. ft,
BAY WINDOW: 9 sq. ft, WALLS: 249 sq. ft

Floor Plan Created By V1photos.com. Measurements Deamed Highly Reliable But Not Guaranteed.



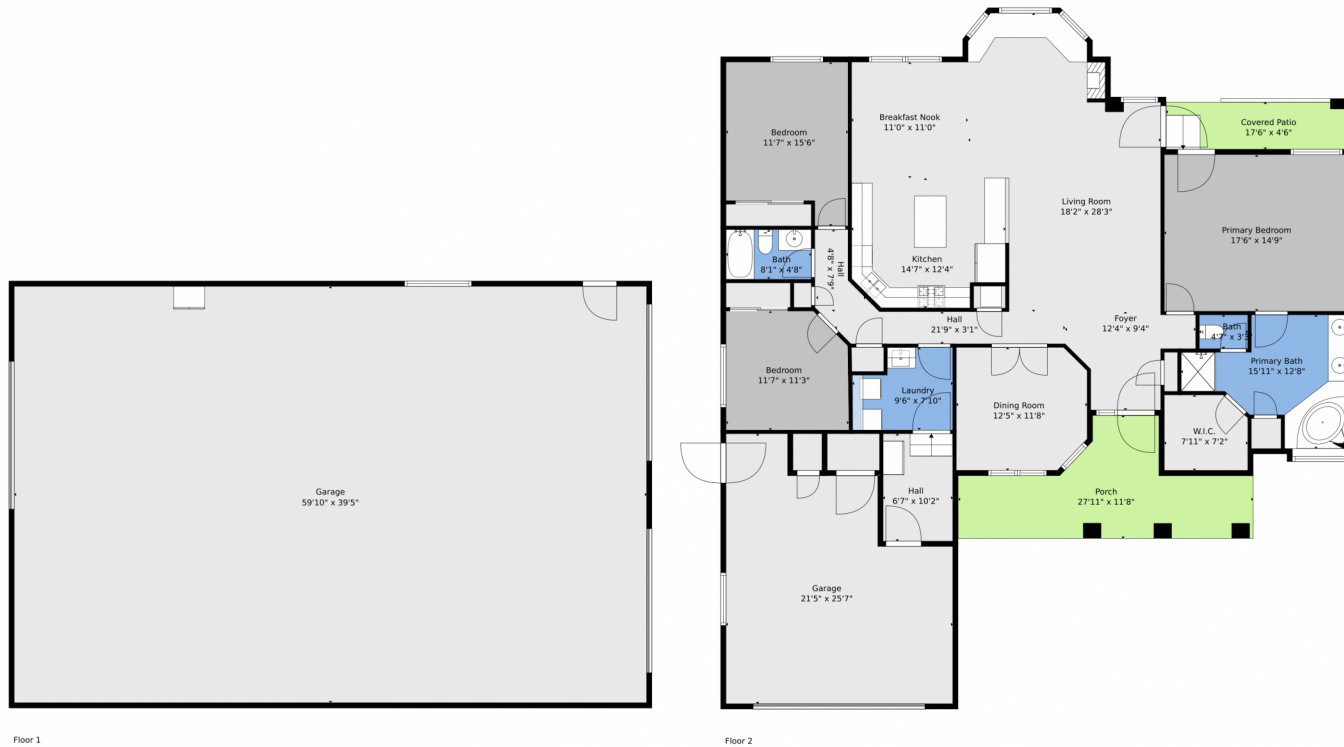
Disclaimer: Sizes and Dimensions are Approximate, Actual May Vary.



Jennifer Hart
720-935-1137
hartrealty1@gmail.com



22990 County Road 30, Hudson, CO 80642 – All Levels



TOTAL: 2097 sq. ft
FLOOR 1: 0 sq. ft, FLOOR 2: 2097 sq. ft
EXCLUDED AREAS: GARAGE: 2796 sq. ft, PORCH: 207 sq. ft, COVERED PATIO: 78 sq. ft,
BAY WINDOW: 9 sq. ft, WALLS: 249 sq. ft

Floor Plan Created By V1photos.com. Measurements Deamed Highly Reliable But Not Guaranteed.



Disclaimer: Sizes and Dimensions are Approximate, Actual May Vary.



Jennifer Hart
720-935-1137
hartrealty1@gmail.com



Scan code
for more
property
details

