

170 South Holly Street  
Denver, CO 80246



Single Family



2100 SQFT

Trish Kelly  
720-331-6377  
trish@trishkelly.com



Scan code  
for more  
property  
details



# 170 South Holly Street, Denver, CO 80246 — Main



**TOTAL: 1851 sq. ft**  
BELOW GROUND: 333 sq. ft, FLOOR 2: 1518 sq. ft  
EXCLUDED AREAS: UTILITY: 37 sq. ft, GARAGE: 369 sq. ft, PORCH: 80 sq. ft,  
PATIO: 522 sq. ft, WALLS: 169 sq. ft

Floor Plan Created By V1photos.com, Measurements Deamed Highly Reliable But Not Guaranteed.

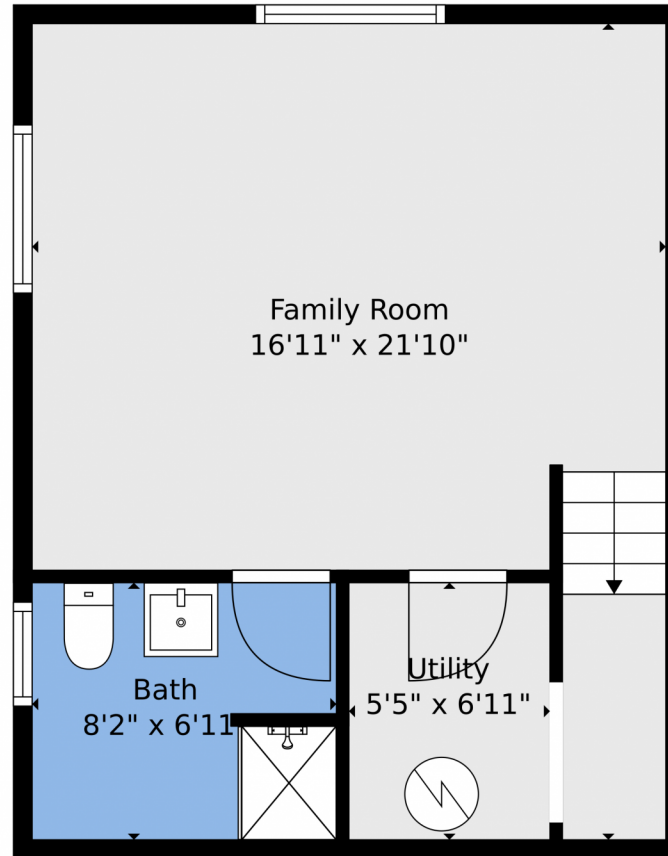


Disclaimer: Sizes and Dimensions are Approximate, Actual May Vary.

Trish Kelly  
720-331-6377  
trish@trishkelly.com



## 170 South Holly Street, Denver, CO 80246 — Lower Level



**TOTAL: 1851 sq. ft**  
BELOW GROUND: 333 sq. ft, FLOOR 2: 1518 sq. ft  
EXCLUDED AREAS: UTILITY: 37 sq. ft, GARAGE: 369 sq. ft, PORCH: 80 sq. ft,  
PATIO: 522 sq. ft, WALLS: 169 sq. ft

Floor Plan Created By V1photos.com, Measurements Deamed Highly Reliable But Not Guaranteed.



Disclaimer: Sizes and Dimensions are Approximate, Actual May Vary.

Trish Kelly  
720-331-6377  
trish@trishkelly.com



# 170 South Holly Street, Denver, CO 80246 — All Levels



**TOTAL: 1851 sq. ft**  
BELOW GROUND: 333 sq. ft, FLOOR 2: 1518 sq. ft  
EXCLUDED AREAS: UTILITY: 37 sq. ft, GARAGE: 369 sq. ft, PORCH: 80 sq. ft,  
PATIO: 522 sq. ft, WALLS: 169 sq. ft

Floor Plan Created By V1photos.com, Measurements Deamed Highly Reliable But Not Guaranteed.



Disclaimer: Sizes and Dimensions are Approximate, Actual May Vary.

Trish Kelly  
720-331-6377  
trish@trishkelly.com

