

Charming ranch near Anschutz Medical Campus!



Single Family



1687 SQFT



4 Beds



2 Baths



1 Car



0.18 Acre

PROPERTY DETAILS

Discover this charming 1964 ranch home in the sought-after Morris Heights neighborhood, owned by the same family for decades. The main floor features a spacious living room, dining area, kitchen, three bedrooms, and a full bath. The finished basement adds a large rec room, an additional bedroom, a bonus room, and a bathroom, along with a utility/storage area. Outside, enjoy Colorado evenings on the covered patio overlooking a generous backyard with mature landscaping, a brick fence, and a storage shed. A one-car attached garage offers convenience. While retaining vintage charm, the home is well-maintained, ready for personal updates. Ideally located near Anschutz Medical Campus, Denver International Airport, shopping, dining, and major highways.



Beth Gibson
720-849-3577
bethgibson@kw.com
<https://bethgibson.kw.com/>



Phil Gibson
303-325-6020
philgibson@kw.com
<https://unitygroup.kw.com/>



Scan code
for more
property
details



3098 Zion Street, Aurora, CO 80011 — Main



TOTAL: 1821 sq. ft
BELOW GROUND: 722 sq. ft, FLOOR 2: 1099 sq. ft
EXCLUDED AREAS: UNDEFINED: 26 sq. ft, UTILITY: 334 sq. ft, GARAGE: 256 sq. ft,
PORCH: 78 sq. ft, PATIO: 1011 sq. ft, WALLS: 184 sq. ft

Floor Plan Created By V1photos.com, Measurements Deamed Highly Reliable But Not Guaranteed.



Disclaimer: Sizes and Dimensions are Approximate, Actual May Vary.



Beth Gibson
720-849-3577
bethgibson@kw.com
<https://bethgibson.kw.com/>



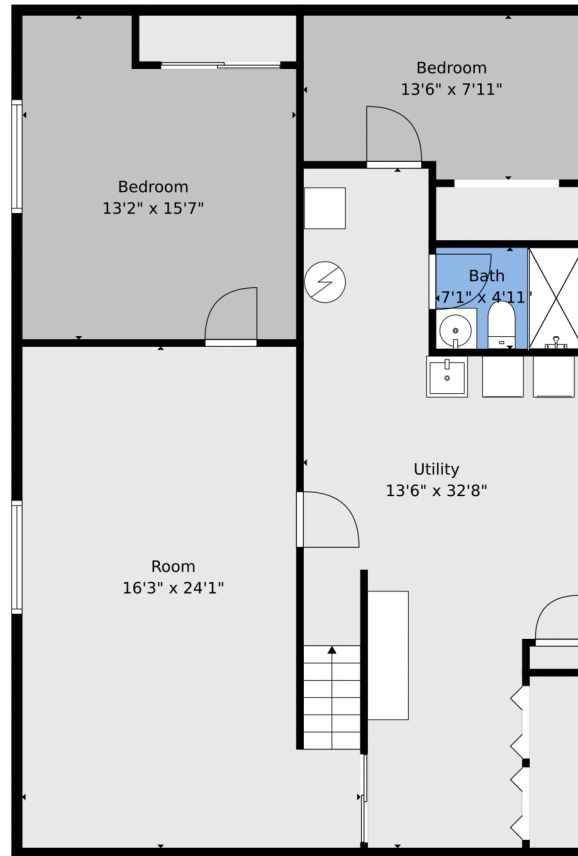
Phil Gibson
303-325-6020
philgibson@kw.com
<https://unitygroup.kw.com/>



Scan code
for more
property
details



3098 Zion Street, Aurora, CO 80011 — Basement



TOTAL: 1821 sq. ft
BELOW GROUND: 722 sq. ft, FLOOR 2: 1099 sq. ft
EXCLUDED AREAS: UNDEFINED: 26 sq. ft, UTILITY: 334 sq. ft, GARAGE: 256 sq. ft,
PORCH: 78 sq. ft, PATIO: 1011 sq. ft, WALLS: 184 sq. ft

Floor Plan Created By V1photos.com. Measurements Deamed Highly Reliable But Not Guaranteed.

Disclaimer: Sizes and Dimensions are Approximate, Actual May Vary.



Beth Gibson
720-849-3577
bethgibson@kw.com
<https://bethgibson.kw.com/>



Phil Gibson
303-325-6020
philgibson@kw.com
<https://unitygroup.kw.com/>



Scan code
for more
property
details

