

Vintage Cabin with Modern Amenities



Single Family



1304 SQFT



3 Beds



2/1 Baths



0.5 Acre

PROPERTY DETAILS

Welcome to this darling cottage, tucked away at the end of a quiet street on a rare, private ½-acre double lot with scenic views. This property blends vintage charm with extensive modern improvements for peace of mind, including a new electric panel, new roof, new sewer line, new interior & exterior paint, new deck, new bathroom & much more. Step inside & you will find warm character & ample space, starting with a cozy living room with hardwood floors & stone fireplace, and additional large sunlit family room. The updated kitchen is a gathering place, complete with all-new butcher block countertops & farm sink. Bar seating makes the kitchen a great place to hang, especially next to the cozy wood burning stove. The bedroom offers flexibility—perfect as a primary for main level living, or an office. Many rooms feature knotty pine, which can be left as-is or painted for a modern farmhouse look. Head downstairs to find a brand new kitchenette, 2 bedrooms with ample closets (one a walk-in), flex space for workout or crafting, laundry room & a lovely new bathroom with a luxury shower. This is an ideal primary bedroom area, with access to the yard. The newly built south-facing deck offers great outdoor living, as does much of the lot with plenty of flat area, fenced garden, privacy & views! The large attached workshop/storage has plentiful cabinetry & workbench. Lots of parking too. This is a peaceful, private setting where one can hear the rippling waters of Bear Creek below. The darling hamlet of Kittredge offers so much - walk to the coffee shop, stroll to the park for a stream side picnic, experience fishing & miles of trails just 5 min away. And, it's only 2 miles to downtown Evergreen with restaurants, shops, amenities & the



Pandora & John Erlandson

303-888-6298

pandora@pandorajohnproperties.com

<https://www.pandorajohnproperties.com>

Scan code
for more
property
details



lake. Or head to Red Rocks Amphitheater & all that Denver offers – just 12 min away! Public road and utilities, not to mention the plethora of upgrades, make this vintage charmer a modern delight!



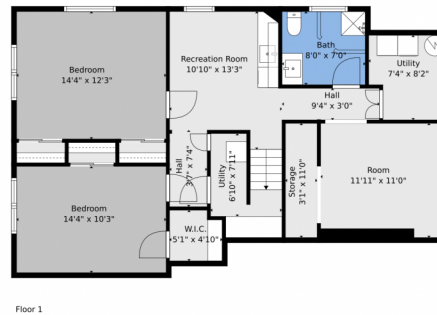
Pandora & John Erlandson
303-888-6298
pandora@pandorajohnproperties.com
<https://www.pandorajohnproperties.com>



Scan code
for more
property
details



3425 Burnham Drive, Kittredge, CO 80457 — All Levels



TOTAL: 1997 sq. ft
BELOW GRADE: 800 sq. ft, FLOOR 2: 1197 sq. ft
EXCLUDED AREAS: STORAGE: 35 sq. ft, UTILITY: 102 sq. ft, PORCH: 177 sq. ft,
FIREPLACE: 14 sq. ft, WALLS: 145 sq. ft

Floor Plan Created By V1photos.com, Measurements Deamed Highly Reliable But Not Guaranteed.



Disclaimer: Sizes and Dimensions are Approximate, Actual May Vary.



Pandora & John Erlandson
303-888-6298
pandora@pandorajohnproperties.com
<https://www.pandorajohnproperties.com>

