



3944 Douglas Mountain Drive
 Golden, CO 80403
COMMUNITY: Douglas Mountain Ranch

PRICE \$795,000



-  Single Family
-  2500 SQFT
-  3 Beds
-  1/2 Baths
-  3 Car
-  14 Acre

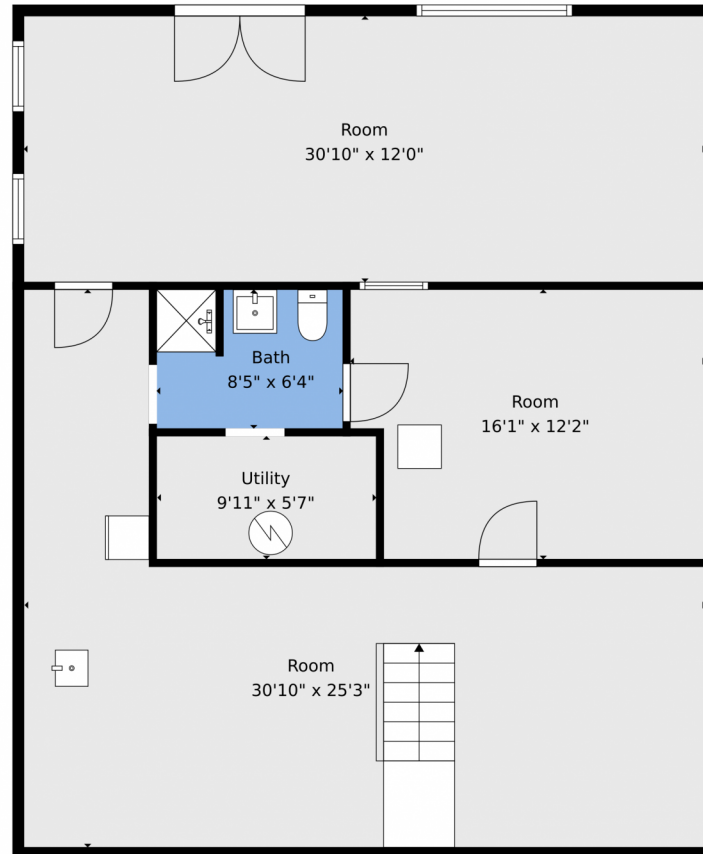
PROPERTY DETAILS

Tucked away in a quiet valley near Centennial Cone Park, this 14-acre retreat blends modern updates with wide-open versatility. The beautifully updated home features a maintenance-free exterior, updated main floor living and an unfinished basement—ready for your personal touch or expansion. Outside, an oversized 2-bay garage/workshop awaits your next project, while a greenhouse, paddock, loafing shed, and two additional sheds offer endless potential for livestock, hobbies, or homesteading. An oversized metal carport adds practical space for vehicles or equipment. Elk sightings are common here, making this the perfect blend of nature, function, and freedom—just minutes from trails, yet a world away from the noise. Domestic Well - 6 Person/3 Bedroom Septic System



Jodi Dolph
 303-902-9968
 jodi.dolph@kw.com
<https://www.TheDolphTeam.com>





TOTAL: 1539 sq. ft
BELOW GRADE: 0 sq. ft, FLOOR 2: 1160 sq. ft, FLOOR 3: 379 sq. ft
EXCLUDED AREAS: ROOM: 1048 sq. ft, UTILITY: 58 sq. ft, FULL BATH: 53 sq. ft,
SHED: 84 sq. ft, DECK: 229 sq. ft, PATIO: 118 sq. ft,
LOW CEILING: 566 sq. ft, WALLS: 223 sq. ft

Floor Plan Created By V1photos.com. Measurements Deamed Highly Reliable But Not Guaranteed.



Disclaimer: Sizes and Dimensions are Approximate, Actual May Vary.



Jodi Dolph
303-902-9968
jodi.dolph@kw.com
<https://www.TheDolphTeam.com>



3944 Douglas Mountain Drive, Golden, CO 80403 – floorplan_single_1



TOTAL: 1539 sq. ft
BELOW GRADE: 0 sq. ft, FLOOR 2: 1160 sq. ft, FLOOR 3: 379 sq. ft
EXCLUDED AREAS: ROOM: 1048 sq. ft, UTILITY: 58 sq. ft, FULL BATH: 53 sq. ft,
SHED: 84 sq. ft, DECK: 229 sq. ft, PATIO: 118 sq. ft,
LOW CEILING: 566 sq. ft, WALLS: 223 sq. ft

Floor Plan Created By V1photos.com. Measurements Deamed Highly Reliable But Not Guaranteed.



Disclaimer: Sizes and Dimensions are Approximate, Actual May Vary.

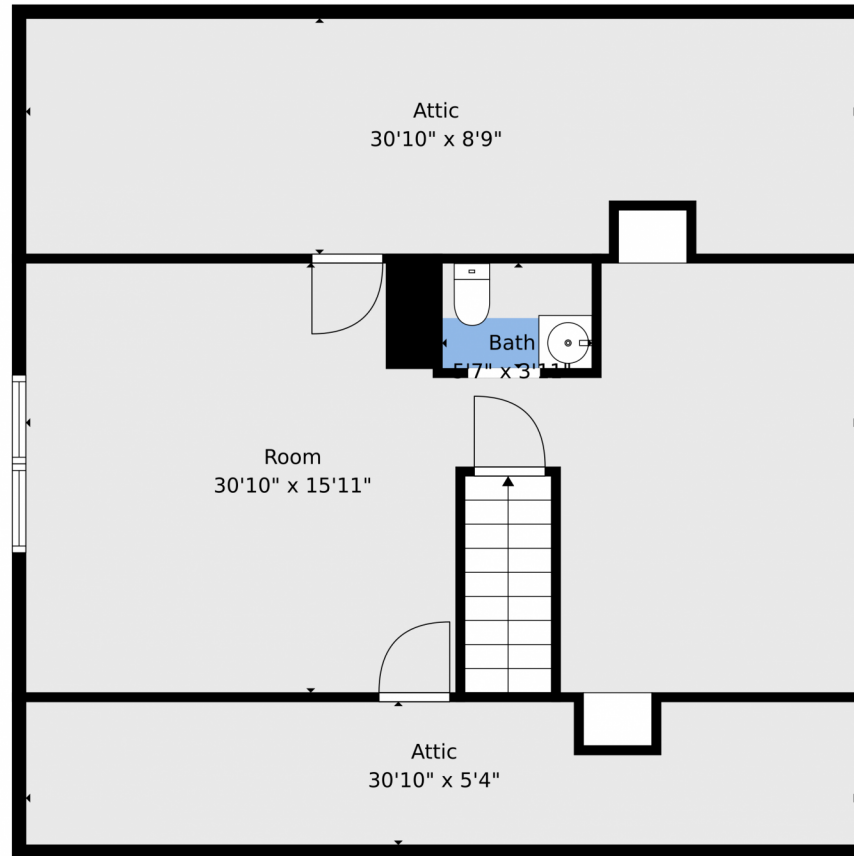


Jodi Dolph
303-902-9968
jodi.dolph@kw.com
<https://www.TheDolphTeam.com>



Scan code
for more
property
details





TOTAL: 1539 sq. ft
BELOW GRADE: 0 sq. ft, FLOOR 2: 1160 sq. ft, FLOOR 3: 379 sq. ft
EXCLUDED AREAS: ROOM: 1048 sq. ft, UTILITY: 58 sq. ft, FULL BATH: 53 sq. ft,
SHED: 84 sq. ft, DECK: 229 sq. ft, PATIO: 118 sq. ft,
LOW CEILING: 566 sq. ft, WALLS: 223 sq. ft

Floor Plan Created By V1photos.com. Measurements Deamed Highly Reliable But Not Guaranteed.



Disclaimer: Sizes and Dimensions are Approximate, Actual May Vary.



Jodi Dolph
303-902-9968
jodi.dolph@kw.com
<https://www.TheDolphTeam.com>





TOTAL: 1539 sq. ft
BELOW GRADE: 0 sq. ft, FLOOR 2: 1160 sq. ft, FLOOR 3: 379 sq. ft
EXCLUDED AREAS: ROOM: 1048 sq. ft, UTILITY: 58 sq. ft, FULL BATH: 53 sq. ft,
SHED: 84 sq. ft, DECK: 229 sq. ft, PATIO: 118 sq. ft,
LOW CEILING: 566 sq. ft, WALLS: 223 sq. ft

Floor Plan Created By V1photos.com. Measurements Deamed Highly Reliable But Not Guaranteed.



Disclaimer: Sizes and Dimensions are Approximate, Actual May Vary.



Jodi Dolph
303-902-9968
jodi.dolph@kw.com
<https://www.TheDolphTeam.com>



Scan code
for more
property
details

