



2361 Locust Street
Denver, CO 80207
COMMUNITY: Mont View Park Add

MLS # 1785724
PRICE \$899,950



Single Family



2296 SQFT



3 Beds



2 Baths



2 Car



0.15 Acre

PROPERTY DETAILS

Located in the desirable Park Hill neighborhood, this updated 3-bedroom, 2-bath Tudor combines charm with modern convenience. It features a remodeled kitchen with stainless steel appliances, quartz countertops, and a designer backsplash. Both bathrooms have been tastefully renovated, enhancing the home's character. The layout includes two fireplaces for comfort and entertaining. Enjoy the front yard's Kentucky Coffee Tree and a private backyard with a pergola, plus a detached 2-car garage. Upgrades include new windows, attic insulation, a security system, and a sprinkler system. This move-in ready Tudor offers historic character and modern updates in a prime Denver location.



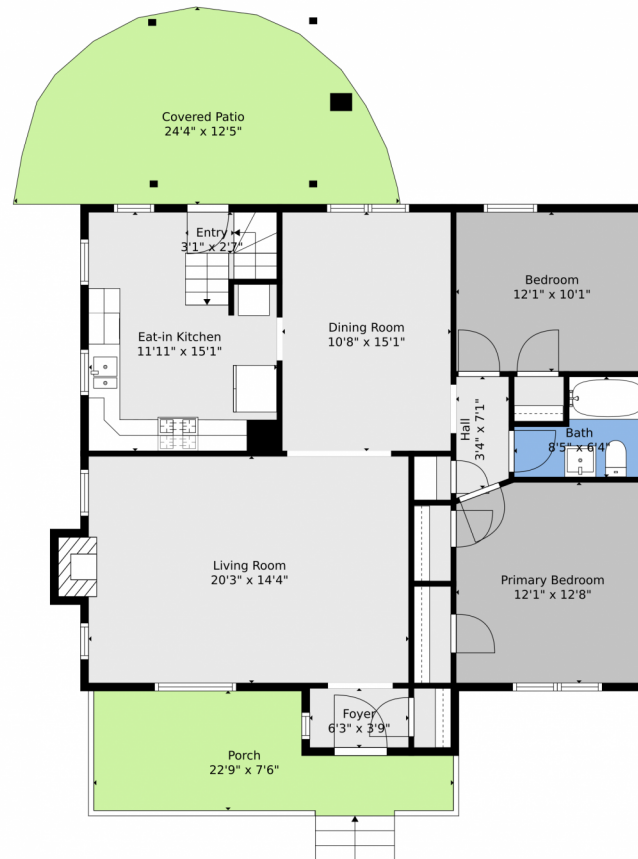
Steven Pilkington
303-587-0402
steven@pathhometeam.com



Scan code
for more
property
details



2361 Locust Street, Denver, CO 80207 – Main Level



TOTAL: 1878 sq. ft
BELOW GRADE: 788 sq. ft, FLOOR 2: 1090 sq. ft,
EXCLUDED AREAS: UTILITY: 303 sq. ft, FIREPLACE: 18 sq. ft, PORCH: 149 sq. ft,
COVERED PATIO: 235 sq. ft, WALLS: 135 sq. ft

Floor Plan Created By V1photos.com. Measurements Deamed Highly Reliable But Not Guaranteed.



Disclaimer: Sizes and Dimensions are Approximate, Actual May Vary.



Steven Pilkington
303-587-0402
steven@pathhometeam.com



Scan code
for more
property
details



2361 Locust Street, Denver, CO 80207 – Lower Level



TOTAL: 1878 sq. ft
BELOW GRADE: 788 sq. ft, FLOOR 2: 1090 sq. ft
EXCLUDED AREAS: UTILITY: 303 sq. ft, FIREPLACE: 18 sq. ft, PORCH: 149 sq. ft,
COVERED PATIO: 235 sq. ft, WALLS: 135 sq. ft

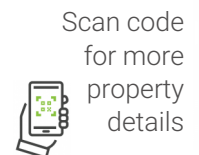
Floor Plan Created By V1photos.com. Measurements Deamed Highly Reliable But Not Guaranteed.



Disclaimer: Sizes and Dimensions are Approximate, Actual May Vary.



Steven Pilkington
303-587-0402
steven@pathhometeam.com



Scan code
for more
property
details



2361 Locust Street, Denver, CO 80207 – All Levels



TOTAL: 1878 sq. ft
 BELOW GRADE: 788 sq. ft, FLOOR 2: 1090 sq. ft,
 EXCLUDED AREAS: UTILITY: 303 sq. ft, FIREPLACE: 18 sq. ft, PORCH: 149 sq. ft,
 COVERED PATIO: 235 sq. ft, WALLS: 135 sq. ft

Floor Plan Created By V1photos.com. Measurements Deamed Highly Reliable But Not Guaranteed.



Disclaimer: Sizes and Dimensions are Approximate, Actual May Vary.



Steven Pilkington
 303-587-0402
 steven@pathhometeam.com



Scan code
 for more
 property
 details

