

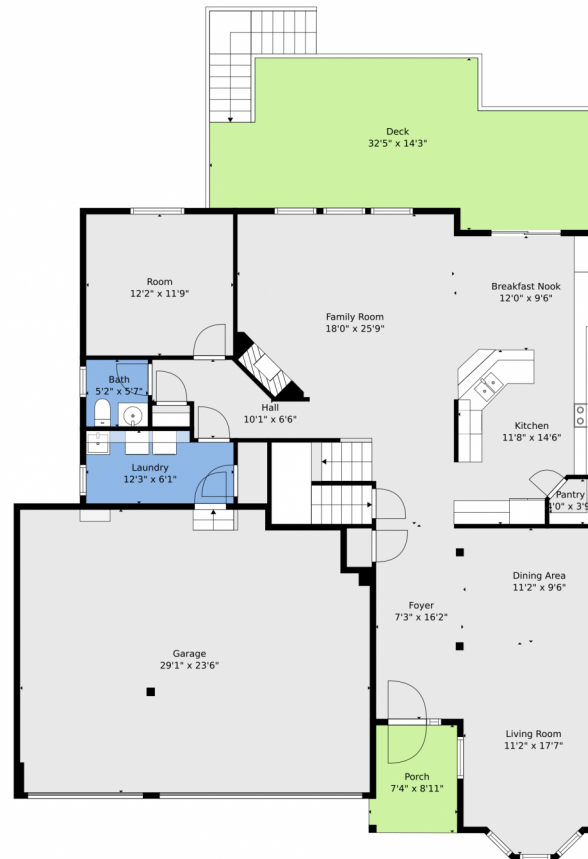
Taylor Haas
303-665-7368
taylorh@coloradorpm.com
<https://www.coloradorpm.com/available-rental-properties-denver>



Scan code
for more
property
details



23060 Hope Dale Avenue, Parker, CO 80138 — Main



TOTAL: 3927 sq. ft

BELOW GRADE: 975 sq. ft, FLOOR 2: 1469 sq. ft, FLOOR 3: 1483 sq. ft
EXCLUDED AREAS: UTILITY: 464 sq. ft, COVERED PATIO: 733 sq. ft, UNDEFINED: 9 sq. ft,
GARAGE: 661 sq. ft, DECK: 413 sq. ft, PORCH: 62 sq. ft,
WALLS: 312 sq. ft

Floor Plan Created By V1photos.com. Measurements Deamed Highly Reliable But Not Guaranteed.



Disclaimer: Sizes and Dimensions are Approximate, Actual May Vary.



Taylor Haas

303-665-7368

taylorh@coloradorpm.com

<https://www.coloradorpm.com/available-rental-properties-denver>



Scan code
for more
property
details



23060 Hope Dale Avenue, Parker, CO 80138 — 2nd Level



TOTAL: 3927 sq. ft

BELOW GRADE: 975 sq. ft, FLOOR 2: 1469 sq. ft, FLOOR 3: 1483 sq. ft
EXCLUDED AREAS: UTILITY: 464 sq. ft, COVERED PATIO: 733 sq. ft, UNDEFINED: 9 sq. ft,
GARAGE: 661 sq. ft, DECK: 413 sq. ft, PORCH: 62 sq. ft,
WALLS: 312 sq. ft

Floor Plan Created By V1photos.com. Measurements Deamed Highly Reliable But Not Guaranteed.



Disclaimer: Sizes and Dimensions are Approximate, Actual May Vary.



Taylor Haas

303-665-7368

taylorh@coloradorpm.com

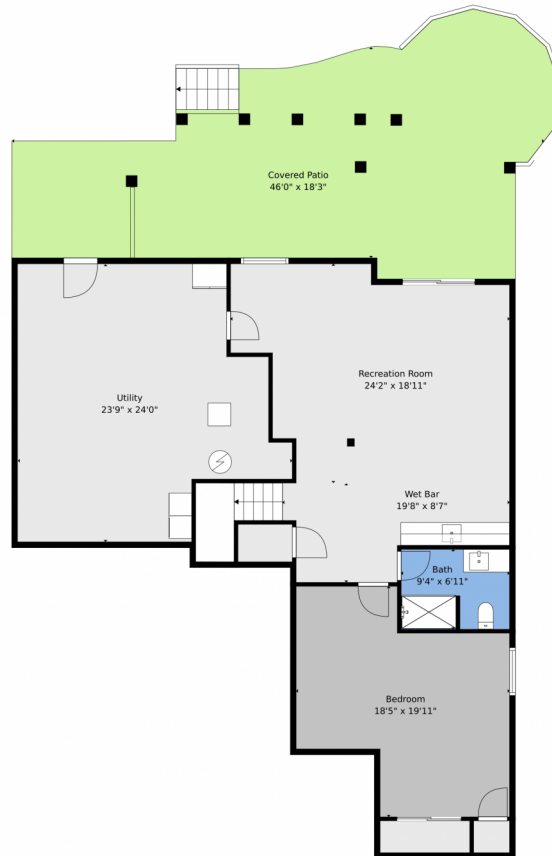
<https://www.coloradorpm.com/available-rental-properties-denver>



Scan code
for more
property
details



23060 Hope Dale Avenue, Parker, CO 80138 — Basement



TOTAL: 3927 sq. ft
BELOW GRADE: 975 sq. ft, FLOOR 2: 1469 sq. ft, FLOOR 3: 1483 sq. ft
EXCLUDED AREAS: UTILITY: 464 sq. ft, COVERED PATIO: 733 sq. ft, UNDEFINED: 9 sq. ft,
GARAGE: 661 sq. ft, DECK: 413 sq. ft, PORCH: 62 sq. ft,
WALLS: 312 sq. ft

Floor Plan Created By V1photos.com, Measurements Deamed Highly Reliable But Not Guaranteed.



Disclaimer: Sizes and Dimensions are Approximate, Actual May Vary.



Taylor Haas

303-665-7368

taylorh@coloradorpm.com

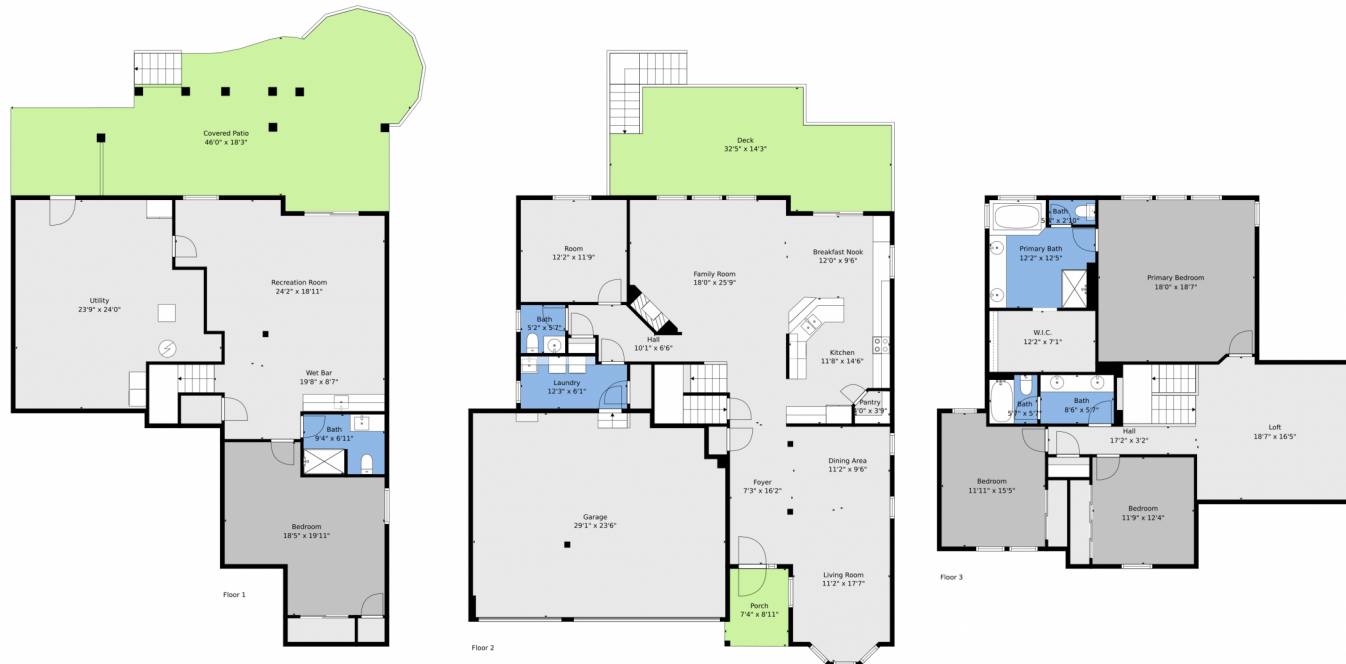
<https://www.coloradorpm.com/available-rental-properties-denver>



Scan code
for more
property
details



23060 Hope Dale Avenue, Parker, CO 80138 — All Levels



TOTAL: 3927 sq. ft
BELOW GRADE: 975 sq. ft, FLOOR 2: 1469 sq. ft, FLOOR 3: 1483 sq. ft
EXCLUDED AREAS: UTILITY: 464 sq. ft, COVERED PATIO: 733 sq. ft, UNDEFINED: 9 sq. ft,
GARAGE: 661 sq. ft, DECK: 413 sq. ft, PORCH: 62 sq. ft,
WALLS: 312 sq. ft

Floor Plan Created By V1photos.com, Measurements Deamed Highly Reliable But Not Guaranteed.



Disclaimer: Sizes and Dimensions are Approximate, Actual May Vary.



Taylor Haas

303-665-7368

taylorh@coloradorpm.com

<https://www.coloradorpm.com/available-rental-properties-denver>



Scan code
for more
property
details

