



Single Family



2291 SQFT



4 Beds



3/1 Baths



2 Car



0.13 Acre

## PROPERTY DETAILS

If you value indoor/outdoor living with stunning panoramic views and privacy, this home is a must-see! The living room and kitchen feature center closing sliding glass doors leading to a spacious deck overlooking beautiful trails. The main level includes luxury vinyl flooring, a large kitchen island, and a butler's pantry. This home offers 4 bedrooms and 4 bathrooms, including a finished basement with an additional living room, bedroom, and full bath. Located on a pie-shaped lot with no homes behind, it ensures privacy. Over \$50K has been invested in exterior improvements, including a landscaped yard and a stamped concrete patio. The Canyons community offers fantastic amenities like a clubhouse, fitness studios, a resort-style pool, and scenic trails. This home is move-in ready with all systems just over a year old.



**Meg Bente**  
720-939-5184  
meg.bente@windermere.com



Scan code  
for more  
property  
details



6906 Oak Canyon Circle, Castle Pines, CO 80108 — Main



**TOTAL: 2251 sq. ft**  
BELOW GRADE: 615 sq. ft, FLOOR 2: 721 sq. ft, FLOOR 3: 915 sq. ft  
EXCLUDED AREAS: UTILITY: 106 sq. ft, PATIO: 381 sq. ft, COVERED PATIO: 169 sq. ft,  
GARAGE: 471 sq. ft, PORCH: 60 sq. ft, COVERED DECK: 225 sq. ft,  
WALLS: 221 sq. ft

Floor Plan Created By V1photos.com. Measurements Deamed Highly Reliable But Not Guaranteed.



Disclaimer: Sizes and Dimensions are Approximate, Actual May Vary.



**Meg Bente**  
720-939-5184  
meg.bente@windermere.com



6906 Oak Canyon Circle, Castle Pines, CO 80108 – 2nd Level



**TOTAL: 2251 sq. ft**  
BELOW GRADE: 615 sq. ft, FLOOR 2: 721 sq. ft, FLOOR 3: 915 sq. ft  
EXCLUDED AREAS: UTILITY: 106 sq. ft, PATIO: 381 sq. ft, COVERED PATIO: 169 sq. ft,  
GARAGE: 471 sq. ft, PORCH: 60 sq. ft, COVERED DECK: 225 sq. ft,  
WALLS: 221 sq. ft

Floor Plan Created By V1photos.com. Measurements Deamed Highly Reliable But Not Guaranteed.



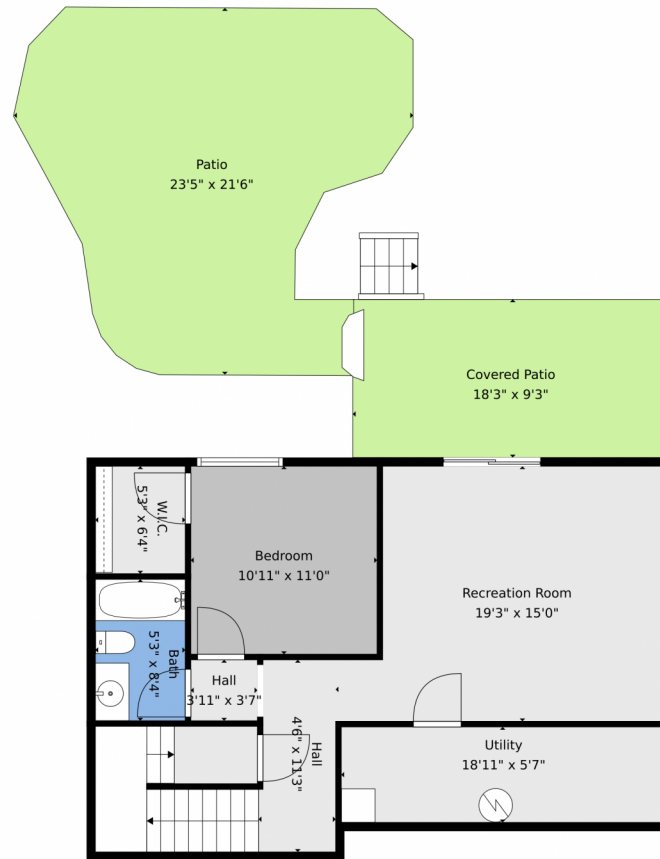
Disclaimer: Sizes and Dimensions are Approximate, Actual May Vary.



**Meg Bente**  
720-939-5184  
meg.bente@windermere.com



6906 Oak Canyon Circle, Castle Pines, CO 80108 — Lower Level



**TOTAL: 2251 sq. ft**  
BELOW GRADE: 615 sq. ft, FLOOR 2: 721 sq. ft, FLOOR 3: 915 sq. ft  
EXCLUDED AREAS: UTILITY: 106 sq. ft, PATIO: 381 sq. ft, COVERED PATIO: 169 sq. ft,  
GARAGE: 471 sq. ft, PORCH: 60 sq. ft, COVERED DECK: 225 sq. ft,  
WALLS: 221 sq. ft

Floor Plan Created By V1photos.com. Measurements Deamed Highly Reliable But Not Guaranteed.



Disclaimer: Sizes and Dimensions are Approximate, Actual May Vary.



**Meg Bente**  
720-939-5184  
meg.bente@windermere.com



# 6906 Oak Canyon Circle, Castle Pines, CO 80108 – All Levels



**TOTAL: 2251 sq. ft**  
BELOW GRADE: 615 sq. ft, FLOOR 2: 721 sq. ft, FLOOR 3: 915 sq. ft  
EXCLUDED AREAS: UTILITY: 106 sq. ft, PATIO: 381 sq. ft, COVERED PATIO: 169 sq. ft,  
GARAGE: 471 sq. ft, PORCH: 60 sq. ft, COVERED DECK: 225 sq. ft,  
WALLS: 221 sq. ft

Floor Plan Created By V1photos.com. Measurements Deamed Highly Reliable But Not Guaranteed.



Disclaimer: Sizes and Dimensions are Approximate, Actual May Vary.



**Meg Bente**  
720-939-5184  
meg.bente@windermere.com

