



23161 Timber Spring Place
Parker, CO 80138
COMMUNITY: Canterbury Crossing

MLS # 9830169
PRICE \$725,000



Single Family



3676 SQFT



5 Beds



4 Baths



3 Car



0.26 Acre

PROPERTY DETAILS

Welcome to this five-bedroom, four-bathroom home in Canterbury Crossing! This move-in-ready home offers many upgrades, including fresh exterior and interior paint, new landscaping, new carpet and more! Upon entering, you will be greeted by an office space, ideal for those who work from home! The living room features a ceiling fan and large windows with plantation shutters that fill the space with natural light. Plenty of space and anchored by a charming fireplace. Venture to the eat-in kitchen, which is truly a dream and offers spacious countertops, ample amounts of cabinetry, and an open concept. Plus, all stainless steel appliances are included with the home, talk about move-in ready! A main-level bedroom is perfect for guests, with easy access to a full bathroom. The laundry room completes the main level, ready to tackle any mess that may come your way! Upstairs, the primary oasis offers plenty of natural light and space for any furniture design layout you can imagine. The en-suite bathroom offers a double vanity, soaking tub, walk-in shower, and a walk-in closet. Two additional bedrooms and a bathroom complete the upper level. Your finished basement offers a great room area, ideal for an additional living area, movie room, game room, or playroom, and a convenient kitchenette, making entertaining a breeze. You'll also find a full bathroom and a fifth bedroom in the basement, how perfect! Outside, you will find your backyard oasis offering a spacious



Tatyana Sturm

720-350-5909

tatyana@exitrealtydtc.com

<https://thestorckteam.com>

Scan code
for more
property
details



covered patio, great for outdoor entertaining and a large grass area! Enjoy the many community amenities, including a playground, walking trails, tennis courts and a sparkling community pool. Prime location offering easy access to just about anywhere, including I-25, E-470, Denver International Airport and more! Ample amounts of shopping, dining and entertainment options are also just a quick drive away and include Black Bear Golf Club, Parker Pavilions Shopping Center and the historic Main Street in Downtown Parker.



Tatyana Sturm
720-350-5909
tatyana@exitrealtydtc.com
<https://thestorckteam.com>



Scan code
for more
property
details



23161 Timber Spring Place, Parker, CO 80138 — Main



TOTAL: 2973 sq. ft
BELOW GRADE: 816 sq. ft, FLOOR 2: 1248 sq. ft, FLOOR 3: 909 sq. ft
EXCLUDED AREAS: UTILITY: 171 sq. ft, GARAGE: 586 sq. ft, PATIO: 520 sq. ft,
PORCH: 118 sq. ft, WALLS: 261 sq. ft

Floor Plan Created By V1photos.com. Measurements Deamed Highly Reliable But Not Guaranteed.

Disclaimer: Sizes and Dimensions are Approximate, Actual May Vary.

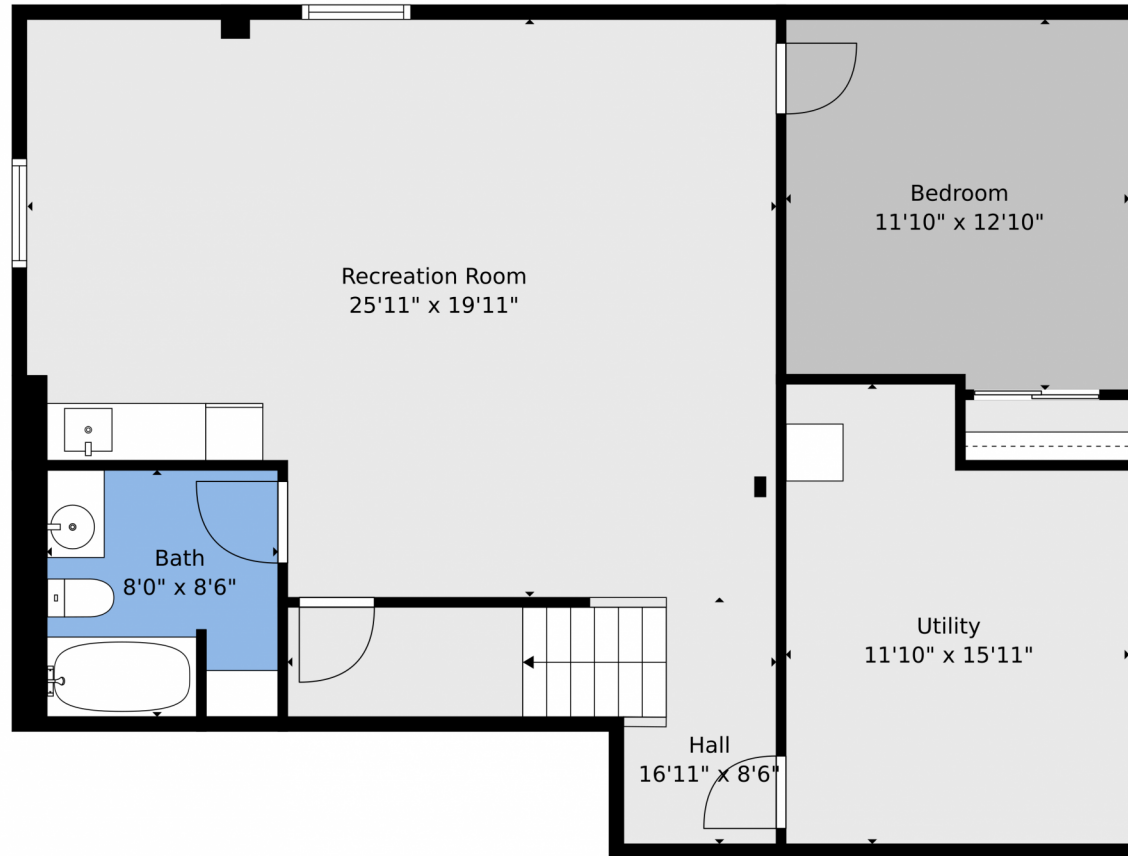


Tatyana Sturm
720-350-5909
tatyana@exitrealtydtc.com
<https://thestorckteam.com>



Scan code
for more
property
details





TOTAL: 2973 sq. ft
BELOW GRADE: 816 sq. ft, FLOOR 2: 1248 sq. ft, FLOOR 3: 909 sq. ft
EXCLUDED AREAS: UTILITY: 171 sq. ft, GARAGE: 586 sq. ft, PATIO: 520 sq. ft,
PORCH: 118 sq. ft, WALLS: 261 sq. ft

Floor Plan Created By V1photos.com. Measurements Deamed Highly Reliable But Not Guaranteed.



Disclaimer: Sizes and Dimensions are Approximate, Actual May Vary.



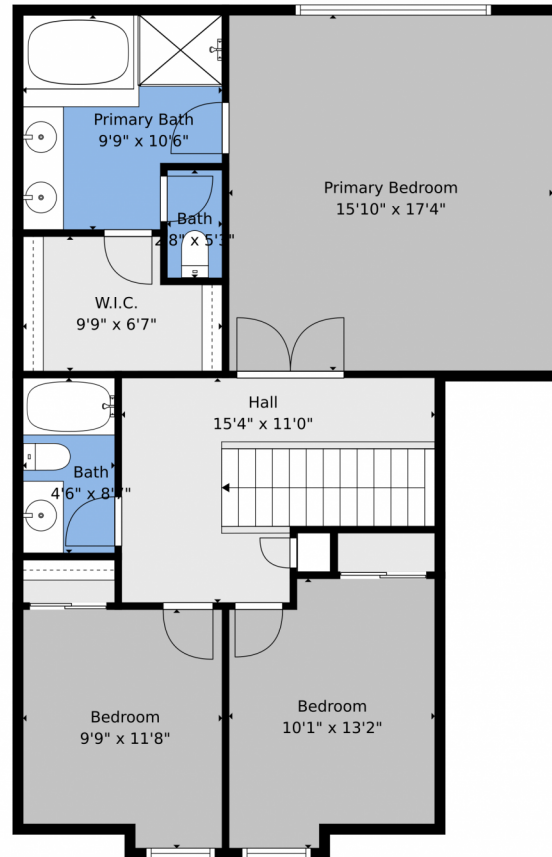
Tatyana Sturm
720-350-5909
tatyana@exitrealtydtc.com
<https://thestorckteam.com>



Scan code
for more
property
details



23161 Timber Spring Place, Parker, CO 80138 — floorplan_single_2



TOTAL: 2973 sq. ft
BELOW GRADE: 816 sq. ft, FLOOR 2: 1248 sq. ft, FLOOR 3: 909 sq. ft
EXCLUDED AREAS: UTILITY: 171 sq. ft, GARAGE: 586 sq. ft, PATIO: 520 sq. ft,
PORCH: 118 sq. ft, WALLS: 261 sq. ft

Floor Plan Created By V1photos.com. Measurements Deamed Highly Reliable But Not Guaranteed.



Disclaimer: Sizes and Dimensions are Approximate, Actual May Vary.



Tatyana Sturm
720-350-5909
tatyana@exitrealtydtc.com
<https://thestorckteam.com>



Scan code
for more
property
details



23161 Timber Spring Place, Parker, CO 80138 — floorplan_all_0



TOTAL: 2973 sq. ft
BELOW GRADE: 816 sq. ft, FLOOR 2: 1248 sq. ft, FLOOR 3: 909 sq. ft
EXCLUDED AREAS: UTILITY: 171 sq. ft, GARAGE: 586 sq. ft, PATIO: 520 sq. ft,
PORCH: 118 sq. ft, WALLS: 261 sq. ft

Floor Plan Created By V1photos.com. Measurements Deamed Highly Reliable But Not Guaranteed.



Disclaimer: Sizes and Dimensions are Approximate, Actual May Vary.



Tatyana Sturm
720-350-5909
tatyana@exitrealttydtc.com
<https://thestorckteam.com>



Scan code
for more
property
details

