



10533 Paris Street #606
Commerce City, CO 80640
COMMUNITY: Bonneyview at Aberdeen



Townhouse



1494 SQFT



2 Beds



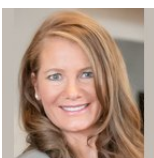
2/1 Baths



2 Car



0.11 Acre



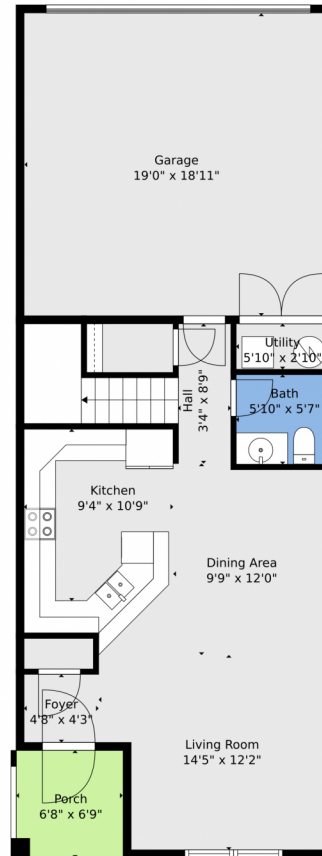
Christina Kern
303-915-0809
ckernsells@gmail.com



Scan code
for more
property
details



10533 Paris Street #606, Commerce City, CO 80640 — Main

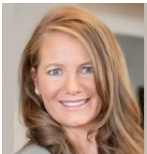


TOTAL: 1482 sq. ft
BELOW GRADE: 566 sq. ft, FLOOR 2: 916 sq. ft
EXCLUDED AREAS: UTILITY: 17 sq. ft, GARAGE: 361 sq. ft, PORCH: 45 sq. ft,
WALLS: 99 sq. ft

Floor Plan Created By V1photos.com, Measurements Deamed Highly Reliable But Not Guaranteed.



Disclaimer: Sizes and Dimensions are Approximate, Actual May Vary.



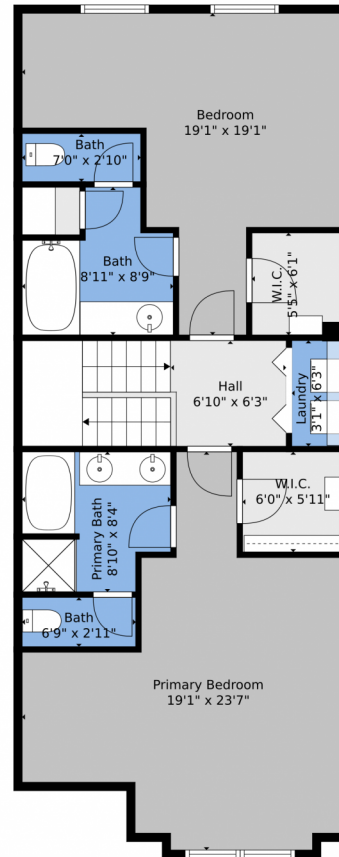
Christina Kern
303-915-0809
ckernsells@gmail.com



Scan code
for more
property
details



10533 Paris Street #606, Commerce City, CO 80640 — 2nd Level

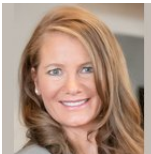


TOTAL: 1482 sq. ft
BELOW GRADE: 566 sq. ft, FLOOR 2: 916 sq. ft
EXCLUDED AREAS: UTILITY: 17 sq. ft, GARAGE: 361 sq. ft, PORCH: 45 sq. ft,
WALLS: 99 sq. ft

Floor Plan Created By V1photos.com, Measurements Deamed Highly Reliable But Not Guaranteed.



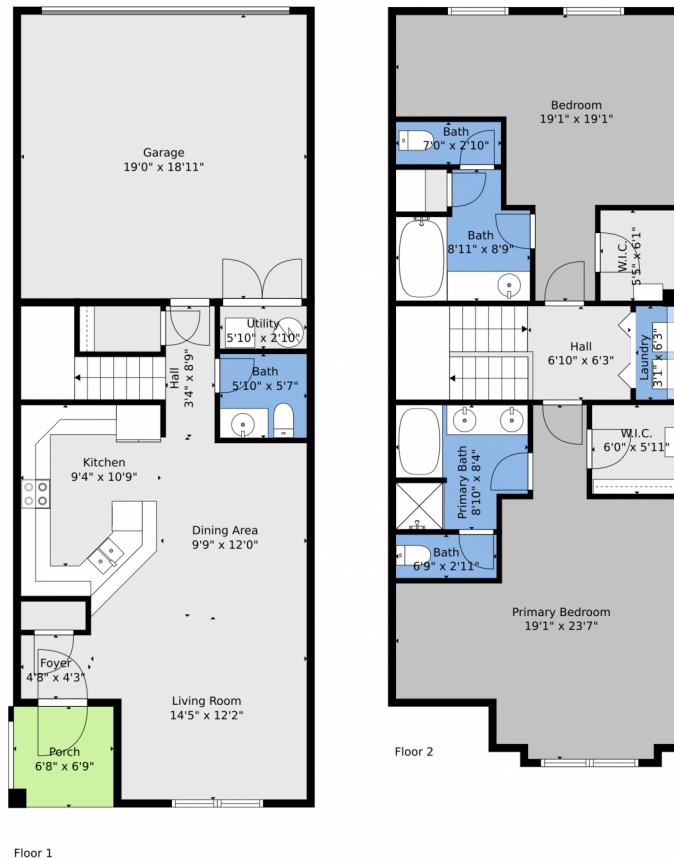
Disclaimer: Sizes and Dimensions are Approximate, Actual May Vary.



Christina Kern
303-915-0809
ckernsells@gmail.com



10533 Paris Street #606, Commerce City, CO 80640 — All Levels

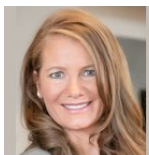


TOTAL: 1482 sq. ft
 BELOW GRADE: 566 sq. ft, FLOOR 2: 916 sq. ft
 EXCLUDED AREAS: UTILITY: 17 sq. ft, GARAGE: 361 sq. ft, PORCH: 45 sq. ft,
 WALLS: 99 sq. ft

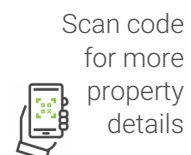
Floor Plan Created By V1photos.com, Measurements Deamed Highly Reliable But Not Guaranteed.



Disclaimer: Sizes and Dimensions are Approximate, Actual May Vary.



Christina Kern
 303-915-0809
 ckernsells@gmail.com



Scan code
 for more
 property
 details

