



2889 High Prairie Way  
 Broomfield, CO 80023  
**COMMUNITY:** Spruce Meadows

**PRICE** \$3,599,000



Single Family



6615 SQFT



5 Beds



6 Baths



4 Car



1.85 Acre

## PROPERTY DETAILS

Revel in Luxury! Located in the exclusive Spruce Meadows neighborhood, this remarkable luxury residence sits on nearly two acres of beautifully landscaped grounds, offering privacy, elegance, and a sense of serenity. The home is positioned well back from the street, creating an impressive and refined arrival. You enter into a grand spacious open floor plan designed for seamless movement, with the gourmet kitchen serving as the heart of the home. It's ideal for both daily living and sophisticated entertainment. Outdoors, the estate feels like a private resort, boasting a sprawling backyard retreat with a covered patio, resort-like pool, modern glass fireplace, bocce ball court, wood-burning fireplace, and a fully-equipped outdoor kitchen with a built-in grill, refrigerator, and a large granite island—perfect for year-round entertaining in Colorado.

Escape to the primary suite—a tranquil sanctuary set on its own level, featuring a gas fireplace, stone benches, and expansive views. Unwind in the steam shower or whirlpool found in the luxurious master bath. Upstairs, three well-appointed bedrooms offer private retreats with their own en-suite bathrooms and walk-in closets, ensuring comfort and convenience for all. Whether welcoming guests or accommodating family, every space is designed with purpose and elegance.



**Julie Leins**  
 720-474-0928  
 julieleins@kw.com  
<https://theleinsgroup.com>



Scan code  
 for more  
 property  
 details



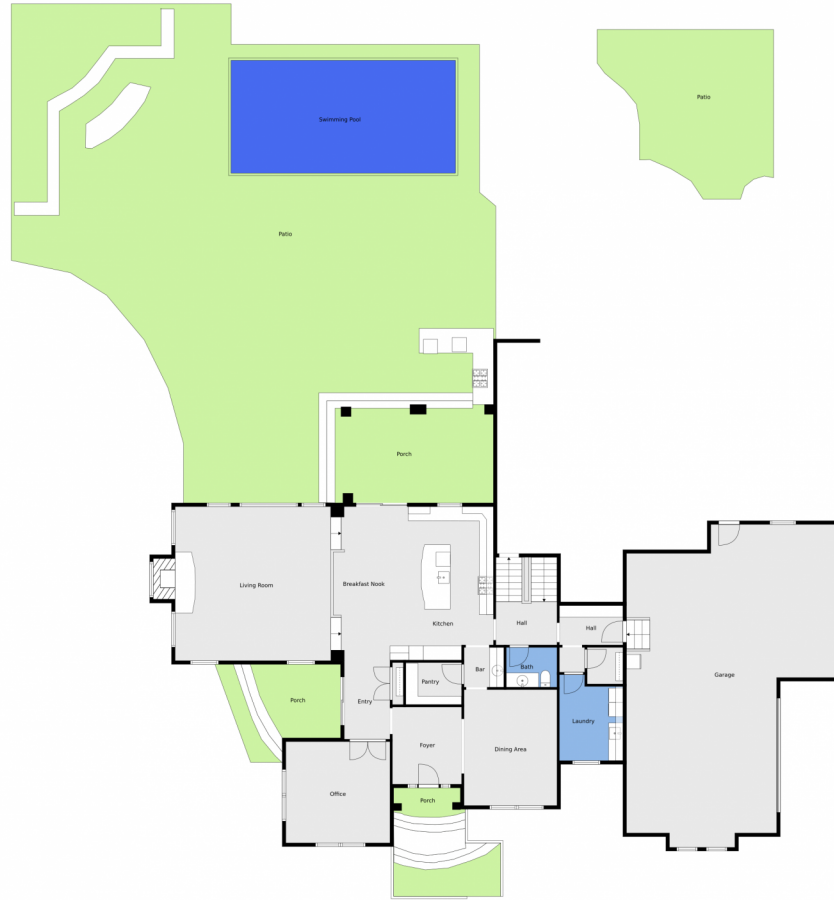
The spacious guest suite on the garden level includes a private bathroom and direct access outdoors, perfect for easy indoor-outdoor living. The lower entertainment level emphasizes relaxation and privacy, incorporating an electric fireplace, a large recreation area, and spaces for family enjoyment. Additional features include an oversized four-car garage, and remarkable views. This exceptional home is ideally located just 25 minutes from DIA, downtown Denver, and Boulder.

2889 High Prairie Way represents more than an address—it's a luxurious estate shaped by thoughtful design, ample space, and uncompromising refined living.



**Julie Leins**  
720-474-0928  
julieleins@kw.com  
<https://theleinsgroup.com>





Floor Plan Created By V1photos.com, Measurements Deamed Highly Reliable, But Not Guaranteed.

Disclaimer: Sizes and Dimensions are Approximate, Actual May Vary.



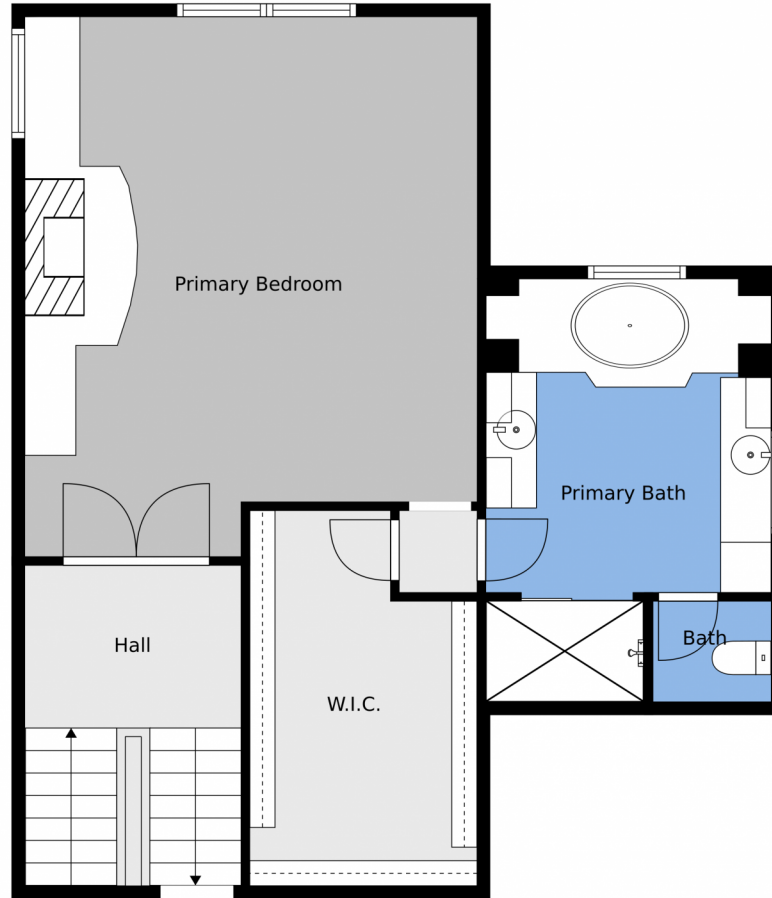
**Julie Leins**  
720-474-0928  
julieleins@kw.com  
<https://theleinsgroup.com>



Scan code  
for more  
property  
details



2889 High Prairie Way, Broomfield, CO 80023 – 2nd Level



Floor Plan Created By V1photos.com, Measurements Deamed Highly Reliable, But Not Guaranteed.



Disclaimer: Sizes and Dimensions are Approximate, Actual May Vary.



**Julie Leins**  
720-474-0928  
julieleins@kw.com  
<https://theleinsgroup.com>



2889 High Prairie Way, Broomfield, CO 80023 – 3rd Level



Floor Plan Created By V1photos.com, Measurements Deamed Highly Reliable, But Not Guaranteed.



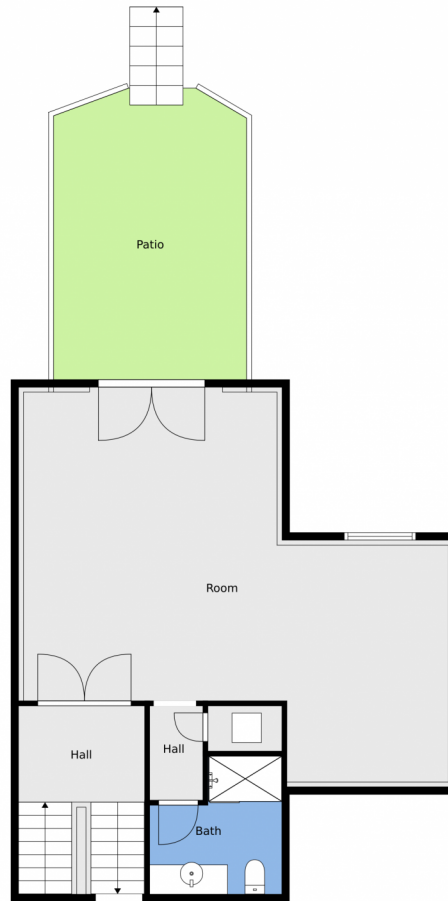
Disclaimer: Sizes and Dimensions are Approximate, Actual May Vary.



**Julie Leins**  
720-474-0928  
julieleins@kw.com  
<https://theleinsgroup.com>



2889 High Prairie Way, Broomfield, CO 80023 – Lower Level



Floor Plan Created By V1photos.com, Measurements Deamed Highly Reliable, But Not Guaranteed.



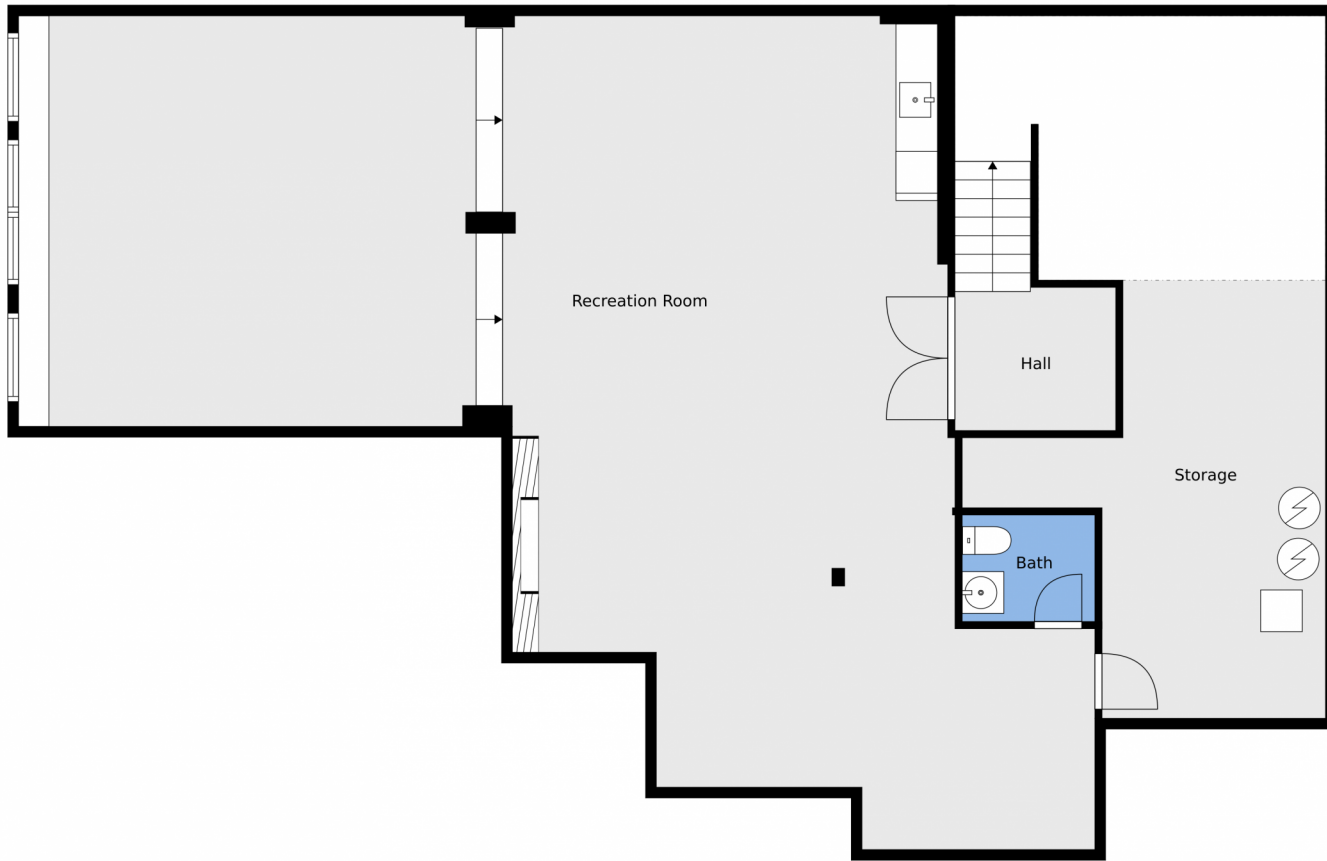
Disclaimer: Sizes and Dimensions are Approximate, Actual May Vary.



**Julie Leins**  
720-474-0928  
julieleins@kw.com  
<https://theleinsgroup.com>



2889 High Prairie Way, Broomfield, CO 80023 – Basement



Floor Plan Created By V1photos.com, Measurements Deamed Highly Reliable, But Not Guaranteed.



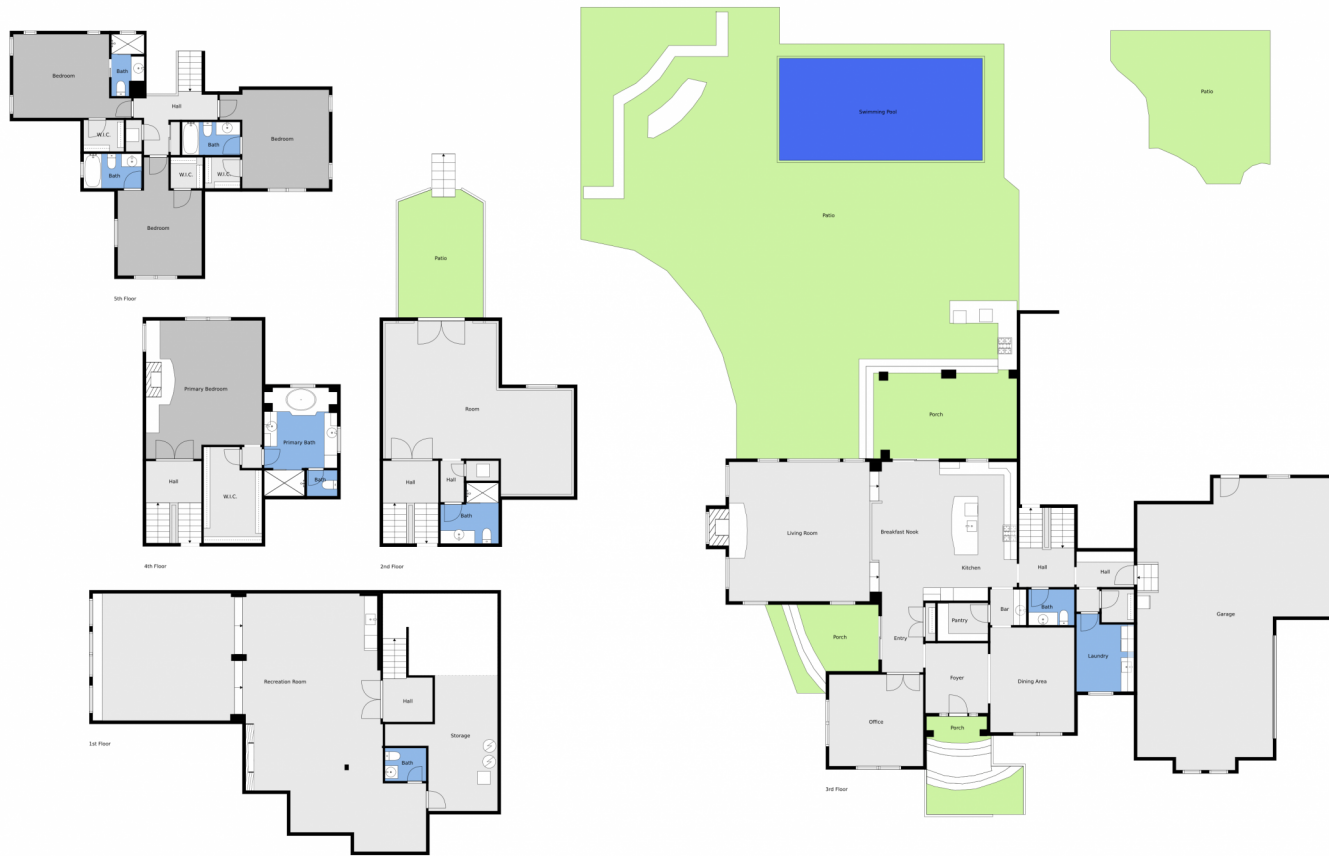
Disclaimer: Sizes and Dimensions are Approximate, Actual May Vary.



**Julie Leins**  
720-474-0928  
julieleins@kw.com  
<https://theleinsgroup.com>



# 2889 High Prairie Way, Broomfield, CO 80023 – All Levels



Floor Plan Created By V1photos.com, Measurements Deamed Highly Reliable, But Not Guaranteed.



Disclaimer: Sizes and Dimensions are Approximate, Actual May Vary.



**Julie Leins**  
720-474-0928  
julieleins@kw.com  
<https://theleinsgroup.com>



Scan code  
for more  
property  
details

