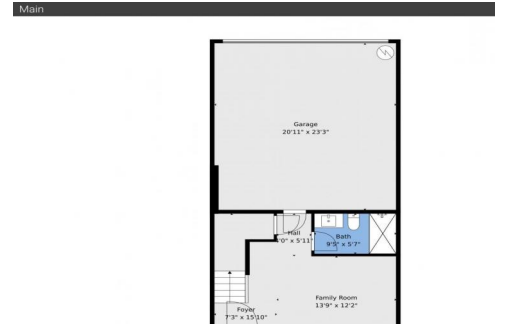




12689 Machiavelli Way
Palm Beach Gardens, FL 33418
COMMUNITY: ALTON NEIGHBORHOOD

MLS # R11138539
PRICE \$890,000



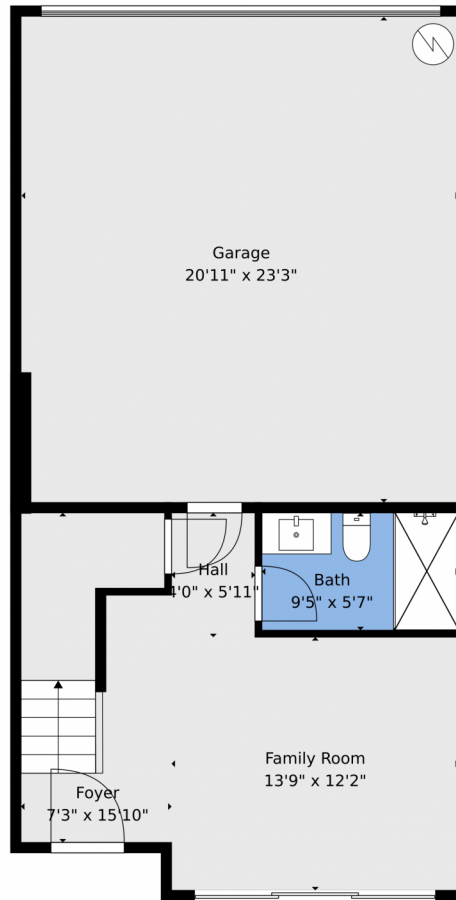
Townhouse 3102 SQFT 3 Beds 3/1 Baths 2 Car 0.04 Acre



Jason M Coley
772-201-5229
jason@teamcoley.com
<https://teamcoley.asrefl.com/>



12689 Machiavelli Way, Palm Beach Gardens, FL 33418 — Main



Floor Plan Created By V1photos.com, Measurements Deamed Highly Reliable, But Not Guaranteed.



Disclaimer: Sizes and Dimensions are Approximate, Actual May Vary.



Jason M Coley
772-201-5229
jason@teamcoley.com
<https://teamcoley.asrefl.com/>



Scan code
for more
property
details



12689 Machiavelli Way, Palm Beach Gardens, FL 33418 — 2nd Level



Floor Plan Created By V1photos.com, Measurements Deamed Highly Reliable, But Not Guaranteed.



Disclaimer: Sizes and Dimensions are Approximate, Actual May Vary.



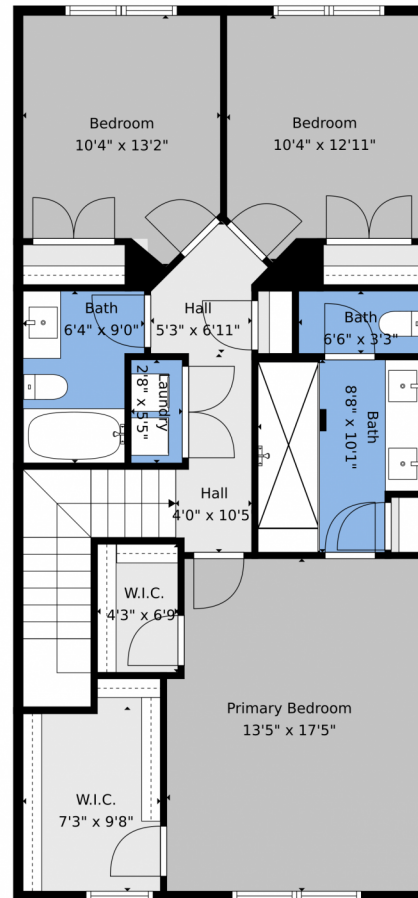
Jason M Coley
772-201-5229
jason@teamcoley.com
<https://teamcoley.asrefl.com/>



Scan code
for more
property
details



12689 Machiavelli Way, Palm Beach Gardens, FL 33418 — 3rd Level



Floor Plan Created By V1photos.com, Measurements Deamed Highly Reliable, But Not Guaranteed.



Disclaimer: Sizes and Dimensions are Approximate, Actual May Vary.



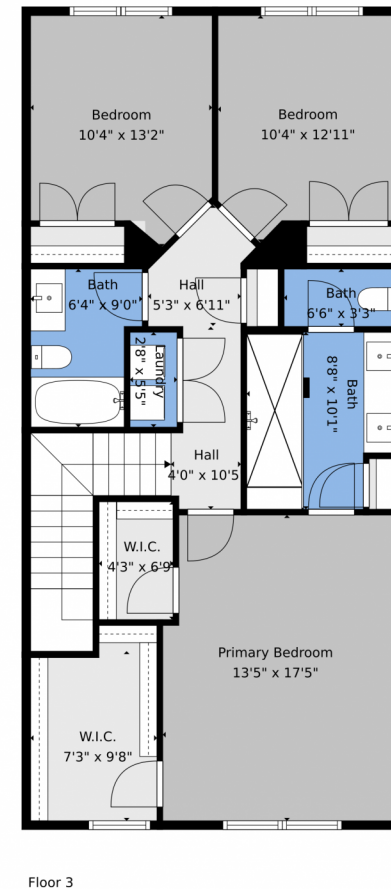
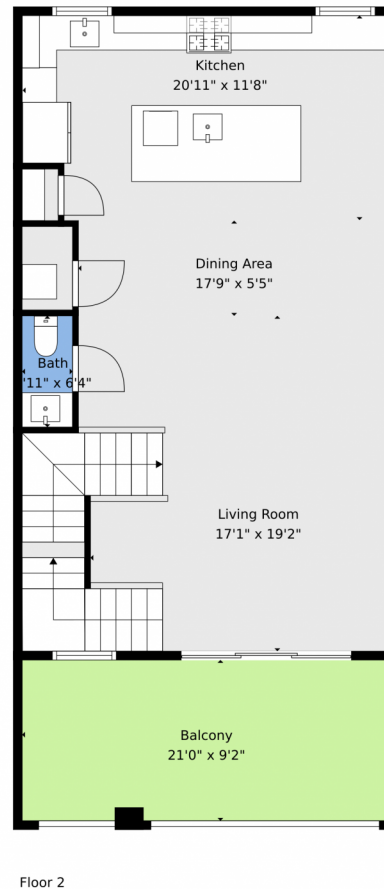
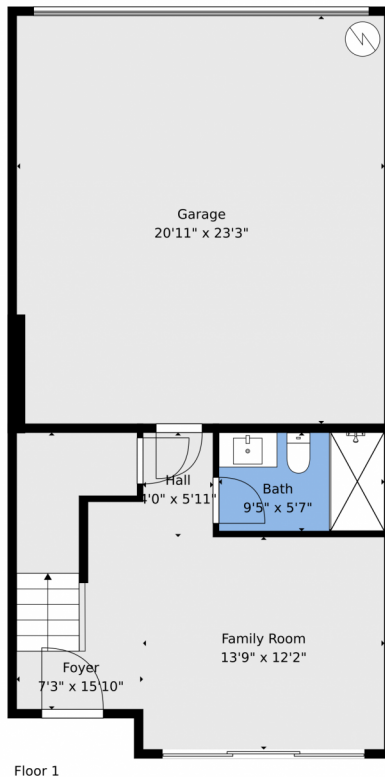
Jason M Coley
772-201-5229
jason@teamcoley.com
<https://teamcoley.asrefl.com/>



Scan code
for more
property
details



12689 Machiavelli Way, Palm Beach Gardens, FL 33418 — All Levels



Floor Plan Created By V1photos.com, Measurements Deamed Highly Reliable, But Not Guaranteed.



Disclaimer: Sizes and Dimensions are Approximate, Actual May Vary.



Jason M Coley
772-201-5229
jason@teamcoley.com
<https://teamcoley.asrefl.com/>



Scan code
for more
property
details

