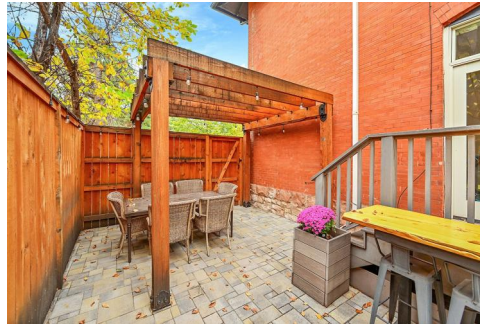




1432 Clayton Street
Denver, CO 80206
COMMUNITY: Congress Park

MLS # 9862041
PRICE \$950,000



Single Family



2664 SQFT



4 Beds



2/1 Baths



1 Car



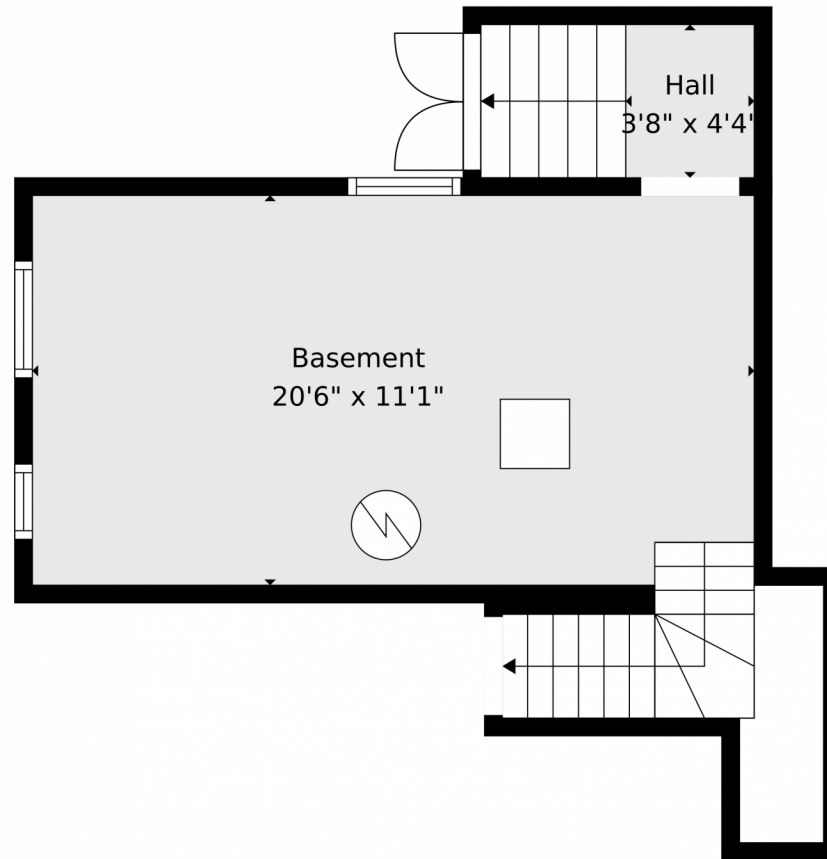
0.09 Acre

Trish Kelly
720-331-6377
trish@trishkelly.com
<https://www.trishkelly.com>



Scan code
for more
property
details



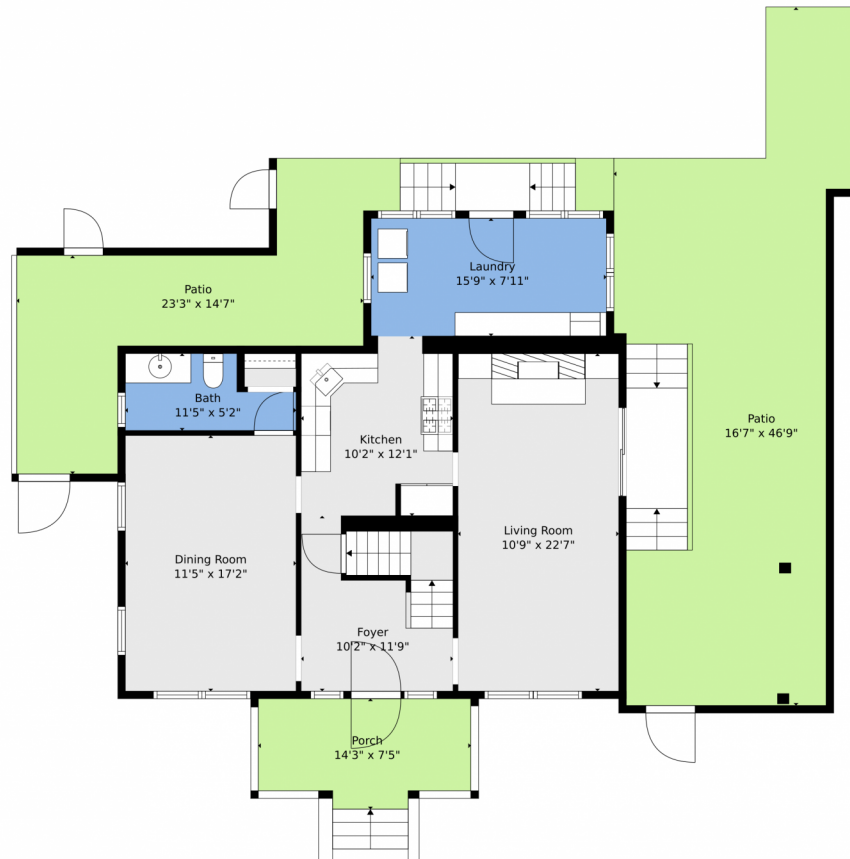


TOTAL: 2188 sq. ft
BELOW GRADE: 38 sq. ft, FLOOR 2: 891 sq. ft, FLOOR 3: 892 sq. ft, FLOOR 4: 367 sq. ft, FLOOR 5: 0 sq. ft
EXCLUDED AREAS: BASEMENT: 270 sq. ft, PORCH: 94 sq. ft, PATIO: 867 sq. ft,
LOW CEILING: 93 sq. ft, GARAGE: 286 sq. ft, WALLS: 311 sq. ft

Floor Plan Created By V1photos.com. Measurements Deamed Highly Reliable But Not Guaranteed.



Disclaimer: Sizes and Dimensions are Approximate, Actual May Vary.



TOTAL: 2188 sq. ft
BELOW GRADE: 38 sq. ft, FLOOR 2: 891 sq. ft, FLOOR 3: 892 sq. ft, FLOOR 4: 367 sq. ft, FLOOR 5: 0 sq. ft
EXCLUDED AREAS: BASEMENT: 270 sq. ft, PORCH: 94 sq. ft, PATIO: 867 sq. ft,
LOW CEILING: 93 sq. ft, GARAGE: 286 sq. ft, WALLS: 311 sq. ft

Floor Plan Created By V1photos.com. Measurements Deamed Highly Reliable But Not Guaranteed.



Disclaimer: Sizes and Dimensions are Approximate, Actual May Vary.



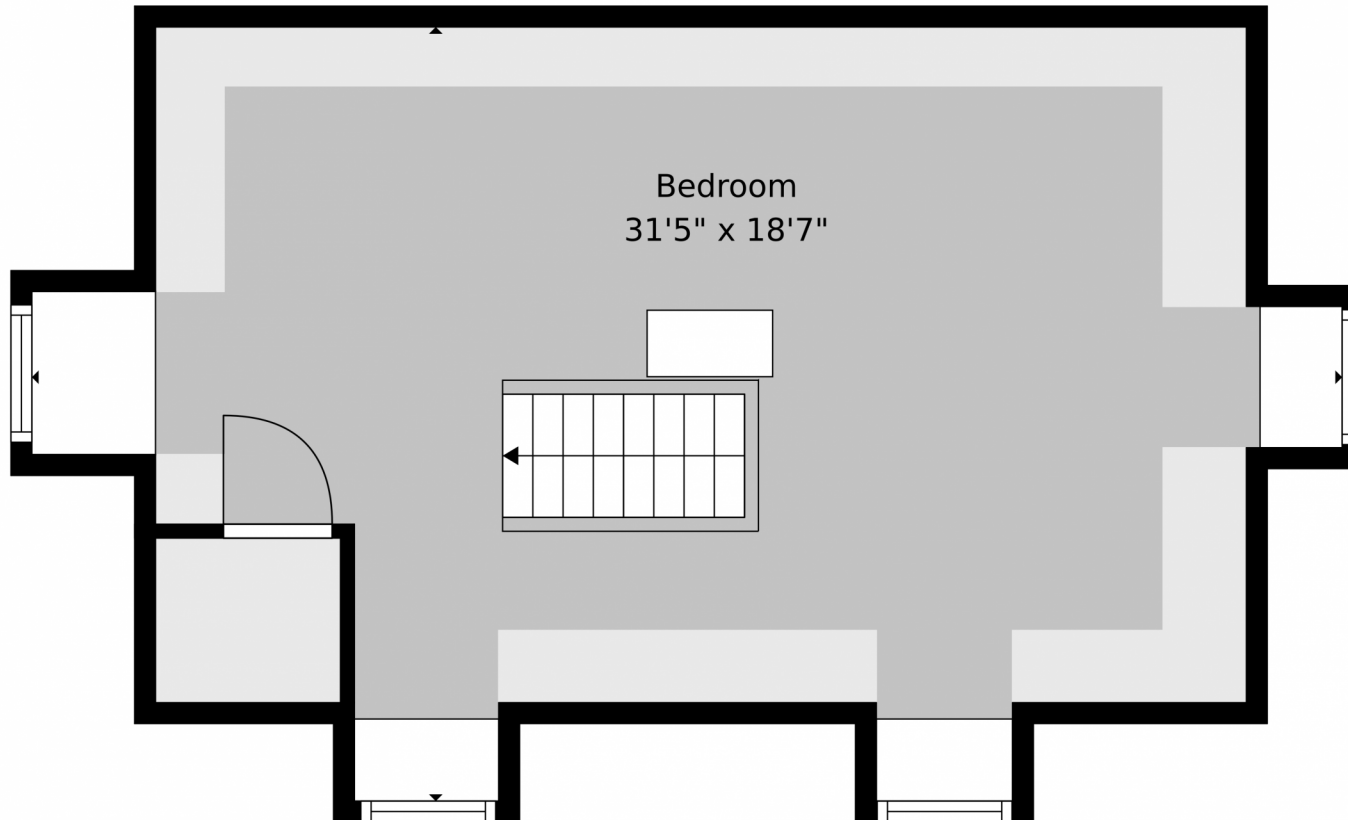
TOTAL: 2188 sq. ft

BELOW GRADE: 38 sq. ft, FLOOR 2: 891 sq. ft, FLOOR 3: 892 sq. ft, FLOOR 4: 367 sq. ft, FLOOR 5: 0 sq. ft
EXCLUDED AREAS: BASEMENT: 270 sq. ft, PORCH: 94 sq. ft, PATIO: 867 sq. ft,
LOW CEILING: 93 sq. ft, GARAGE: 286 sq. ft, WALLS: 311 sq. ft

Floor Plan Created By V1photos.com. Measurements Deamed Highly Reliable But Not Guaranteed.



Disclaimer: Sizes and Dimensions are Approximate, Actual May Vary.

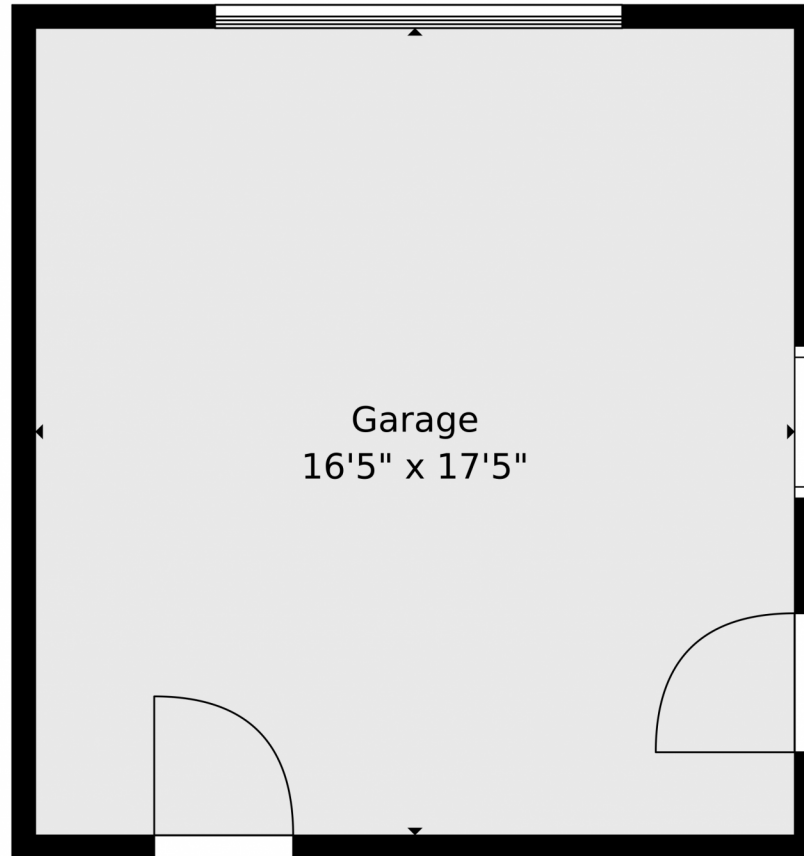


TOTAL: 2188 sq. ft
BELOW GRADE: 38 sq. ft, FLOOR 2: 891 sq. ft, FLOOR 3: 892 sq. ft, FLOOR 4: 367 sq. ft, FLOOR 5: 0 sq. ft
EXCLUDED AREAS: BASEMENT: 270 sq. ft, PORCH: 94 sq. ft, PATIO: 867 sq. ft,
LOW CEILING: 93 sq. ft, GARAGE: 286 sq. ft, WALLS: 311 sq. ft

Floor Plan Created By V1photos.com. Measurements Deamed Highly Reliable But Not Guaranteed.



Disclaimer: Sizes and Dimensions are Approximate, Actual May Vary.



TOTAL: 2188 sq. ft
BELOW GRADE: 38 sq. ft, FLOOR 2: 891 sq. ft, FLOOR 3: 892 sq. ft, FLOOR 4: 367 sq. ft, FLOOR 5: 0 sq. ft
EXCLUDED AREAS: BASEMENT: 270 sq. ft, PORCH: 94 sq. ft, PATIO: 867 sq. ft,
LOW CEILING: 93 sq. ft, GARAGE: 286 sq. ft, WALLS: 311 sq. ft

Floor Plan Created By V1photos.com. Measurements Deamed Highly Reliable But Not Guaranteed.



Disclaimer: Sizes and Dimensions are Approximate, Actual May Vary.

1432 Clayton Street, Denver, CO 80206 — floorplan_all_0



TOTAL: 2188 sq. ft
BELOW GRADE: 38 sq. ft, FLOOR 2: 891 sq. ft, FLOOR 3: 892 sq. ft, FLOOR 4: 367 sq. ft, FLOOR 5: 0 sq. ft
EXCLUDED AREAS: BASEMENT: 270 sq. ft, PORCH: 94 sq. ft, PATIO: 867 sq. ft,
LOW CEILING: 93 sq. ft, GARAGE: 286 sq. ft, WALLS: 311 sq. ft

Floor Plan Created By V1photos.com. Measurements Deamed Highly Reliable But Not Guaranteed.



Disclaimer: Sizes and Dimensions are Approximate, Actual May Vary.