




2408 Concord Circle
Lafayette, CO 80026

PRICE \$549,000


Desired Townhome in Indian Peaks



 Townhouse

 1824 SQFT

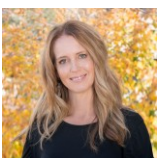
 3 Beds

 2/1 Baths

 2 Car

PROPERTY DETAILS

Enjoy breathtaking views of Longs Peak from your private front patio and spacious primary suite. Located in the desirable Indian Peaks Community, this home offers easy access to the golf course and scenic walking paths. The charming covered porch leads to an open floor plan filled with natural light and low-maintenance laminate flooring. The living room features a modern gas fireplace, while the kitchen boasts quartz counters, stainless steel appliances, and a functional layout perfect for entertaining. The unique design includes two bedrooms and a full bath for privacy, with the primary suite offering stunning mountain views and a luxurious 5-piece bath. The finished basement provides versatile space for recreation or work. With an attached 2-car garage and proximity to shopping, dining, and parks, this home is a must-see! Priced to sell!



Terri Ellerington

303-929-8116

terri@elevated-team.com

<https://www.remax.com/real-estate-agents/terri-ellerington-louisville-co/10205130>

Scan code
for more
property
details



2408 Concord Circle, Lafayette, CO 80026 — All Levels



TOTAL: 1661 sq. ft
 BELOW GRADE: 356 sq. ft, BELOW GRADE: 56 sq. ft, FLOOR 3: 484 sq. ft, FLOOR 4: 413 sq. ft, FLOOR 5: 352 sq. ft
 EXCLUDED AREAS: ELECTRICAL ROOM: 92 sq. ft, GARAGE: 367 sq. ft, PORCH: 49 sq. ft,
 WALLS: 180 sq. ft

Floor Plan Created By V1photos.com. Measurements Deamed Highly Reliable But Not Guaranteed.



Disclaimer: Sizes and Dimensions are Approximate, Actual May Vary.



Terri Ellerington

303-929-8116

terri@elevated-team.com

<https://www.remax.com/real-estate-agents/terri-ellerington-louisville-co/102051301>



Scan code
for more
property
details

