



8580 N County Line Road
Longmont, CO 80503
COMMUNITY: Northern Plains

MLS # IR1047574
PRICE \$1,592,500



Single Family



4133 SQFT



2 Beds



2/1 Baths



2 Car



35.23 Acre

PROPERTY DETAILS

Stunning 35-acre property located between Longmont and Berthoud with lake frontage and 360° mountain views. This 2-bedroom, 3-bath home features 2,517 sq. ft. plus a 1,080 sq. ft. basement with a full mother-in-law suite and kitchen. The main level boasts a gourmet kitchen with granite countertops and double ovens. Enjoy outdoor living with two upper porches, two patios, and a walk-out basement patio. The primary suite includes heated floors and expansive views. Valuable water rights are included, offering a rare chance for privacy, acreage, and beautiful Colorado scenery.



Arnold Turner
303-775-0052
arnold@turnerlongmont.com



Patricia Turner
303-362-3821
patricia@turnerlongmont.com



Scan code
for more
property
details





TOTAL: 3276 sq. ft
BELOW GRADE: 743 sq. ft, 1st floor: 2029 sq. ft, 3RD FLOOR: 504 sq. ft
EXCLUDED AREAS: UTILITY: 209 sq. ft, PATIO: 333 sq. ft, STORAGE: 79 sq. ft,
SHED: 91 sq. ft, GARAGE: 490 sq. ft, DECK: 664 sq. ft,
PORCH: 146 sq. ft, BALCONY: 1067 sq. ft, WALLS: 249 sq. ft

Floor Plan Created By V1photos.com. Measurements Deamed Highly Reliable But Not Guaranteed.



Disclaimer: Sizes and Dimensions are Approximate, Actual May Vary.



Arnold Turner
303-775-0052
arnold@turnerlongmont.com

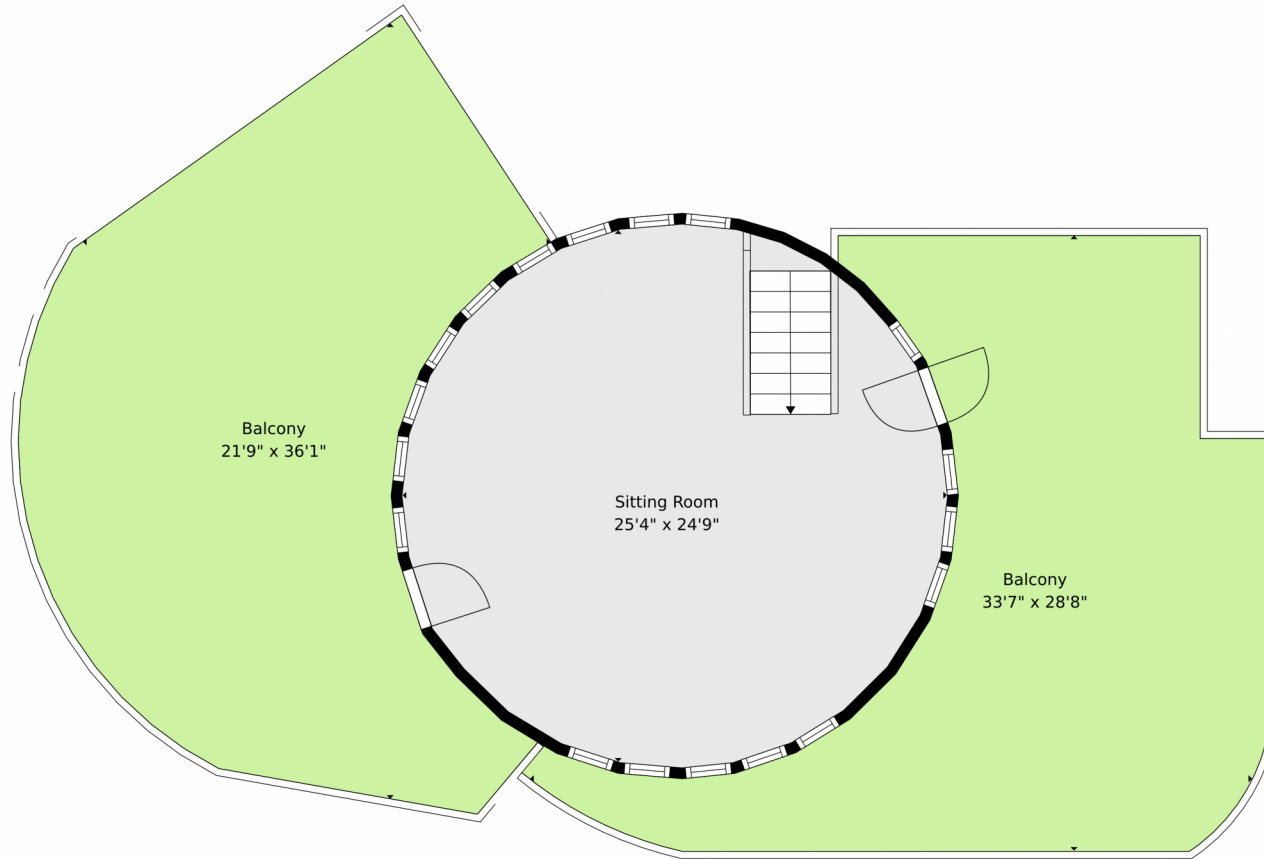


Patricia Turner
303-362-3821
patricia@turnerlongmont.com



Scan code
for more
property
details





TOTAL: 3276 sq. ft
BELOW GRADE: 743 sq. ft, 1st floor: 2029 sq. ft, 3RD FLOOR: 504 sq. ft
EXCLUDED AREAS: UTILITY: 209 sq. ft, PATIO: 333 sq. ft, STORAGE: 79 sq. ft,
SHED: 91 sq. ft, GARAGE: 490 sq. ft, DECK: 664 sq. ft,
PORCH: 146 sq. ft, BALCONY: 1067 sq. ft, WALLS: 249 sq. ft

Floor Plan Created By V1photos.com. Measurements Deamed Highly Reliable But Not Guaranteed.



Disclaimer: Sizes and Dimensions are Approximate, Actual May Vary.



Arnold Turner
303-775-0052
arnold@turnerlongmont.com



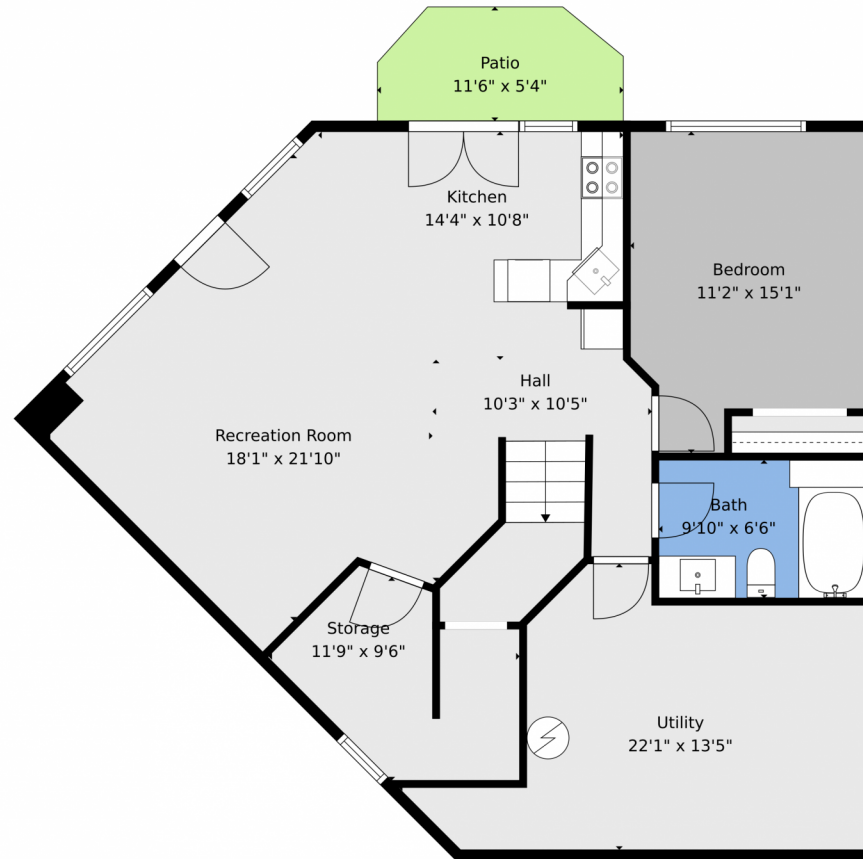
Patricia Turner
303-362-3821
patricia@turnerlongmont.com



Scan code
for more
property
details



8580 N County Line Road, Longmont, CO 80503 — Basement



TOTAL: 3276 sq. ft
BELOW GRADE: 743 sq. ft, 1st floor: 2029 sq. ft, 3RD FLOOR: 504 sq. ft
EXCLUDED AREAS: UTILITY: 209 sq. ft, PATIO: 333 sq. ft, STORAGE: 79 sq. ft,
SHED: 91 sq. ft, GARAGE: 490 sq. ft, DECK: 664 sq. ft,
PORCH: 146 sq. ft, BALCONY: 1067 sq. ft, WALLS: 249 sq. ft

Floor Plan Created By V1photos.com. Measurements Deamed Highly Reliable But Not Guaranteed.



Disclaimer: Sizes and Dimensions are Approximate, Actual May Vary.



Arnold Turner
303-775-0052
arnold@turnerlongmont.com



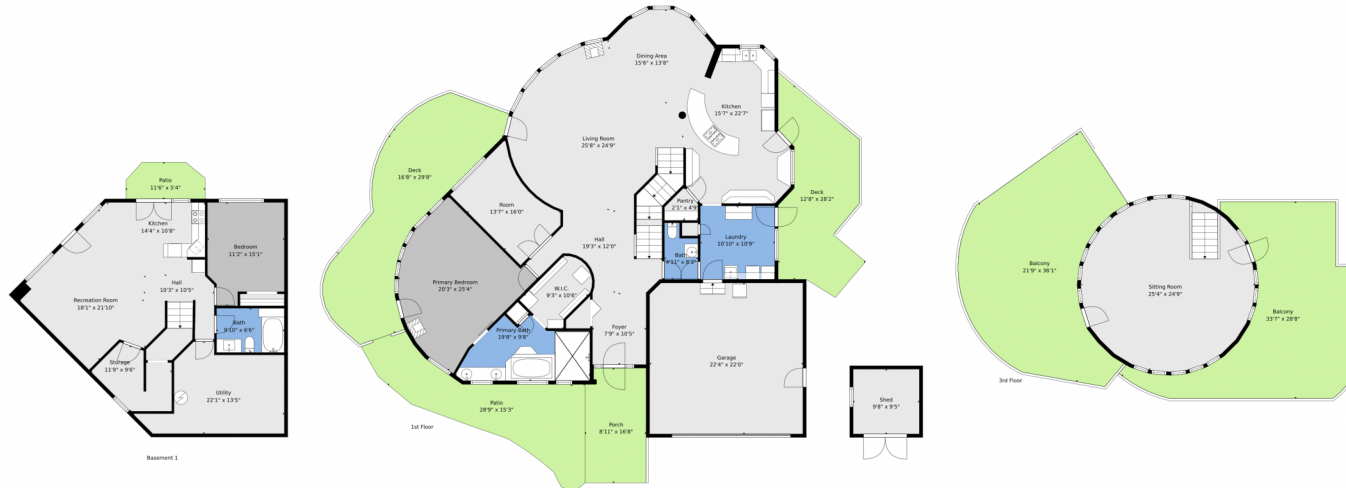
Patricia Turner
303-362-3821
patricia@turnerlongmont.com



Scan code
for more
property
details



8580 N County Line Road, Longmont, CO 80503 – All Levels



TOTAL: 3276 sq. ft
BELOW GRADE: 743 sq. ft, 1st floor: 2029 sq. ft, 3RD FLOOR: 504 sq. ft
EXCLUDED AREAS: UTILITY: 209 sq. ft, PATIO: 333 sq. ft, STORAGE: 79 sq. ft,
SHED: 91 sq. ft, GARAGE: 490 sq. ft, DECK: 664 sq. ft,
PORCH: 146 sq. ft, BALCONY: 1067 sq. ft, WALLS: 249 sq. ft

Floor Plan Created By V1photos.com. Measurements Deamed Highly Reliable But Not Guaranteed.



Disclaimer: Sizes and Dimensions are Approximate, Actual May Vary.



Arnold Turner
303-775-0052
arnold@turnerlongmont.com



Patricia Turner
303-362-3821
patricia@turnerlongmont.com



Scan code
for more
property
details

