



4640 West 39th Avenue  
Denver, CO 80212  
**COMMUNITY:** Berkeley

MLS # 4435712  
**PRICE** \$1



Single Family



2478 SQFT



4 Beds



4 Baths



2 Car



0.06 Acre

## PROPERTY DETAILS

Discover modern luxury in this brand-new contemporary home, just steps from Tennyson Street's restaurants and shops. This 4-bedroom, 4-bath residence combines sophisticated design with comfort, featuring designer cabinetry and high-end finishes. The chef's kitchen boasts Calacatta quartz countertops, a Dacor 6-burner range, and Samsung stainless steel appliances. The bright main living area centers around a Heat & Glo fireplace. Upstairs, the primary suite offers mountain views and a spa-like bath with a walk-in shower and soaking tub. The finished basement includes a great room, full bath, and an extra bedroom. Enjoy a two-car garage, additional parking, and a low-maintenance yard perfect for pets. Experience elevated living in Denver's vibrant neighborhood.

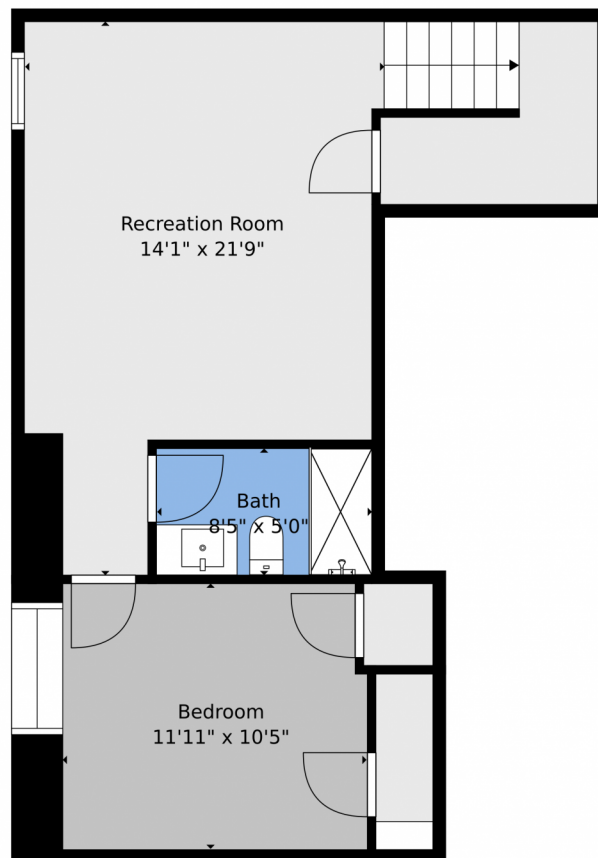


**Julie Leins**  
720-474-0928  
julieleins@kw.com  
<https://theleinsgroup.com>



Scan code  
for more  
property  
details





**TOTAL: 2144 sq. ft**  
BELOW GRADE: 499 sq. ft, 1st floor: 555 sq. ft, 2nd floor: 1090 sq. ft  
EXCLUDED AREAS: UNDEFINED: 24 sq. ft, GARAGE: 497 sq. ft, PORCH: 230 sq. ft,  
PATIO: 96 sq. ft, WALLS: 253 sq. ft

Floor Plan Created By V1photos.com. Measurements Deamed Highly Reliable But Not Guaranteed.



Disclaimer: Sizes and Dimensions are Approximate, Actual May Vary.

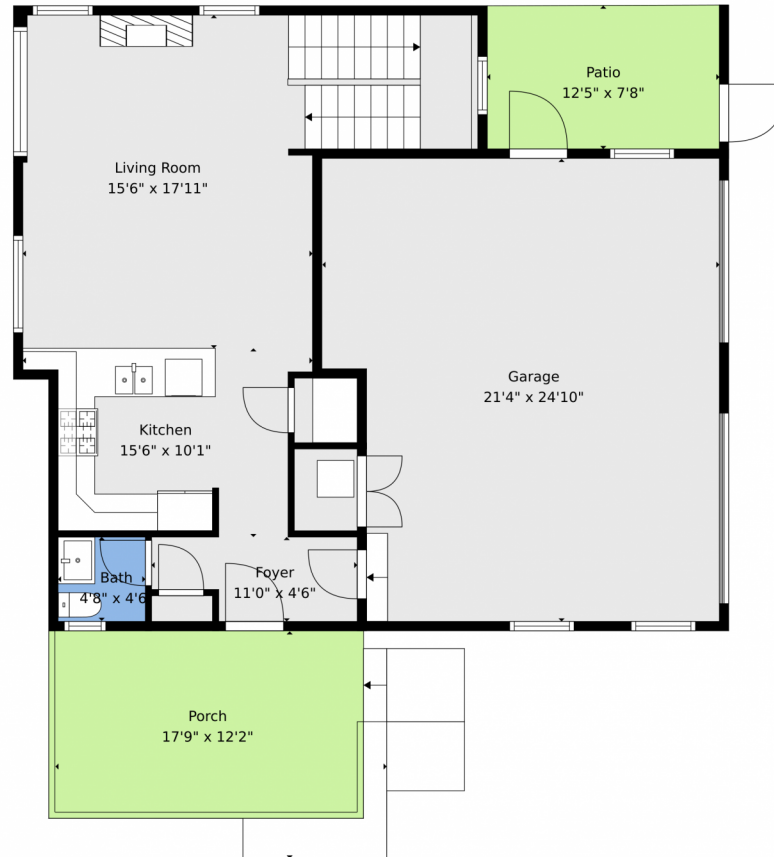


**Julie Leins**  
720-474-0928  
julieleins@kw.com  
<https://theleinsgroup.com>



Scan code  
for more  
property  
details





**TOTAL: 2144 sq. ft**  
BELOW GRADE: 499 sq. ft, 1st floor: 555 sq. ft, 2nd floor: 1090 sq. ft  
EXCLUDED AREAS: UNDEFINED: 24 sq. ft, GARAGE: 497 sq. ft, PORCH: 230 sq. ft,  
PATIO: 96 sq. ft, WALLS: 253 sq. ft

Floor Plan Created By V1photos.com. Measurements Deamed Highly Reliable But Not Guaranteed.



Disclaimer: Sizes and Dimensions are Approximate, Actual May Vary.



**Julie Leins**  
720-474-0928  
julieleins@kw.com  
<https://theleinsgroup.com>



Scan code  
for more  
property  
details







**TOTAL: 2144 sq. ft**  
BELOW GRADE: 499 sq. ft, 1st floor: 555 sq. ft, 2nd floor: 1090 sq. ft  
EXCLUDED AREAS: UNDEFINED: 24 sq. ft, GARAGE: 497 sq. ft, PORCH: 230 sq. ft,  
PATIO: 96 sq. ft, WALLS: 253 sq. ft

Floor Plan Created By V1photos.com, Measurements Deamed Highly Reliable But Not Guaranteed.



Disclaimer: Sizes and Dimensions are Approximate, Actual May Vary.



**Julie Leins**  
720-474-0928  
julieleins@kw.com  
<https://theleinsgroup.com>



Scan code  
for more  
property  
details



# 4640 West 39th Avenue, Denver, CO 80212 — floorplan\_all\_0



**TOTAL: 2144 sq. ft**  
BELOW GRADE: 499 sq. ft, 1st floor: 555 sq. ft, 2nd floor: 1090 sq. ft  
EXCLUDED AREAS: UNDEFINED: 24 sq. ft, GARAGE: 497 sq. ft, PORCH: 230 sq. ft,  
PATIO: 96 sq. ft, WALLS: 253 sq. ft

Floor Plan Created By V1photos.com. Measurements Deamed Highly Reliable But Not Guaranteed.



Disclaimer: Sizes and Dimensions are Approximate, Actual May Vary.



**Julie Leins**  
720-474-0928  
julieleins@kw.com  
<https://theleinsgroup.com>



Scan code  
for more  
property  
details

