

22573 Esplanada Drive


Boca Raton, FL 33433

COMMUNITY: Boca Pointe

PRICE \$1



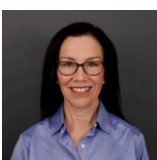
 Single Family

 2783 SQFT

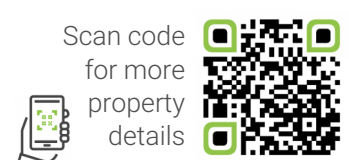
 4 Beds

 3 Baths

 2 Car



Liza Marie Lantz  
561-376-0747  
lizalantz@gmail.com



## 22573 Esplanada Drive, Boca Raton, FL 33433 — Lower Level

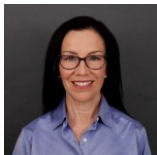


**TOTAL: 2813 sq. ft**  
1st floor: 2139 sq. ft, 2nd floor: 674 sq. ft  
EXCLUDED AREAS: GARAGE: 346 sq. ft, PORCH: 439 sq. ft, SCREENED PORCH: 801 sq. ft,  
OPEN TO BELOW: 355 sq. ft, WALLS: 286 sq. ft

Floor Plan Created By V1photos.com, Measurements Deamed Highly Reliable But Not Guaranteed.



Disclaimer: Sizes and Dimensions are Approximate, Actual May Vary.



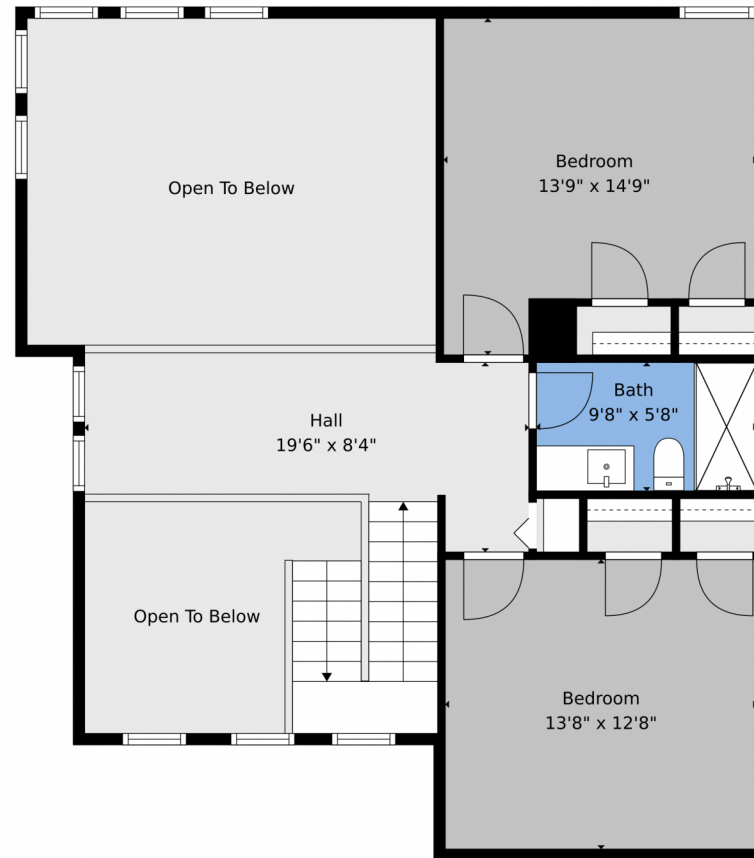
**Liza Marie Lantz**  
561-376-0747  
lizalantz@gmail.com



Scan code  
for more  
property  
details



## 22573 Esplanada Drive, Boca Raton, FL 33433 — 2nd Level

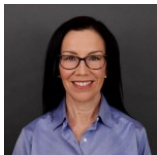


**TOTAL: 2813 sq. ft**  
1st floor: 2139 sq. ft, 2nd floor: 674 sq. ft  
EXCLUDED AREAS: GARAGE: 346 sq. ft, PORCH: 439 sq. ft, SCREENED PORCH: 801 sq. ft,  
OPEN TO BELOW: 355 sq. ft, WALLS: 286 sq. ft

Floor Plan Created By V1photos.com, Measurements Deamed Highly Reliable But Not Guaranteed.



Disclaimer: Sizes and Dimensions are Approximate, Actual May Vary.



**Liza Marie Lantz**  
561-376-0747  
lizalantz@gmail.com



Scan code  
for more  
property  
details





# 22573 Esplanada Drive, Boca Raton, FL 33433 — All Levels

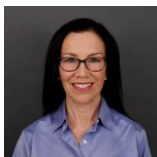


**TOTAL: 2813 sq. ft**  
1st floor: 2139 sq. ft, 2nd floor: 674 sq. ft  
EXCLUDED AREAS: GARAGE: 346 sq. ft, PORCH: 439 sq. ft, SCREENED PORCH: 801 sq. ft,  
OPEN TO BELOW: 355 sq. ft, WALLS: 286 sq. ft

Floor Plan Created By V1photos.com, Measurements Deamed Highly Reliable But Not Guaranteed.



Disclaimer: Sizes and Dimensions are Approximate, Actual May Vary.



Liza Marie Lantz  
561-376-0747  
lizalantz@gmail.com

