



7704 South Pontiac Court
Centennial, CO 80112
COMMUNITY: Foxridge

MLS # 2517102
PRICE \$900,000

Gormet Chef's Kitchen With Open Floor Plan make entertaining so fun!



Single Family 2035 SQFT 4 Beds 3 Baths 2 Car

PROPERTY DETAILS

This home offers an entire floor for the fully remodeled kitchen with its giant island and built in TV, dining room with bay windows and gorgeous faux fireplace. You will love the Thermador appliances, including a built in capacino/espresso machine, 2 Microwaves, 2 Ovens, a Silent Dishwasher, a Six-Burner Gas Stove-top with a built-in Griddle and Exhaust Hood. There's a HUGE built-in pantry, farm style sink, shiplap ceiling and gorgeous lighting w/dimmers. The hickory flooring throughout is simply beautiful. Entertain guests on the back Patio and large yard. Enjoy a 2-car garage that comes with a heater to keep you nice and warm. Located on a cul-de-sac adjacent to Walking Paths and Open Space, this home is within the sought after Cherry Creek School District. Must See!! Don't miss out!



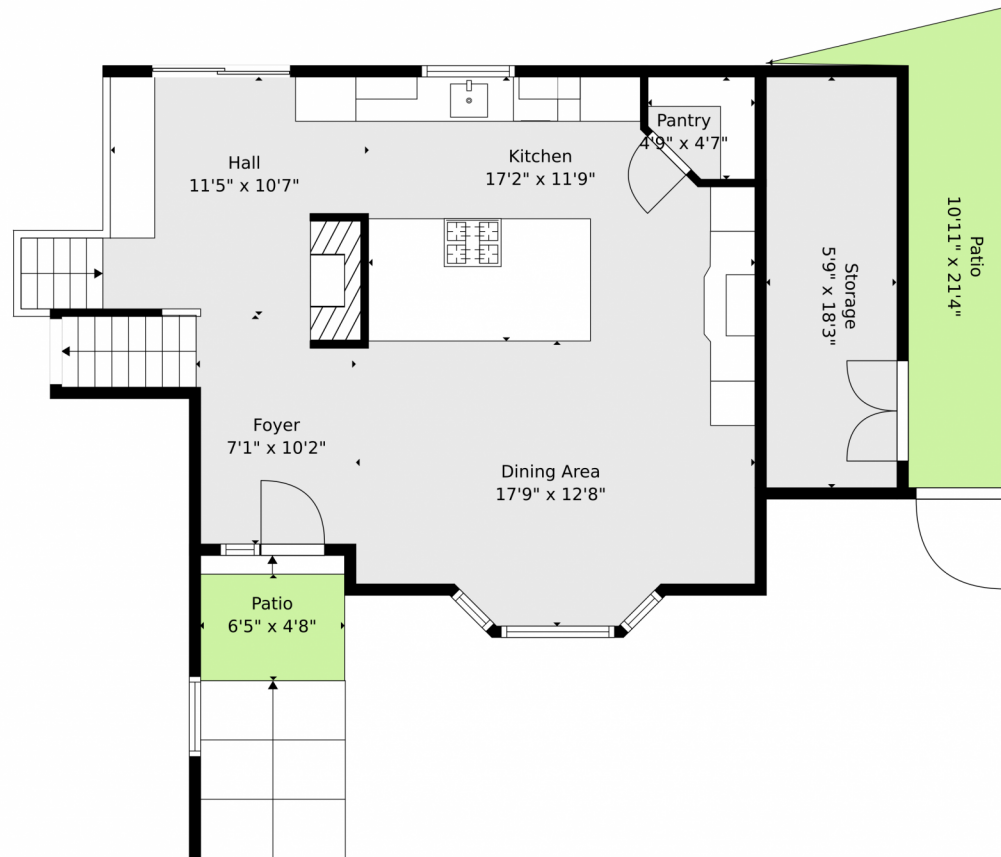
Robin T Elliott
303-995-0900
robin-elliott@comcast.net



Scan code
for more
property
details



7704 South Pontiac Court, Centennial, CO 80112 — Main Level



TOTAL: 1932 sq. ft

BELOW GRADE: 0 sq. ft, 1st floor: 574 sq. ft, 2nd floor: 639 sq. ft, 3rd floor: 719 sq. ft
EXCLUDED AREAS: BASEMENT: 590 sq. ft, GARAGE: 388 sq. ft, SHED: 16 sq. ft,
PATIO: 523 sq. ft, STORAGE: 106 sq. ft, WALLS: 248 sq. ft

Floor Plan Created By V1photos.com. Measurements Deamed Highly Reliable But Not Guaranteed.



Disclaimer: Sizes and Dimensions are Approximate, Actual May Vary.



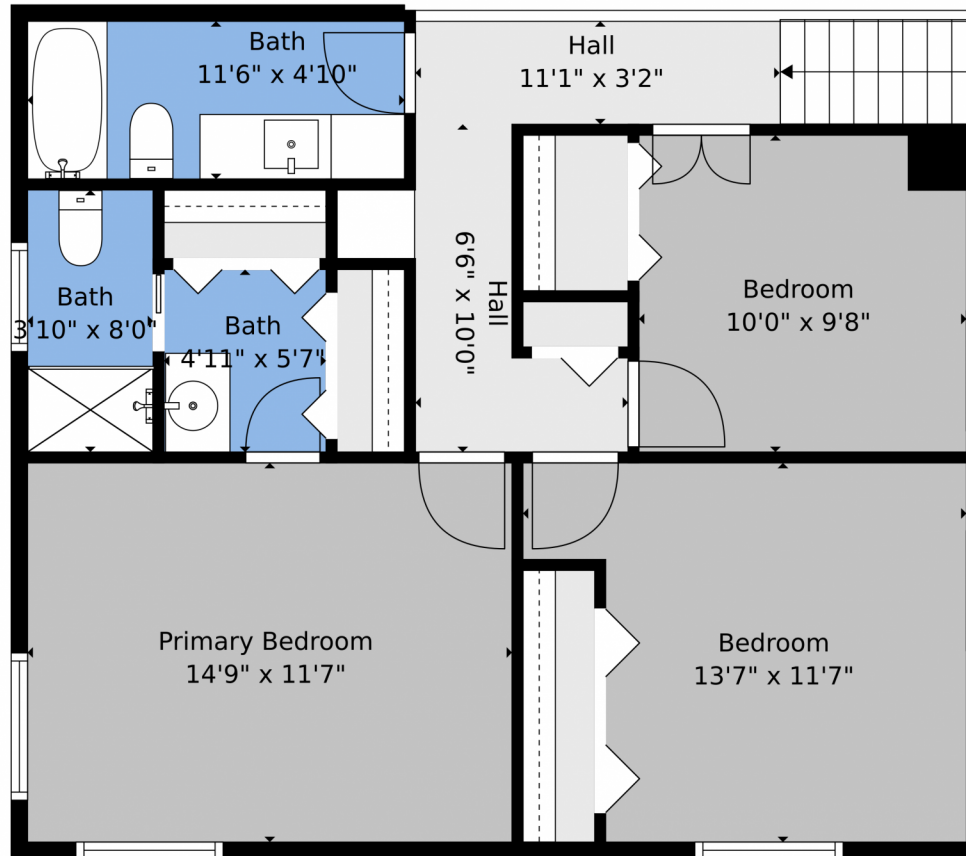
Robin T Elliott
303-995-0900
robin-elliott@comcast.net



Scan code
for more
property
details



7704 South Pontiac Court, Centennial, CO 80112 — 2nd Level



TOTAL: 1932 sq. ft

BELOW GRADE: 0 sq. ft, 1st floor: 574 sq. ft, 2nd floor: 639 sq. ft, 3rd floor: 719 sq. ft
EXCLUDED AREAS: BASEMENT: 590 sq. ft, GARAGE: 388 sq. ft, SHED: 16 sq. ft,
PATIO: 523 sq. ft, STORAGE: 106 sq. ft, WALLS: 248 sq. ft

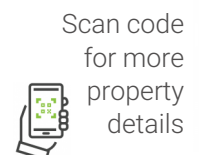
Floor Plan Created By V1photos.com. Measurements Deamed Highly Reliable But Not Guaranteed.



Disclaimer: Sizes and Dimensions are Approximate, Actual May Vary.



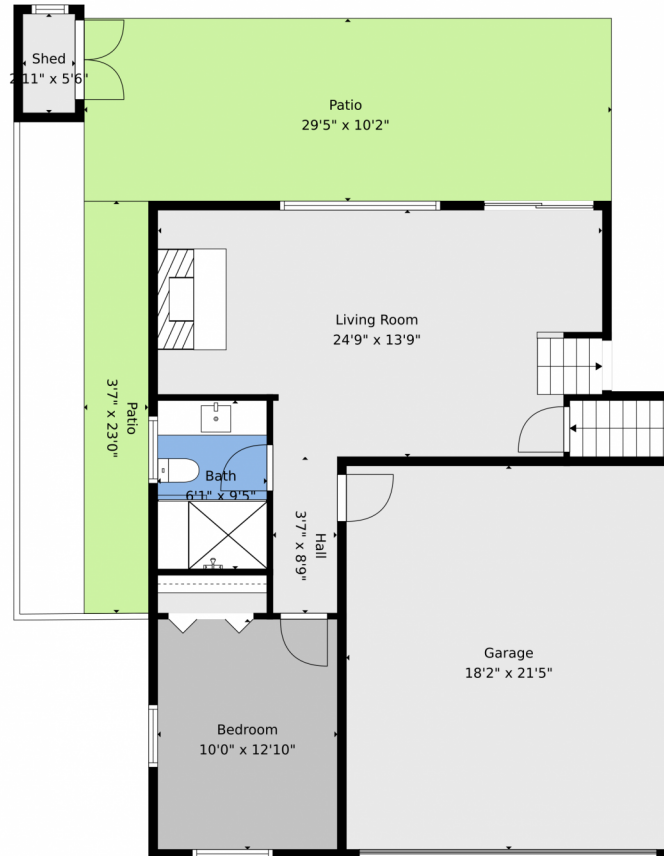
Robin T Elliott
303-995-0900
robin-elliott@comcast.net



Scan code
for more
property
details



7704 South Pontiac Court, Centennial, CO 80112 — Lower Level



TOTAL: 1932 sq. ft

BELOW GRADE: 0 sq. ft, 1st floor: 574 sq. ft, 2nd floor: 639 sq. ft, 3rd floor: 719 sq. ft
EXCLUDED AREAS: BASEMENT: 590 sq. ft, GARAGE: 388 sq. ft, SHED: 16 sq. ft,
PATIO: 523 sq. ft, STORAGE: 106 sq. ft, WALLS: 248 sq. ft

Floor Plan Created By V1photos.com. Measurements Deamed Highly Reliable But Not Guaranteed.



Disclaimer: Sizes and Dimensions are Approximate, Actual May Vary.



Robin T Elliott
303-995-0900
robin-elliott@comcast.net

