



14890 Mariposa Court
Broomfield, CO 80023
COMMUNITY: Saddlewood



Single Family



2572 SQFT



4 Beds



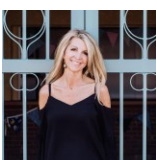
2/1 Baths



3 Car



2.41 Acre



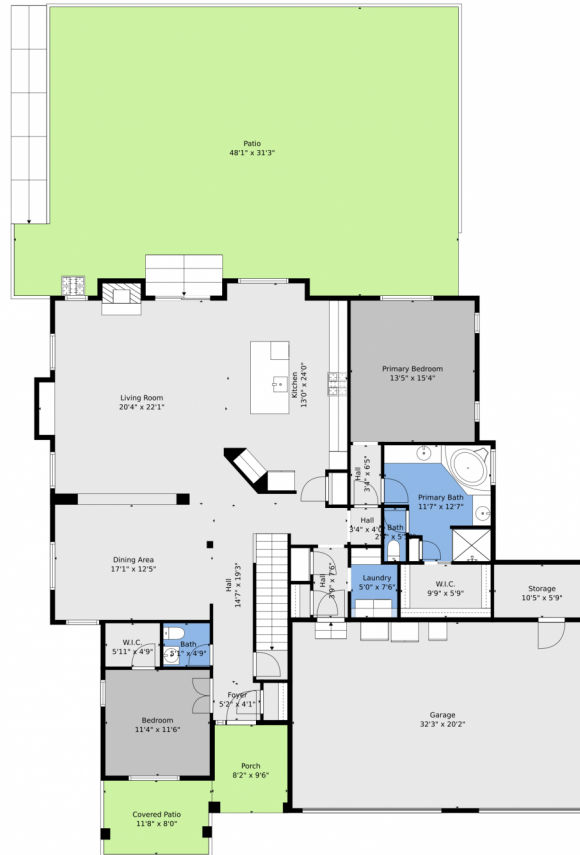
Christy Hepp
303-910-5393
cnishi1068@msn.com
<https://christysellscolorado.com>



Scan code
for more
property
details



14890 Mariposa Court, Broomfield, CO 80023 — Main



TOTAL: 2543 sq. ft
BELOW GRADE: 0 sq. ft, 1st floor: 1910 sq. ft, 2nd floor: 633 sq. ft
EXCLUDED AREAS: BASEMENT: 1543 sq. ft, GARAGE: 649 sq. ft, STORAGE: 60 sq. ft,
COVERED PATIO: 92 sq. ft, PATIO: 1385 sq. ft, PORCH: 76 sq. ft,
FIREPLACE: 10 sq. ft, WALLS: 280 sq. ft

Floor Plan Created By V1photos.com, Measurements Deamed Highly Reliable But Not Guaranteed.



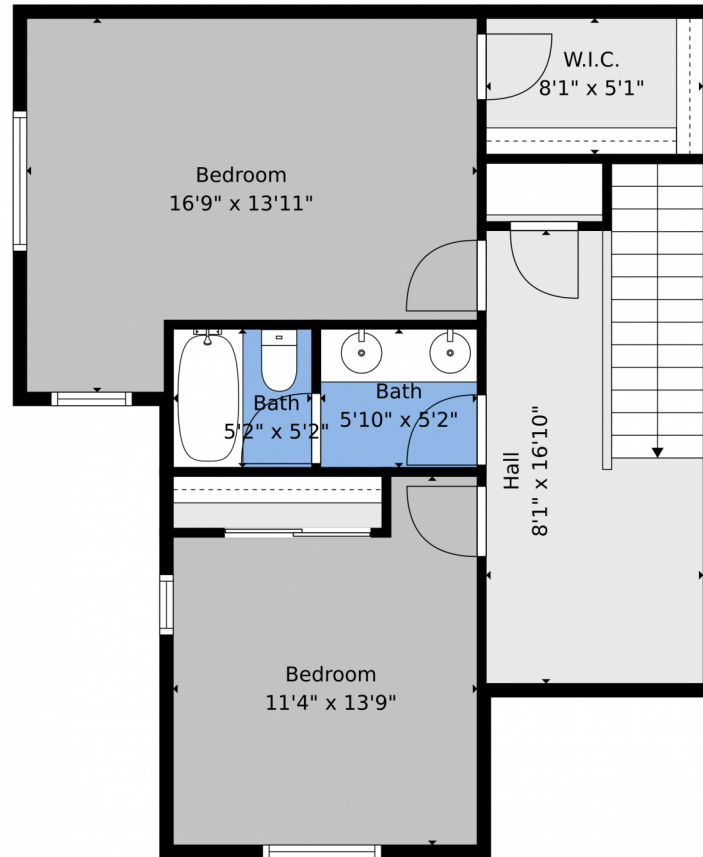
Disclaimer: Sizes and Dimensions are Approximate, Actual May Vary.



Christy Hepp
303-910-5393
cnishi1068@msn.com
<https://christysellscolorado.com>



14890 Mariposa Court, Broomfield, CO 80023 — 2nd Level



TOTAL: 2543 sq. ft
BELOW GRADE: 0 sq. ft, 1st floor: 1910 sq. ft, 2nd floor: 633 sq. ft
EXCLUDED AREAS: BASEMENT: 1543 sq. ft, GARAGE: 649 sq. ft, STORAGE: 60 sq. ft,
COVERED PATIO: 92 sq. ft, PATIO: 1385 sq. ft, PORCH: 76 sq. ft,
FIREPLACE: 10 sq. ft, WALLS: 280 sq. ft

Floor Plan Created By V1photos.com, Measurements Deamed Highly Reliable But Not Guaranteed.



Disclaimer: Sizes and Dimensions are Approximate, Actual May Vary.



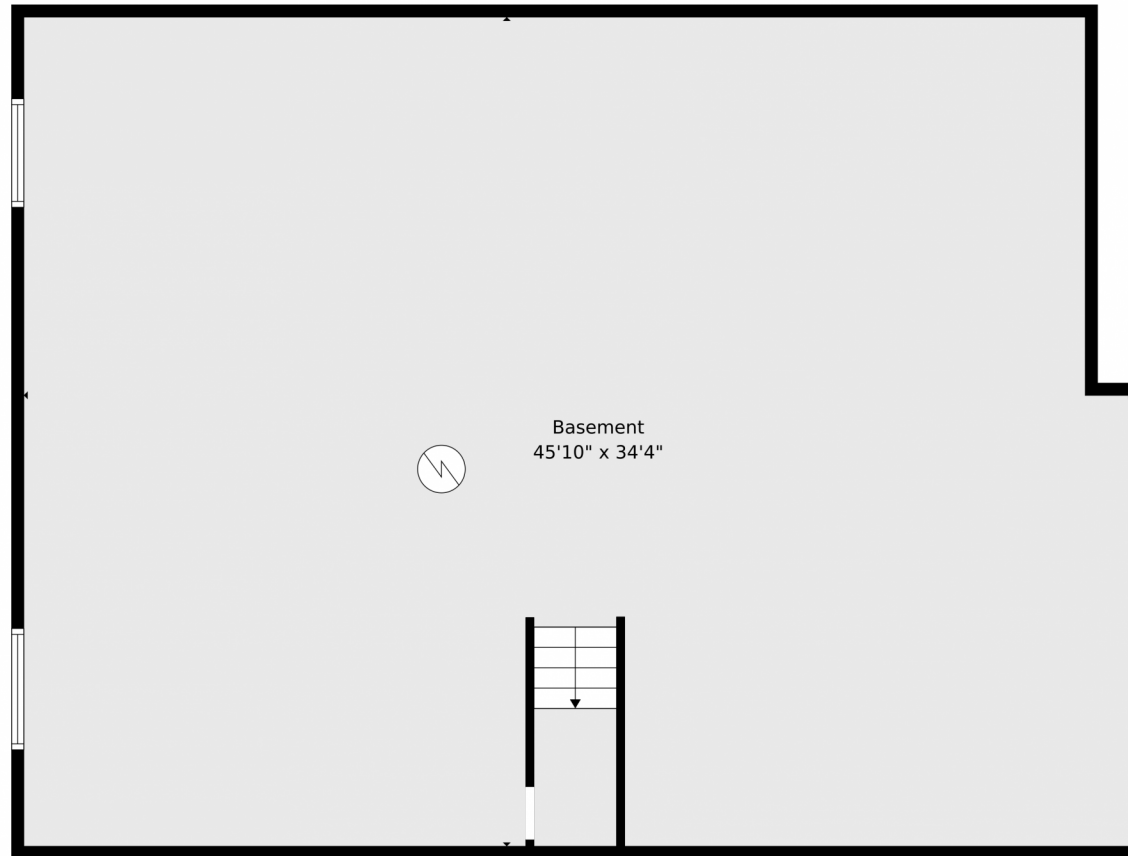
Christy Hepp
303-910-5393
cnishi1068@msn.com
<https://christysellscolorado.com>



Scan code
for more
property
details



14890 Mariposa Court, Broomfield, CO 80023 — Basement



TOTAL: 2543 sq. ft
BELOW GRADE: 0 sq. ft, 1st floor: 1910 sq. ft, 2nd floor: 633 sq. ft
EXCLUDED AREAS: BASEMENT: 1543 sq. ft, GARAGE: 649 sq. ft, STORAGE: 60 sq. ft,
COVERED PATIO: 92 sq. ft, PATIO: 1385 sq. ft, PORCH: 76 sq. ft,
FIREPLACE: 10 sq. ft, WALLS: 280 sq. ft

Floor Plan Created By V1photos.com. Measurements Deamed Highly Reliable But Not Guaranteed.

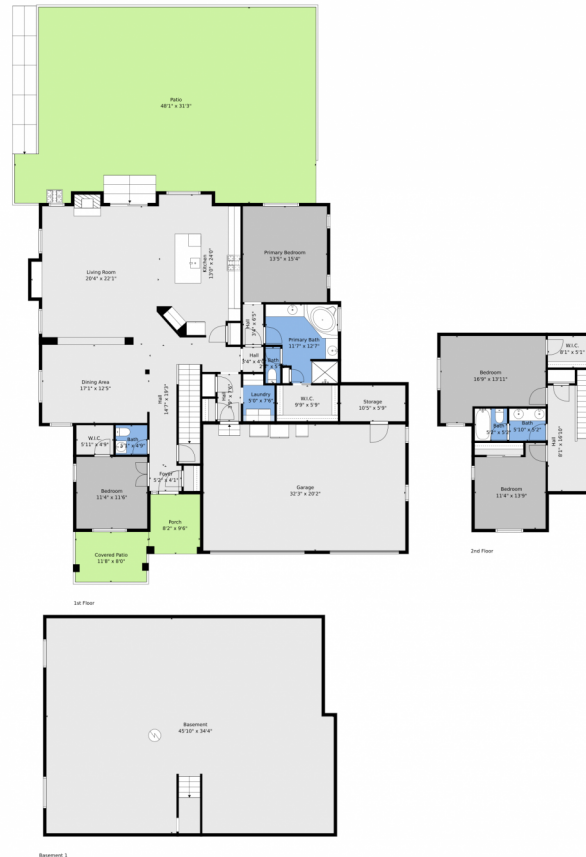
Disclaimer: Sizes and Dimensions are Approximate, Actual May Vary.



Christy Hepp
303-910-5393
cnishi1068@msn.com
<https://christysellscolorado.com>



14890 Mariposa Court, Broomfield, CO 80023 — All Levels



TOTAL: 2543 sq. ft
BELOW GRADE: 0 sq. ft, 1st floor: 1910 sq. ft, 2nd floor: 633 sq. ft
EXCLUDED AREAS: BASEMENT: 1543 sq. ft, GARAGE: 649 sq. ft, STORAGE: 60 sq. ft,
COVERED PATIO: 92 sq. ft, PATIO: 1385 sq. ft, PORCH: 76 sq. ft,
FIREPLACE: 10 sq. ft, WALLS: 280 sq. ft

Floor Plan Created By V1photos.com. Measurements Deamed Highly Reliable But Not Guaranteed.



Disclaimer: Sizes and Dimensions are Approximate, Actual May Vary.



Christy Hepp
303-910-5393
cnishi1068@msn.com
<https://christysellscolorado.com>

