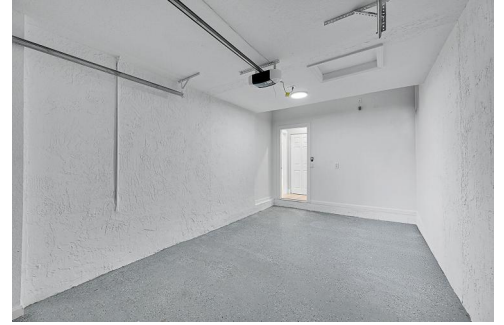





884 Northwest 170th Terrace
Pembroke Pines, FL 33028
COMMUNITY: PEMBROKE ISLE


MLS
A11939588
PRICE \$545,000



 Townhouse

 1442 SQFT

 3 Beds

 2/1 Baths

 1 Car

Paola Huertas
678-876-8594
pada06@gmail.com



884 Northwest 170th Terrace, Pembroke Pines, FL 33028 — Main



TOTAL: 1531 sq. ft
1st floor: 835 sq. ft, 2nd floor: 696 sq. ft
EXCLUDED AREAS: PATIO: 150 sq. ft, COURTYARD: 117 sq. ft, BALCONY: 34 sq. ft,
WALLS: 100 sq. ft

Floor Plan Created By V1photos.com, Measurements Deamed Highly Reliable But Not Guaranteed.

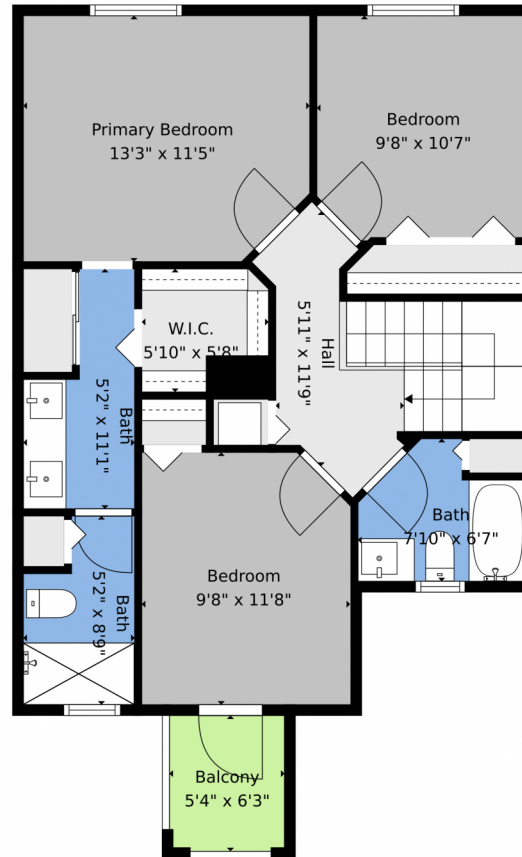


Disclaimer: Sizes and Dimensions are Approximate, Actual May Vary.

Paola Huertas
678-876-8594
pada06@gmail.com



884 Northwest 170th Terrace, Pembroke Pines, FL 33028 – 2nd Level



TOTAL: 1531 sq. ft
1st floor: 835 sq. ft, 2nd floor: 696 sq. ft
EXCLUDED AREAS: PATIO: 150 sq. ft, COURTYARD: 117 sq. ft, BALCONY: 34 sq. ft,
WALLS: 100 sq. ft

Floor Plan Created By V1photos.com, Measurements Deamed Highly Reliable But Not Guaranteed.



Disclaimer: Sizes and Dimensions are Approximate, Actual May Vary.

Paola Huertas
678-876-8594
pada06@gmail.com



884 Northwest 170th Terrace, Pembroke Pines, FL 33028 – All Levels



TOTAL: 1531 sq. ft
1st floor: 835 sq. ft, 2nd floor: 696 sq. ft
EXCLUDED AREAS: PATIO: 150 sq. ft, COURTYARD: 117 sq. ft, BALCONY: 34 sq. ft,
WALLS: 100 sq. ft

Floor Plan Created By V1photos.com. Measurements Deamed Highly Reliable But Not Guaranteed.



Disclaimer: Sizes and Dimensions are Approximate, Actual May Vary.

Paola Huertas
678-876-8594
pada06@gmail.com

