



6840 West 60th Avenue  
Arvada, CO 80003  
COMMUNITY: Woodfork



Single Family



3264 SQFT



4 Beds



3/1 Baths



2 Car



0.13 Acre



Marla Cody  
303-241-1718  
cody6895@hotmail.com



Scan code  
for more  
property  
details





**TOTAL: 2861 sq. ft**

BELOW GRADE: 636 sq. ft, 1st floor: 1010 sq. ft, 2nd floor: 1215 sq. ft  
EXCLUDED AREAS: UTILITY: 62 sq. ft, COVERED PATIO: 419 sq. ft, PATIO: 230 sq. ft,  
GARAGE: 445 sq. ft, PORCH: 148 sq. ft, DECK: 161 sq. ft,  
FIREPLACE: 6 sq. ft, OPEN TO BELOW: 56 sq. ft, WALLS: 242 sq. ft

Floor Plan Created By V1photos.com. Measurements Deamed Highly Reliable But Not Guaranteed.



Disclaimer: Sizes and Dimensions are Approximate, Actual May Vary.



**Marla Cody**  
303-241-1718  
cody6895@hotmail.com



Scan code  
for more  
property  
details



## 6840 West 60th Avenue, Arvada, CO 80003 — 2nd Level



**TOTAL: 2861 sq. ft**

BELOW GRADE: 636 sq. ft, 1st floor: 1010 sq. ft, 2nd floor: 1215 sq. ft  
EXCLUDED AREAS: UTILITY: 62 sq. ft, COVERED PATIO: 419 sq. ft, PATIO: 230 sq. ft,  
GARAGE: 445 sq. ft, PORCH: 148 sq. ft, DECK: 161 sq. ft,  
FIREPLACE: 6 sq. ft, OPEN TO BELOW: 56 sq. ft, WALLS: 242 sq. ft

Floor Plan Created By V1photos.com. Measurements Deamed Highly Reliable But Not Guaranteed.



Disclaimer: Sizes and Dimensions are Approximate, Actual May Vary.



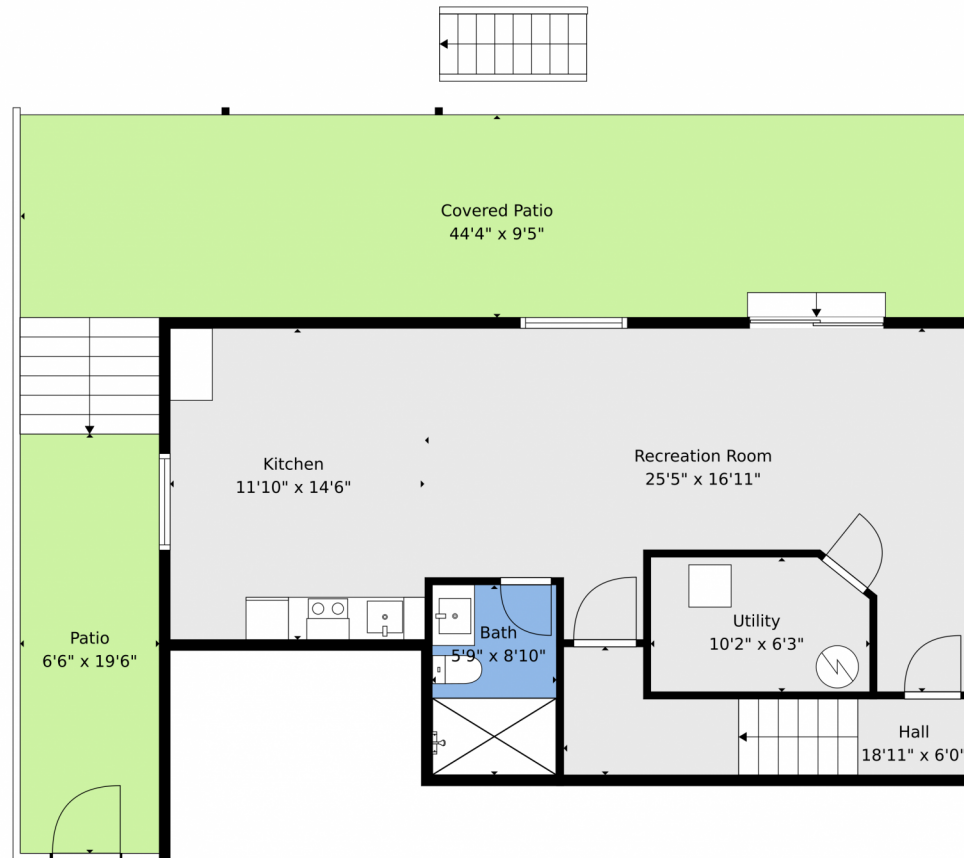
**Marla Cody**  
303-241-1718  
cody6895@hotmail.com



Scan code  
for more  
property  
details



## 6840 West 60th Avenue, Arvada, CO 80003 — Basement



**TOTAL: 2861 sq. ft**

BELOW GRADE: 636 sq. ft, 1st floor: 1010 sq. ft, 2nd floor: 1215 sq. ft  
EXCLUDED AREAS: UTILITY: 62 sq. ft, COVERED PATIO: 419 sq. ft, PATIO: 230 sq. ft,  
GARAGE: 445 sq. ft, PORCH: 148 sq. ft, DECK: 161 sq. ft,  
FIREPLACE: 6 sq. ft, OPEN TO BELOW: 56 sq. ft, WALLS: 242 sq. ft

Floor Plan Created By V1photos.com, Measurements Deamed Highly Reliable But Not Guaranteed.

Disclaimer: Sizes and Dimensions are Approximate, Actual May Vary.



**Marla Cody**  
303-241-1718  
cody6895@hotmail.com



Scan code  
for more  
property  
details





# 6840 West 60th Avenue, Arvada, CO 80003 — All Levels



**TOTAL: 2861 sq. ft**  
 BELOW GRADE: 636 sq. ft, 1st floor: 1010 sq. ft, 2nd floor: 1215 sq. ft  
 EXCLUDED AREAS: UTILITY: 62 sq. ft, COVERED PATIO: 419 sq. ft, PATIO: 230 sq. ft,  
 GARAGE: 445 sq. ft, PORCH: 148 sq. ft, DECK: 161 sq. ft,  
 FIREPLACE: 6 sq. ft, OPEN TO BELOW: 56 sq. ft, WALLS: 242 sq. ft

Floor Plan Created By V1photos.com, Measurements Deamed Highly Reliable But Not Guaranteed.



Disclaimer: Sizes and Dimensions are Approximate, Actual May Vary.



**Marla Cody**  
 303-241-1718  
 cody6895@hotmail.com



Scan code  
 for more  
 property  
 details

