

Completely Remodeled Kings Valley Duplex with Mountain Views



 Single Family
  1620 SQFT
  3 Beds
  2 Baths
  0.23 Acre

PROPERTY DETAILS

Welcome to this remodeled ½ duplex in the desirable Kings Valley neighborhood of Conifer. Set on a private ¼-acre lot, it boasts mountain and Pikes Peak views. The upper-level features a modern kitchen with maple cabinetry, new appliances, and a water filtration system. The living room has vaulted ceilings, a fireplace, and access to a deck. Two bedrooms and a remodeled bathroom complete this level, with new windows installed in 2025. The lower level offers a family room with a pellet stove and a private primary suite with an en-suite bathroom. Recent upgrades include efficient heating and cooling, new doors, roof, and gutters. A new driveway, retaining wall, and shed enhance the property. This updated retreat is move-in ready and a rare find.



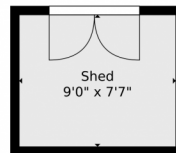
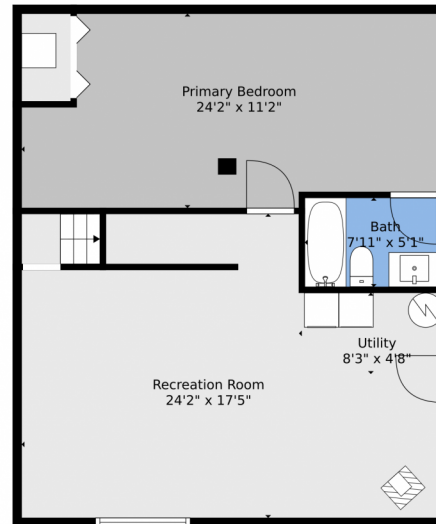
Tammy Drozda
 720-308-1652
tammy@madisonprops.com
<https://www.tammydrozdahomes.com>



Scan code
 for more
 property
 details



30608 Hood Road, Conifer, CO 80433 — Lower Level



TOTAL: 1462 sq. ft
1st floor: 699 sq. ft, 2nd floor: 763 sq. ft
EXCLUDED AREAS: SHED: 68 sq. ft, PORCH: 15 sq. ft, DECK: 154 sq. ft,
WALLS: 125 sq. ft

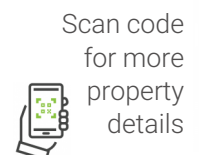
Floor Plan Created By V1photos.com, Measurements Deamed Highly Reliable But Not Guaranteed.



Disclaimer: Sizes and Dimensions are Approximate, Actual May Vary.

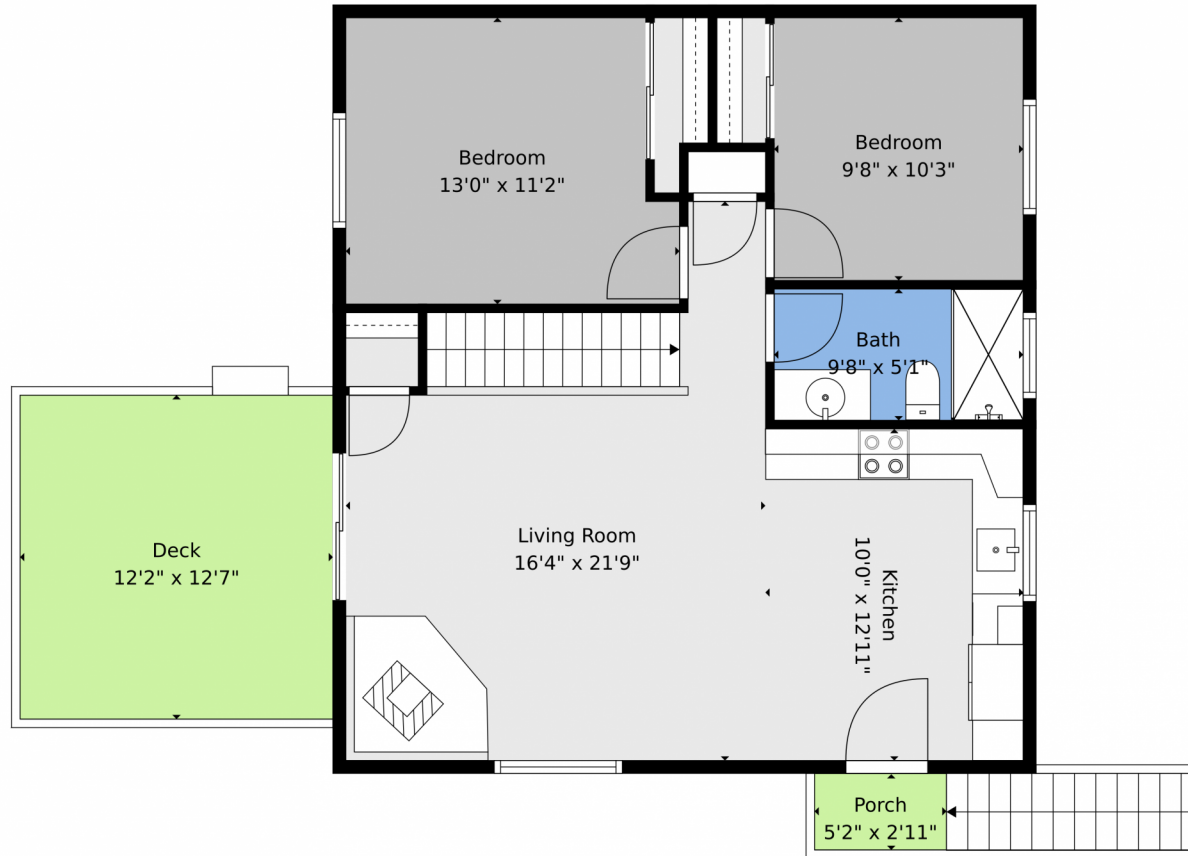


Tammy Drozda
720-308-1652
tammy@madisonprops.com
<https://www.tammydrozdahomes.com>



Scan code
for more
property
details





TOTAL: 1462 sq. ft
1st floor: 699 sq. ft, 2nd floor: 763 sq. ft
EXCLUDED AREAS: SHED: 68 sq. ft, PORCH: 15 sq. ft, DECK: 154 sq. ft,
WALLS: 125 sq. ft

Floor Plan Created By V1photos.com, Measurements Deamed Highly Reliable But Not Guaranteed.



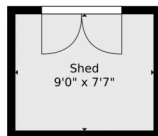
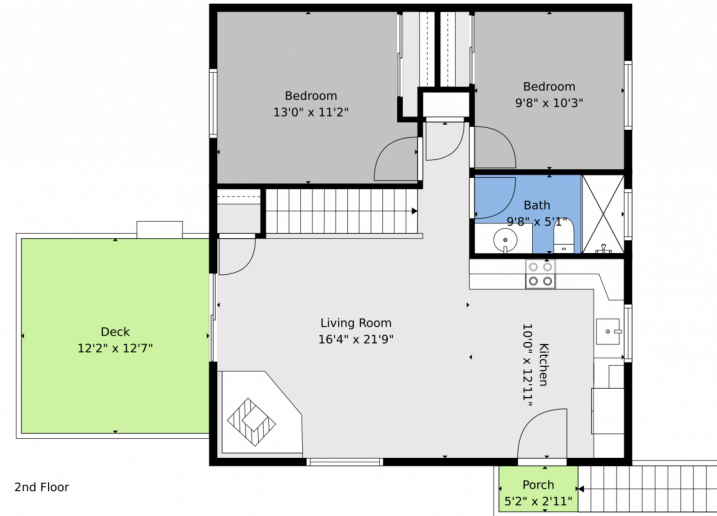
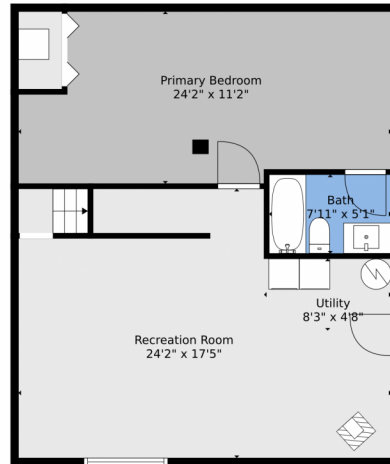
Disclaimer: Sizes and Dimensions are Approximate, Actual May Vary.



Tammy Drozda
720-308-1652
tammy@madisonprops.com
<https://www.tammydrozdahomes.com>



30608 Hood Road, Conifer, CO 80433 — All Levels



1st Floor

2nd Floor

TOTAL: 1462 sq. ft
 1st floor: 699 sq. ft, 2nd floor: 763 sq. ft
 EXCLUDED AREAS: SHED: 68 sq. ft, PORCH: 15 sq. ft, DECK: 154 sq. ft,
 WALLS: 125 sq. ft

Floor Plan Created By V1photos.com. Measurements Deamed Highly Reliable But Not Guaranteed.



Disclaimer: Sizes and Dimensions are Approximate, Actual May Vary.



Tammy Drozda
 720-308-1652
 tammy@madisonprops.com
<https://www.tammydrozdahomes.com>



Scan code
for more
property
details

