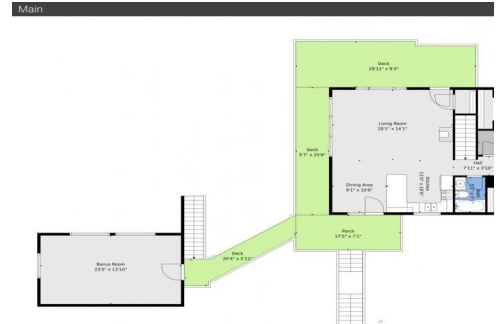


638 Impala Trail
Bailey, CO 80421
COMMUNITY: Burland Ranchettes

MLS # 8823708
PRICE \$600

Private Mountain Retreat with Studio Space & Wildlife Views



Single Family



1580 SQFT



2 Beds



2 Baths



4 Car



2.28 Acre

PROPERTY DETAILS

Tucked into 2.28 acres of towering pine and shimmering aspen, this mountain retreat offers the kind of privacy that's hard to find and even harder to leave. Surrounded by nature, the property feels like your own peaceful sanctuary, where wildlife sightings are part of everyday life and the only soundtrack is the breeze moving through the trees. The home offers 1,580 square feet of finished living space with two bedrooms and two bathrooms. The main level features an open layout where the kitchen, dining, and living areas flow together seamlessly. Large windows frame forest views and fill the space with natural light, while easy access to expansive deck areas makes indoor outdoor living effortless. Whether it's morning coffee among the aspens or dinner under the stars, the setting delivers privacy in every season. The lower level provides a spacious and versatile great room ideal for a second living area, media space, office, hobby room, or future bedroom, along with an additional bath. It's a flexible layout designed to grow with your needs. Outdoor living truly shines here. Multiple deck and patio



Christy Seabourne
720-441-2544
admin@peacefulcoloradohomes.com



Scan code
for more
property
details



spaces create private pockets for entertaining, relaxing, or simply watching wildlife wander through the trees. The beautiful lot blends mature pine with abundant aspen, offering year round greenery and stunning bursts of gold in the fall. Car enthusiasts, hobbyists, and creatives will appreciate the generous parking with both attached and detached garages. The detached garage also includes approximately 320 square feet of finished space above, perfect for a studio, workshop, creative retreat, guest overflow, or private office. With ample parking and room to spread out, this property combines functionality, flexibility, and exceptional privacy in a truly special mountain setting.



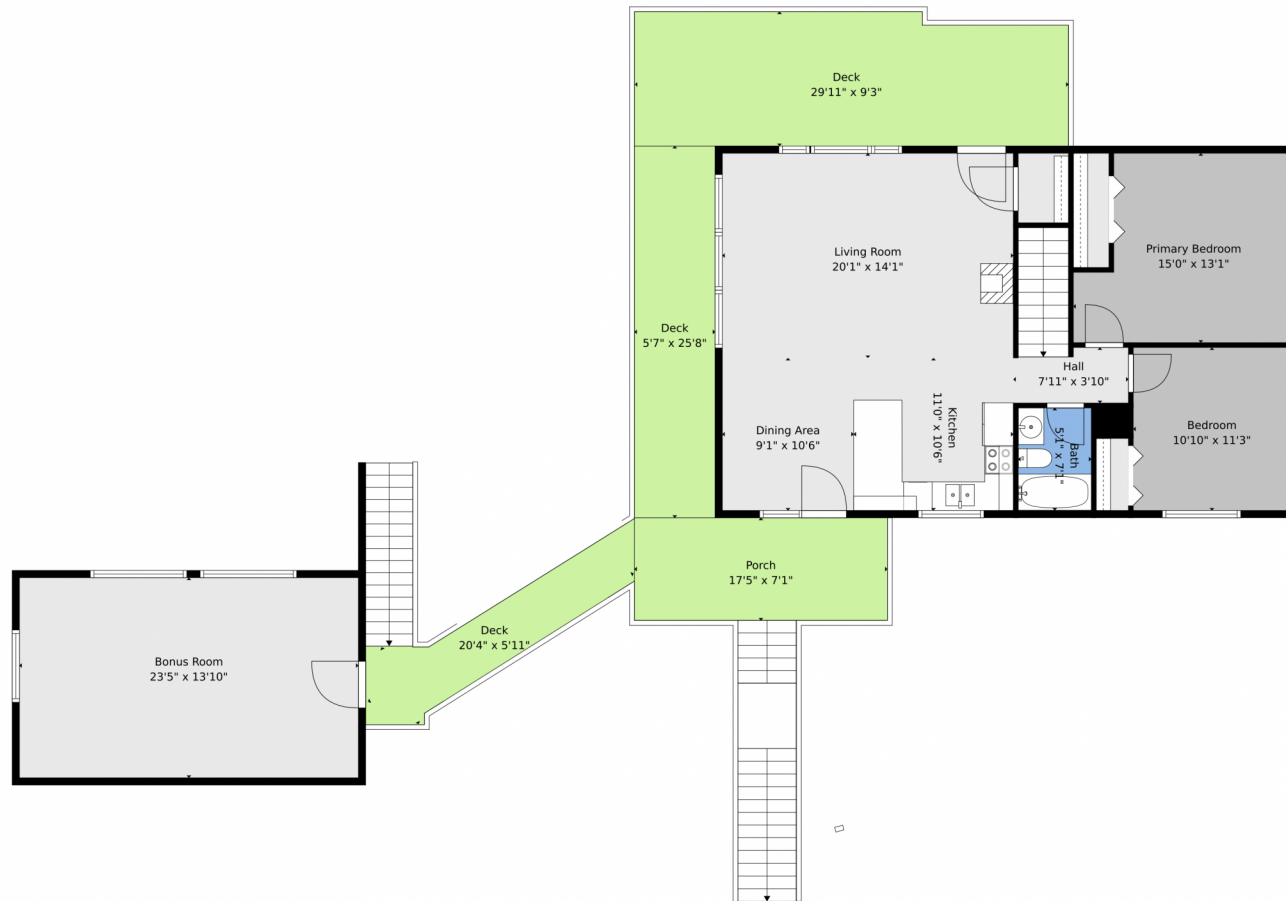
Christy Seabourne
720-441-2544
admin@peacefulcoloradohomes.com



Scan code
for more
property
details



638 Impala Trail, Bailey, CO 80421 — Main



Floor Plan Created By V1photos.com, Measurements Deamed Highly Reliable, But Not Guaranteed.



Disclaimer: Sizes and Dimensions are Approximate, Actual May Vary.



Christy Seabourne
720-441-2544
admin@peacefulcoloradohomes.com



638 Impala Trail, Bailey, CO 80421 — Lower Level



Floor Plan Created By V1photos.com, Measurements Deamed Highly Reliable, But Not Guaranteed.



Disclaimer: Sizes and Dimensions are Approximate, Actual May Vary.



Christy Seabourne
720-441-2544
admin@peacefulcoloradohomes.com

